



MOSAIC
COMMUNITY LIFESTYLE
REALTY

BILTMORE PARK



42 SCHENCK PARKWAY, #106 | ASHEVILLE, NC 28803

42 SCHENCK PARKWAY, #106
ASHEVILLE, NC 28803



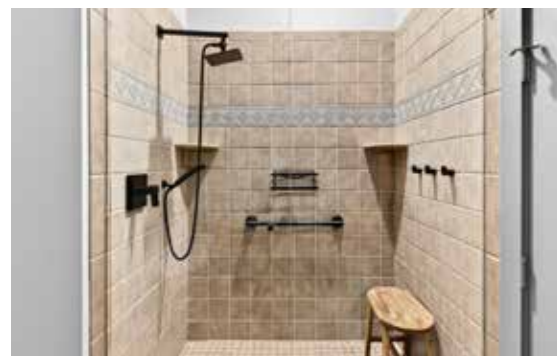
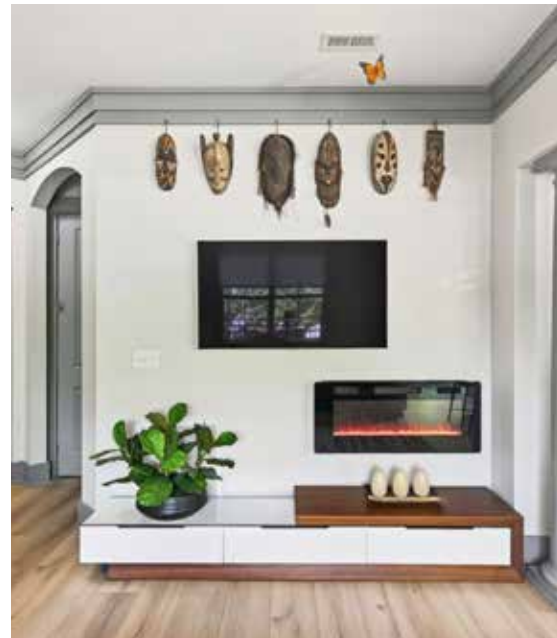
BILTMORE PARK



**ONE OF THE MOST DESIRABLE RESIDENCES
IN BILTMORE PARK TOWN SQUARE!**

This rare, light-filled corner unit condo offers an exceptional blend of luxury, comfort, and walkable convenience in the heart of South Asheville. Recently remodeled with high-end finishes throughout, this stunning home features 10-foot ceilings and abundant natural light, enhancing its open, airy feel. The thoughtfully updated kitchen showcases sleek quartz countertops, an induction range, custom cabinetry and drawers, and ample storage, seamlessly flowing into the living space—perfect for both everyday living and entertaining. An elegant electric fireplace adds warmth and a modern focal point. Every detail has been carefully curated to elevate the living experience, combining style with functionality in a way that's both refined and inviting. Residents enjoy access to an impressive array of community amenities, including a sparkling pool with a grilling area, a 24-hour fitness center, and a lively game room. Step outside and explore miles of scenic walking trails, or take full advantage of the vibrant Town Square lifestyle—just steps from your door. Enjoy coffee and a good book, catch a movie, dine at local restaurants, or browse popular shops, all within easy walking distance. With its rare corner location, upscale finishes, and unbeatable access to one of Asheville's most dynamic communities, this condo is truly a standout opportunity. Includes assigned parking and storage unit.

2 BEDROOMS | 2 BATHROOMS | 1,239 SF | CONDO



LEANN BOUND
828-713-2316
LEANN@MYMOSAICREALTY.COM

42 SCHENCK PARKWAY, #106

ASHEVILLE, NC 28803



42 SCHENCK PARKWAY, #106 | ASHEVILLE, NC 28803

2 BEDROOMS | 2 BATHROOMS | 1,239 SF | CONDO

FEATURES

- Rare east-facing corner unit
- Freshly remodeled with a new kitchen, bathroom, flooring, fixtures and painting
- Luxury LPV flooring throughout
- 10-foot ceilings
- Both bedrooms have ensuite bathrooms
- Multiple closets
- Storage unit S2
- Assigned parking
- Kitchen:
 - » Stainless steel induction range
 - » SS microwave drawer
 - » SS retractable range hood vents outside
 - » SS French door refrigerator
 - » Custom modern cabinets, kitchen drawers
 - » Custom space-saving storage cabinets
 - » Quartz countertops
 - » Matte-finished quartz eat-in kitchen island
- High-end dining room chandelier
- East-facing porch for cooler afternoons
- Retractable awning for shade and privacy

BILTMORE PARK TOWN SQUARE AMENITIES

- Private, gated pool
- Club room
- Fitness center
- Street lights
- Sidewalks
- Biltmore Park walking trails

BILTMORE PARK TOWN SQUARE SHOPS

- Barnes & Noble bookstore
- YMCA
- REI
- Regal Biltmore Grande
- Athleta
- Lululemon
- Luella's BBQ
- Nine Mile
- Cheveux Salon
- Tons more! Check it out at <https://biltmorepark.com/>

DRIVING DIRECTIONS

FROM DOWNTOWN ASHEVILLE: Take I-240 W to I-26 E. Take the Long Shoals Road exit. Turn LEFT off the exit and LEFT onto Schenck Parkway. Go past REI and straight through the traffic circle. It is the last building on the left. Use the front entrance.



42 SCHENCK PARKWAY, #106 | ASHEVILLE, NC 28803

2 BEDROOMS | 2 BATHROOMS | 1,239 SF | CONDO

FLOOR PLAN

