



196 ROCKHOLD DRIVE

Serene Mountain Home in Town Mountain Estates



MOSAIC
COMMUNITY LIFESTYLE REALTY

3 Bedrooms, 2.5 Bathrooms
1,826 SF • 0.91-Acre Lot



196 ROCKHOLD DRIVE ASHEVILLE, NC 28804

3 Bedrooms, 2.5 Bathrooms
1,826 SF (Main & upper levels are each 913 SF)
0.91-Acre Lot

FEATURES

Private, serene, 1.5-story contemporary home in Town Mountain Estates with **peekaboo mountain views** that can be opened up with minor clearing

Just **minutes to downtown** Asheville

Peaceful mountain retreat with an **open floor plan** and **gorgeous mature landscaping**

Currently operating as the "Town Mountain Breeze" **vacation rental** with Yonder Luxury Vacation Rentals

Located outside city limits (no city taxes)

A cathedral ceiling and a **custom-designed gas fireplace** are highlights of the completely remodeled living room (2020)

Large, main-level laundry room with a utility sink and extra storage

Spacious half bathroom on main level



Updated kitchen (2023):

- Beautiful **quartz countertops**
- **Wood cabinetry** with soft-close drawers and a lazy susan
- **Spacious pantry**
- **Large island/breakfast bar**
- **Sleek GE appliances** with electric oven

Upper-level primary suite has a walk-in closet and a bathroom with a tub/shower combo

Attached two-car garage with extra storage

Hardwood floors throughout

Light neutral paint palette

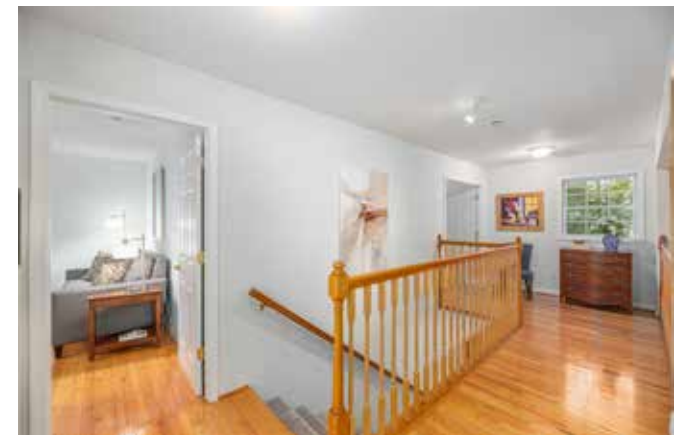
Lots of storage

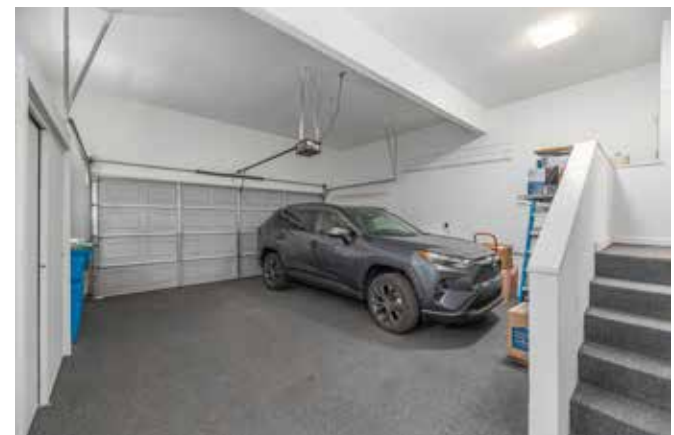
Recessed lighting and ceiling fans throughout

Electric hot water heater (2023)

Internet/wi-fi: Spectrum









MOSAIC
COMMUNITY LIFESTYLE REALTY

46 Orchard Street, Suite 100, Asheville, NC 28801
WWW.MYMOAICREALTY.COM





Immaculately cared for and filled with an abundance of sunlight, this private and gorgeously manicured contemporary mountain retreat offers the perfect blend of serenity and convenience—just a ten-minute drive to downtown Asheville. Situated on a Town Mountain lot of almost an acre, let your worries drift away as you relax in your sunroom, surrounded by the beauty of nature and mature landscaping. From many spots around the property, you'll enjoy peekaboo mountain views as well (which can be opened up even more with minor selective clearing).

This home features beautiful hardwood floors throughout the main level, a custom-designed gas fireplace in the living room (2020), plus three bedrooms and two full bathrooms on the upper level, including a spacious primary suite and a two-car attached garage on the main level.

Designed to bring the outdoors in and connect with the beauty of the Blue Ridge Mountains, the home showcases a dramatic wall of windows and patio doors, offering peaceful wooded views and creating a seamless connection to nature. Expansive decks, a large screened-in porch, and a gorgeous brick and stone patio provide ideal spaces for relaxing or entertaining year-round.

Located outside city limits (no city taxes!) near the Blue Ridge Parkway, but less than three miles to downtown Asheville, this home offers easy access to restaurants, grocery stores, local attractions, plus music, hiking, biking, golf, and endless outdoor adventures—making it perfect as a full-time residence, a luxurious mountain getaway, and/or continuing as the “Town Mountain Breeze” vacation rental.



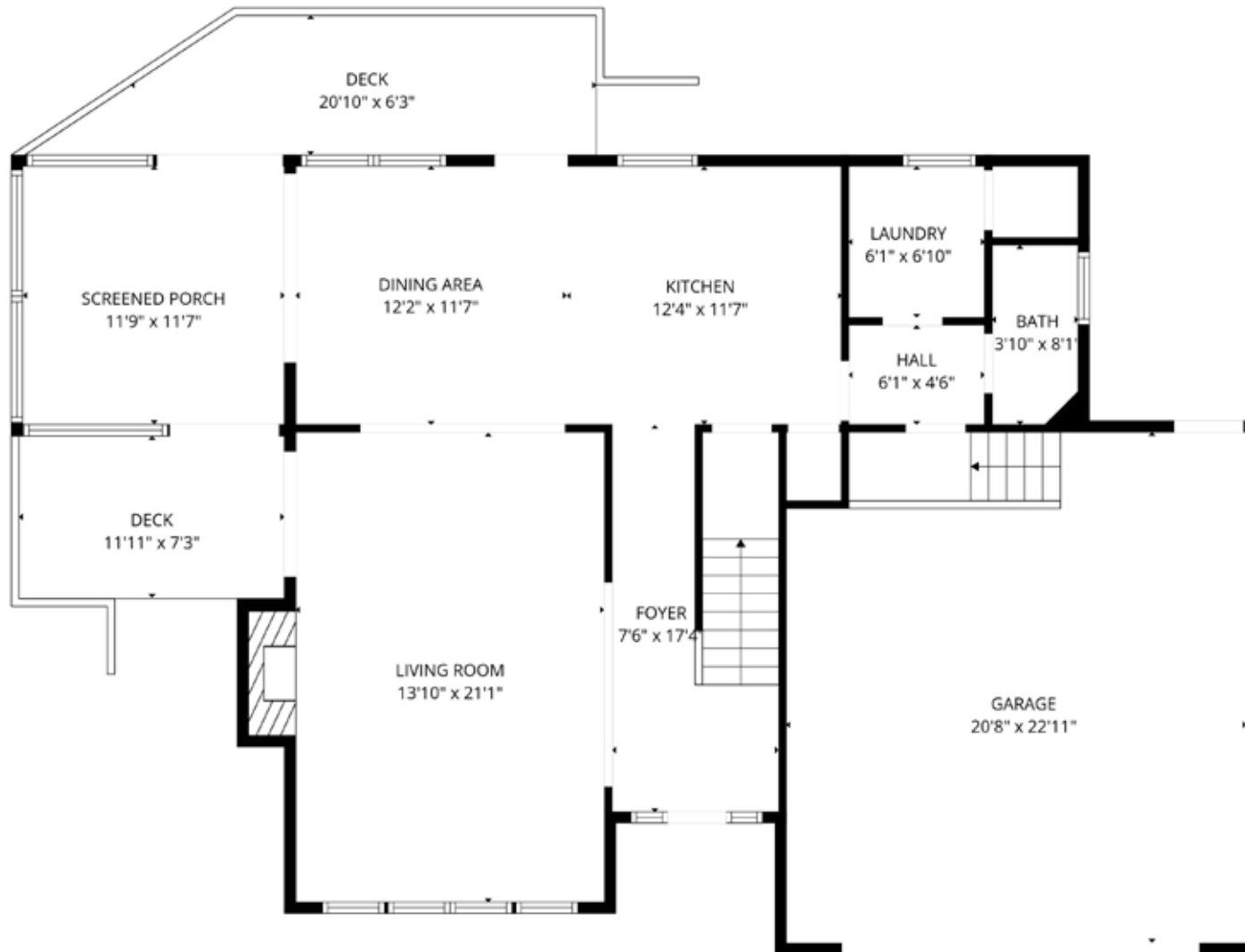
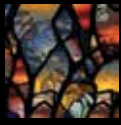
For more information, please contact:

LAURA MOYE
828-301-4518

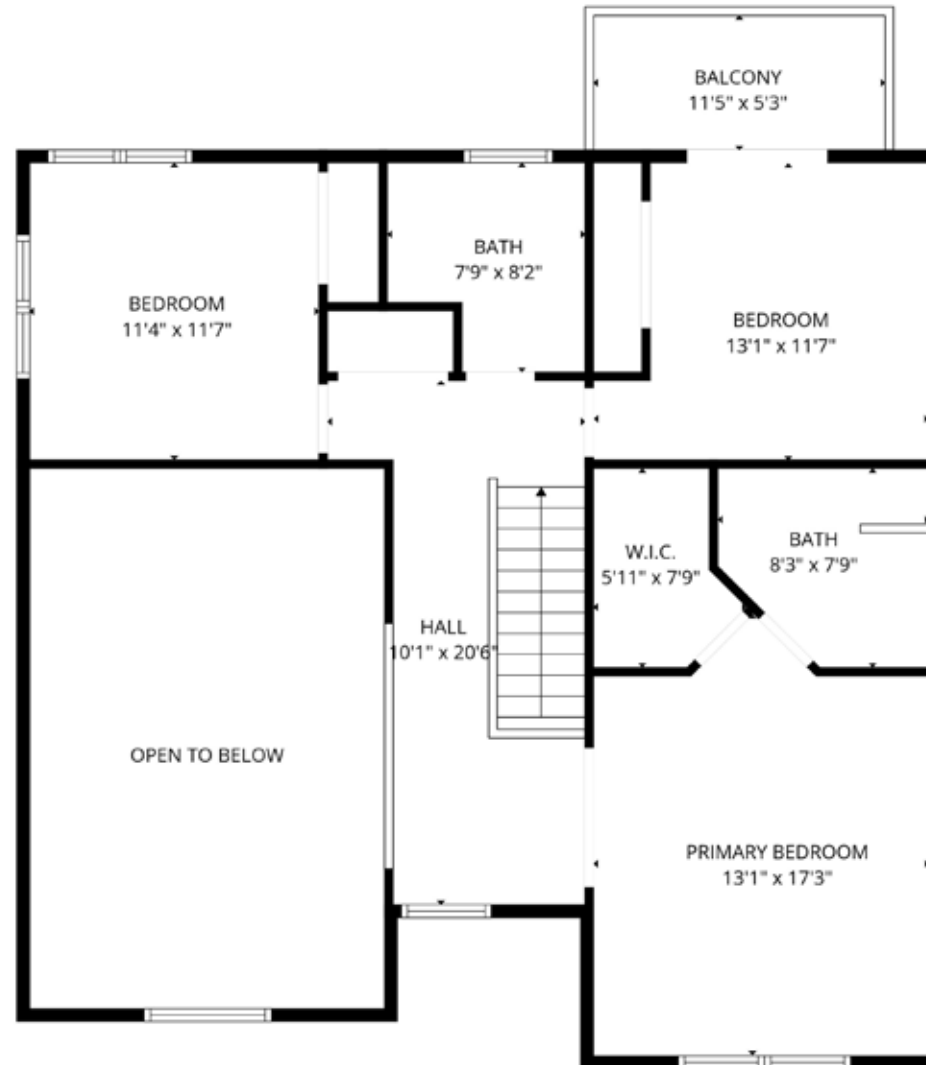
LAURA@MYMOSAICREALTY.COM

DRIVING DIRECTIONS FROM DOWNTOWN ASHEVILLE

Follow I-40/ I-240 E to US-70 E/Charlotte St. Take exit 5B and go 9.3 miles, then head straight on I-40 E for 3.7 miles. Use the left lane to keep left at the fork. Stay on I-40 E and follow signs for I-26 W/I-240 E/Asheville/Johnson City/I-40 E/Hickory/Biltmore Estate for 0.2 mile. Then use the left lane to take exit 46B and merge onto I-240 E/I-26 W toward Asheville for 3.1 miles. Continue straight onto I-240 E for 0.9 mile, then keep left to stay on I-240 E for 1.2 then take exit 5B for Charlotte Street/US 70 E toward US 74 Alternate/NC-694 for .2 miles then follow NC-694 N/Town Mountain Rd to Rockhold Dr in Asheville for 3.4 miles then turn right onto US-70 E/Charlotte St for .1 mile then turn left onto College St for .1 mile then turn left onto NC-694 N/Town Mountain Rd for 3.1 miles then turn left onto Rockhold Dr for 190 ft and your destination will be on the left



MAIN LEVEL



UPPER LEVEL