



 VIRTUAL TOUR

## 8 RHODODENDRON PLACE

Meticulously Maintained Home in Haw Creek



**MOSAIC**  
COMMUNITY LIFESTYLE REALTY

3 Bedrooms, 2 Bathrooms  
1,742 SF • 0.32 Acre  
MLS #4147344



## INFO

8 Rhododendron Place  
Asheville, NC 28805  
3 Bedrooms, 2 Bathrooms  
1,742 SF • 0.32 Acre  
MLS #4147344

## FEATURES

- Minutes to downtown Asheville, Blue Ridge Parkway trails, WNC Nature Center, East Asheville Public Library, and everyday amenities, including Whole Foods, Target, and the Asheville Mall
- Meticulously maintained home; only two owners since it was built in 1984
- Beautiful gardener's paradise with perennials only, providing a gorgeous property with ease of maintenance
- One-level living with ADA-compliant features: wide doorways and walk-in primary shower; zero-step entry from front door and garage
- East Asheville's popular Haw Creek neighborhood is ideal for long walks
- Stunning kitchen, ideal for those who love to cook and host their friends
  - › Incredible amount of quartz countertops — tons of space for prepping and hosting
  - › Abundance of beautiful maple cabinetry and drawers
  - › Stainless steel appliances include an electric cooktop and built-in oven and microwave
  - › Lovely coffee bar with extra sink and shelving
  - › Skylights and deck door provide extra light
- Wood-burning stove with live-edge mantel in sitting and dining area of open kitchen is regularly serviced; wood storage outside (off the deck)



Incredibly Relaxing Screened-in Porch

- Primary suite features double closets and well-kept carpet
- Primary bath includes ADA-compliant walk-in shower and laundry
- Second bedroom Murphy bed to convey with the sale; would make the ideal home office or guest bedroom
- Incredible outside spaces include a relaxing, screened-in porch plus an open back deck with swing
- Pollinator-friendly native plants bloom from spring until late autumn
- Low-maintenance brick exterior
- Custom community library box in front garden space
- Tandem garage fits two vehicles — provides plenty of storage if needed
- AC Reynolds School District — Evergreen Charter School and Haw Creek Elementary are nearby within the neighborhood



One-Level Living



Meticulously Maintained and Move-in Ready



Beautiful Hardwood Floors



Wood-Burning Stove Has Been Regularly Serviced



Lovely Coffee Bar and Extra Sink



Perfect Space for Hosting Dinner Parties



Skylights Provide More Light • 2016 Roof



Stunning Kitchen Remodel



Quartz Countertops and Electric Cooktop



Incredible Cook's Kitchen



Maple Cabinets and Stainless Steel Appliances



Primary Suite - See Floor Plan



Ample Closet Space



Laundry Included in the Primary Suite Bathroom



ADA Compliant Features throughout Home



Three Bedrooms • Two Full Baths

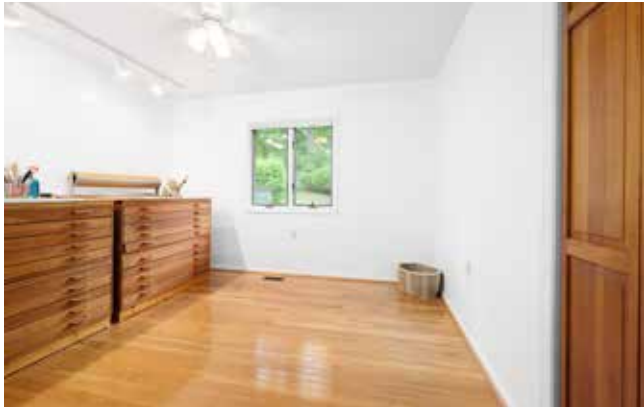


Murphy Bed Conveys

## 8 RHODODENDRON PLACE

Meticulously Maintained Home in Haw Creek

Asheville, NC 28805



Third Bedroom • Currently Used as Art Room



Beautifully Updated Hall Bathroom



Open Deck Overlooks the Level Backyard



Porch Swing to Convey



Enjoy Dinner outside Most Months of the Year



Host Neighbors around the Fire



Firewood Storage Is Just off the Deck



Helpful Garden Shed



Lovely Yard for Pets and Play



Ideal Neighborhood for Hiking, Walking



Welcome Home!



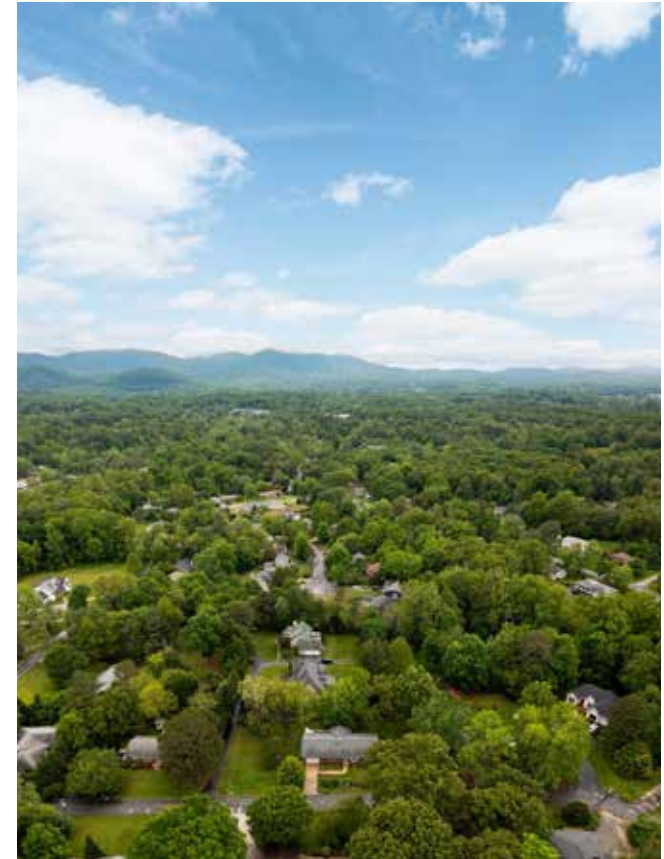
Perennial Gardens for Ease



Garden Blooms in the Spring through Late Autumn



Neighborhood Library Box



East Asheville's Convenient and Beautiful Haw Creek



Gardener's Paradise



Walk to Blue Ridge Parkway Trails from Your New Home



Minutes to Downtown Asheville and Everyday Amenities

## 8 RHODODENDRON PLACE

Beautiful and peaceful home in East Asheville's sought-after Haw Creek neighborhood. Just minutes to downtown Asheville, Blue Ridge Parkway trails, WNC Nature Center, Whole Foods, and other everyday amenities. This meticulously maintained home features a stunning kitchen remodel, spacious back deck and screened-in porch, and fabulous perennial gardens throughout the property. Perfect home for aging in place, or just for enjoying one-level living with a zero-stair entry. Tandem garage is ideal for two vehicles and storage, along with outdoor garden shed. This is your chance to be its third-ever owner and enjoy all that this location and home have to offer.



For more information, please contact:

**MEGAN SHOOK**

**828.450.6797**

**MEGAN@MYMOSAICREALTY.COM**

### DIRECTIONS

FROM ASHEVILLE: Take Tunnel Rd east. Turn left on Crockett Ave (light). Turn right on New Haw Creek. Turn left on Trinity Chapel. Turn right on Old Haw Creek. Turn left on Rhododendron Place. Home will be on your left.

