



## 20 PICKENS LANE

Gardener's Paradise in the Heart of Weaverville



**MOSAIC**  
COMMUNITY LIFESTYLE REALTY

**3 Bedrooms, 2 Bathrooms + Office**  
1,963 SF • 5 Acres  
MLS #4267121



**20 PICKENS LANE  
WEAVERVILLE, NC 28787**

3 Bedrooms, 2 Bathrooms + Office  
1,963 SF · 5 Acres  
MLS #4267121

**FEATURES**

- Solar panels for reduced utility costs and sustainable living
- Honeycomb passive heat/cooling insulation in the sunroom
- Expansive wraparound porch with 828 SF, partially screened
- Enclosed wraparound sunroom (380 SF), ideal for year-round enjoyment
- Artist studio “shed” with electricity—perfect for a creative workspace
- Separate potter’s/gardener’s shed for hobbies or tool storage
- Open-concept dining and kitchen area for seamless entertaining
- Cozy wood-burning stove for ambiance and warmth
- Multiple fruit trees and bushes for homegrown produce
- Raised garden beds for vegetables, herbs, or flowers
- Situated on five acres near the center of Weaverville—a rare combination of space and convenience
- Fresh water spring on property—an added natural resource





**MOSAIC**  
COMMUNITY LIFESTYLE REALTY

46 Orchard Street, Suite 100, Asheville, NC 28801  
[WWW.MYMOSAICREALTY.COM](http://WWW.MYMOSAICREALTY.COM)





**20 PICKENS LANE**  
Gardener's Paradise in the Heart of Weaverville  
Weaverville, NC 28787



**MOSAIC**  
COMMUNITY LIFESTYLE REALTY

46 Orchard Street, Suite 100, Asheville, NC 28801  
[WWW.MYMOSAICREALTY.COM](http://WWW.MYMOSAICREALTY.COM)



**20 PICKENS LANE**  
Gardener's Paradise in the Heart of Weaverville  
Weaverville, NC 28787



**MOSAIC**  
COMMUNITY LIFESTYLE REALTY

46 Orchard Street, Suite 100, Asheville, NC 28801  
[WWW.MYMOSAICREALTY.COM](http://WWW.MYMOSAICREALTY.COM)







Gardener's paradise in the heart of Weaverville! This whimsical 3BR/2BA farmhouse with an office sits on five private, gently rolling acres just minutes from downtown. Originally built in 1865 and lovingly updated, it's filled with historic charm and character. A spacious wraparound porch overlooks vibrant garden beds with oriental poppies, fruit trees, and more. Enjoy the screened-in entry porch with views of the mandala garden, and a colorfully painted shed with power—ideal for an artist or potter's studio. A curved sunroom (not included in square footage) offers a cozy spot for morning coffee or afternoon tea. The woodstove in the main living area adds warmth and comfort during cooler months. This hidden sanctuary offers a rare blend of privacy, personality, and potential in a sought-after location.



For more information, please contact:

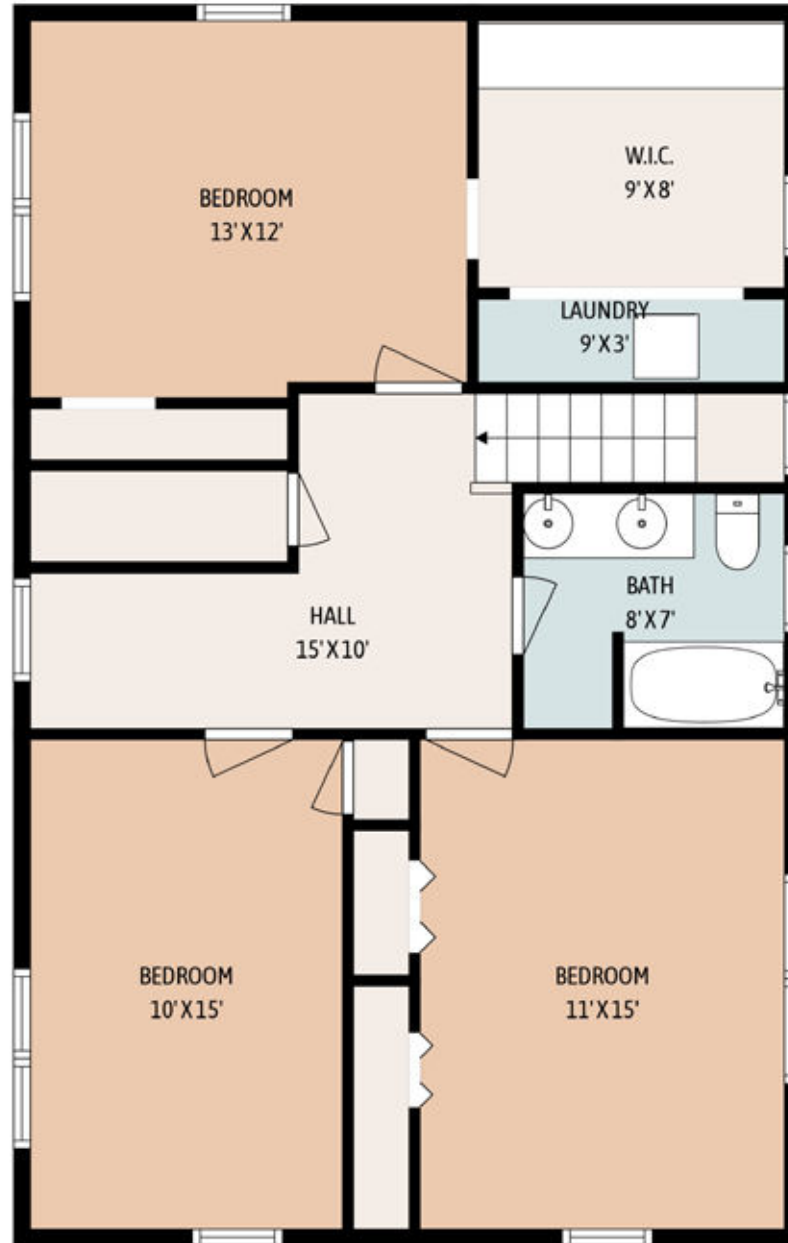
**ANTHONY GUTHMILLER**  
**828-333-8312**  
[ANTHONYG@MYMOSAICREALTY.COM](mailto:ANTHONYG@MYMOSAICREALTY.COM)

#### DIRECTIONS

FROM HAYWOOD ROAD IN WEST ASHEVILLE: Turn onto Walmboldt Avenue. Home is the first on the left, just past Hole Doughnuts.



**MAIN LEVEL**



UPPER LEVEL