



130 ONTEORA BOULEVARD

Quintessential Ranch Home in Lovely Oakley Neighborhood



MOSAIC
COMMUNITY LIFESTYLE REALTY

3 Bedrooms, 1.5 Bathrooms
1,222 SF • 0.47 Acre
MLS #4077305

INFO

130 Onteora Boulevard
Asheville, NC 28803
3 Bedrooms, 1.5 Bathrooms
1,222 SF • 0.47 Acre
MLS #4077305

FEATURES

- 1950 ranch on level, 0.47-acre lot
- Hardwood floors in many rooms
- Minutes to Highland Brewing, Whole Foods, Biltmore Village and downtown Asheville
- Newer kitchen with quartz countertops and ¾-sized dishwasher
- Step-in pantry off kitchen
- Dual closets in primary bedroom
- Knotty pine paneling
- Possible to move laundry and make the half bathroom into another full bathroom (buyer to confirm)
- Sidewalks being installed across the street
- Large carport and tons of parking
- Two sheds: one for garden tools, one for a kegerator or ??
- Great backyard with flagstone patio and firepit



Sunny Front Deck, Perfect for Relaxing



Bonus Room in Basement with Built-in Closet and Desk



DIGITALLY STAGED



Large Picture Window Brings Natural Light into the Home



Spacious Living Room with Gleaming Hardwood Floors



Lots of Space for Entertaining



Extra Storage Closet at One End of the Hall



Kitchen Features Cabinets with Crown Molding



Ample Counter Space and a Pantry



Pantry with Built-in Organization



Granite Counters and a Double-Basin Sink



Plenty of Room for a Breakfast Nook



Bedroom with Crown Molding



Closet in Main-Level Bedroom



Second Bedroom Has Gleaming Hardwood Floors



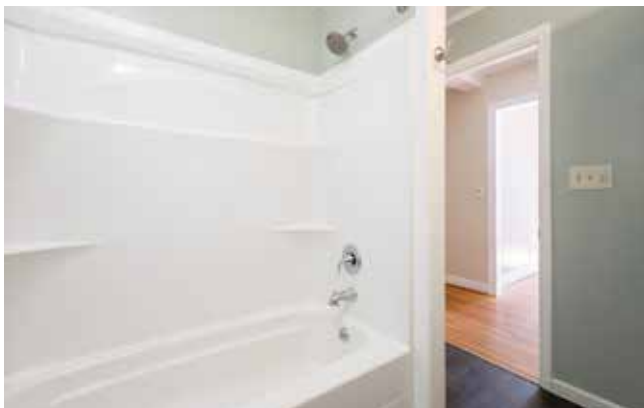
Third Bedroom with Cozy Carpet



Two Closets for Lots of Storage



Full Bathroom with Built-in Linen Cabinets



Shower + Tub



Granite-Topped Vanity



Laundry Room and Half Bath



Spacious Yard Invites Outdoor Activities



Open Space for a Chilly-Evening Fire Pit Session



Secure Shed for Tool + Toy Storage



Extra Dry Storage



Larger Shed with Many Possibilities



Great Space for Workshop or Studio



Stacked Stone Wall and Steps



Two-Car Carport and Plenty of Parking

130 ONTEORA BLVD

Quintessential Ranch Home in Oakley

Asheville, NC 28803



Large Yard for Play

130 ONTEORA BOULEVARD

Super-cute rancher on a very level lot, with tons of outdoor space and storage sheds. Minutes to downtown, Biltmore Village, Highland Brewing, and the Asheville Mall area. Hardwood floors in many rooms. Large windows and lots of light throughout. Around back, there's a flagstone patio with a fire pit on a large, level backyard. Sidewalks are being installed across the street to make Oakley even more walkable!



For more information, please contact:

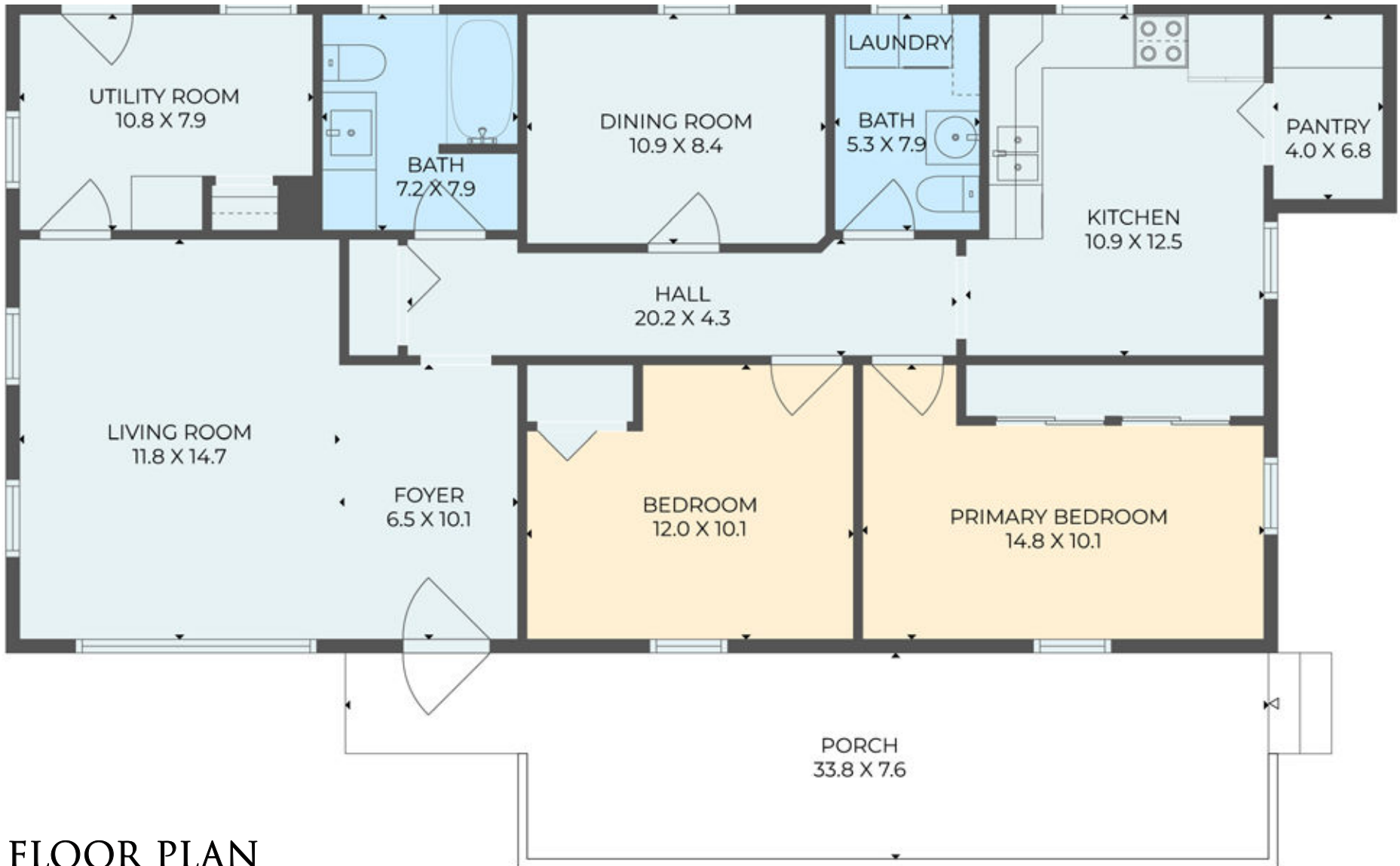
BILL ANDERSON

828.974.1519

BANDERSON@MYMOSAICREALTY.COM

DIRECTIONS

FROM DOWNTOWN: Take I-240 E/US-70 E to Fairview Road. Take exit 8 from I-240 E and follow Fairview Road for about half a mile, then turn left onto School road, then left again onto Onteora Boulevard. Home will be on the left.



FLOOR PLAN