



808 MOUNTAIN COVE ROAD

Custom Modern on 6.89 Private Acres | Hendersonville



MOSAIC
COMMUNITY LIFESTYLE REALTY

2 Bedrooms, 2 Bathrooms
1,126 SF • 6.89 Acres



**808 MOUNTAIN COVE ROAD
HENDERSONVILLE, NC 28792**

2 Bedrooms, 2 Bathrooms
1,126 SF · 6.89 Acres

FEATURES

Borders Henderson and Buncombe Counties—one tract (5.98 acres) in Buncombe and one tract (0.91 acre) in Henderson

Modern-built home; ability to build more structures on property

Large windows throughout

12' vaulted ceilings

Stunning natural light

Luxurious, **spa-like bathrooms**

Primary bath includes dual sinks and **large soaking tub**

Cozy up to the **gas logs/fireplace** in the living room

Gas range in kitchen

Concrete floors throughout

Open floor plan with **all square footage above grade**

Large windows and sliding doors bring the sights and sounds of the **forest and creek** inside

Whole-house generator and **buried utility lines**, including fiber internet

Hot tub, fire pit, and large, covered wraparound decks

Walking/hiking trails on property **along the creek**

Stunning rhododendron and mature hardwoods throughout the property

Creek with waterfalls and cold-plunge pools

Private, flat drive into property

Mountain community of 10 homes with **road maintenance agreement** in place

Private septic and well







MOSAIC
COMMUNITY LIFESTYLE REALTY

46 Orchard Street, Suite 100, Asheville, NC 28801
WWW.MYMOSAICREALTY.COM





MOSAIC
COMMUNITY LIFESTYLE REALTY

46 Orchard Street, Suite 100, Asheville, NC 28801
WWW.MYMOSAICREALTY.COM



808 MOUNTAIN COVE ROAD

Custom Modern on 6.89 Private Acres

Hendersonville, NC 28792



MOSAIC
COMMUNITY LIFESTYLE REALTY

46 Orchard Street, Suite 100, Asheville, NC 28801
WWW.MYMOAICREALTY.COM





Nestled between Asheville and Hendersonville, this modern 2BD/2BA custom home sits on 6.89 private acres of rhododendron forest and mature hardwoods. With thoughtful design and construction, the consistent attention to detail and craftsmanship carry throughout the home. Large picture windows and sliding doors invite the forest and creek to blend seamlessly into the interior. While spacious bedrooms and luxurious bathrooms anchor each side, creating a true sanctuary. Unwind in the spa-like primary bath, equipped with a walk-in shower and large soaking tub, where open windows allow you to relax to the sounds of the adjacent creek. Bathed in natural light, you will enjoy an open floor plan with 12' vaulted ceilings, cozy fireplace, and energy-efficient passive solar design. The well-appointed kitchen includes a gas range, spacious cabinets, and plenty of countertop space. An abundance of outdoor living with covered wraparound decks, walking/hiking paths, fire pit, and a creekside hot tub. Hike through rhododendron forests and creekside trails to waterfalls and cold-plunge pools. Build your dream home on the flat acreage leading to the cabin or add an additional rental income-producing unit while still having plenty of privacy.

This unique modern home holds all the elements for a stunning primary residence, a spectacular mountain getaway, and/or a successful vacation rental. Underground utilities, fiber optic internet, and generator are in place. Well-maintained private roads anchor the access to this community of 10 mountain homes. 24 miles to Asheville, 7 miles to Chimney Rock, 8 miles to Lake Lure, 5 miles to Hickory Nut Gorge Trailhead, and 30 miles to Hendersonville. Sold fully furnished and turnkey. Currently a successful 5-star short-term vacation rental.

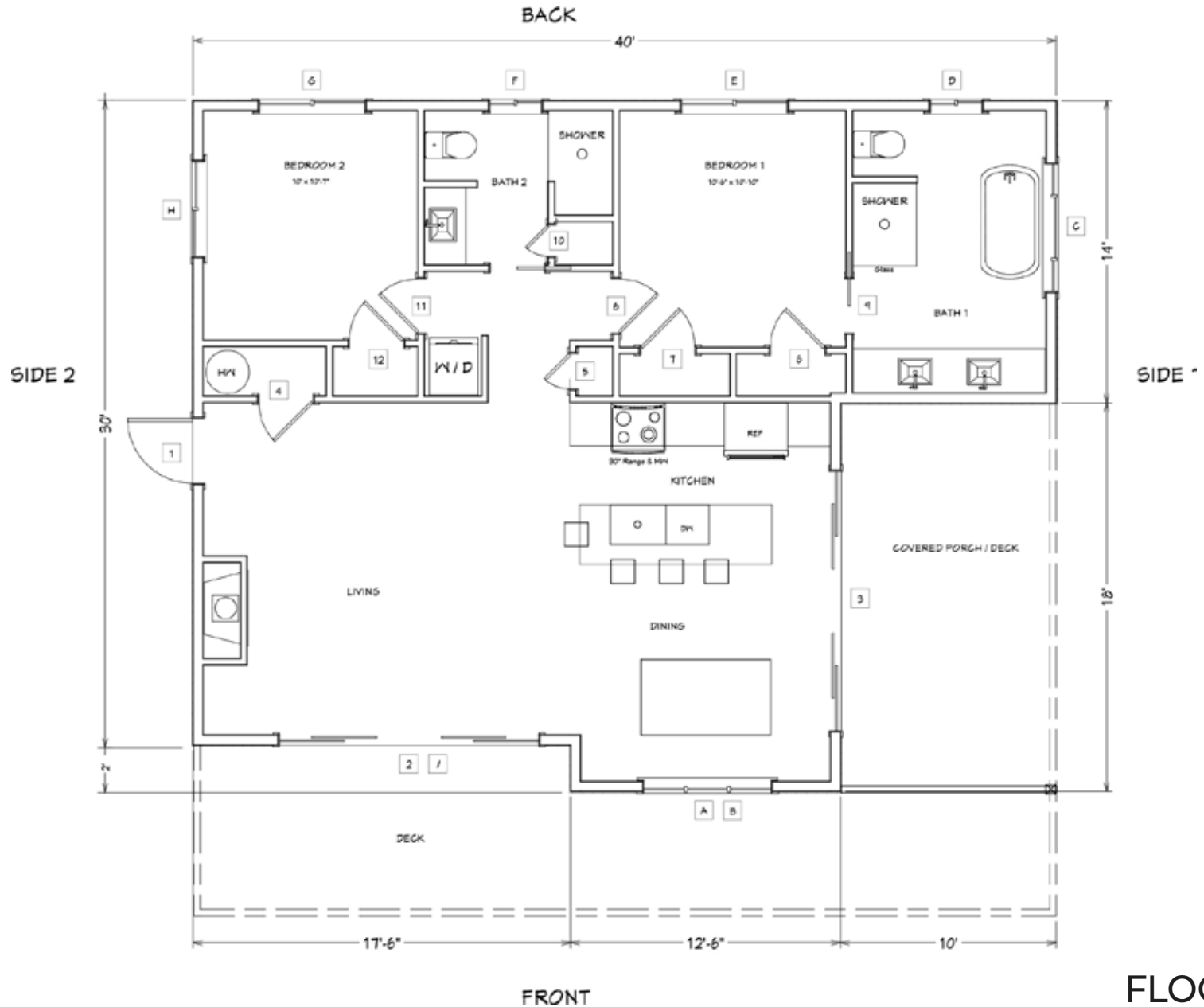


For more information, please contact:

STEPHANIE CALDWELL
828-231-6959
STEPH@MYMOSAICREALTY.COM

DIRECTIONS

FROM DOWNTOWN ASHEVILLE: Take I-240E to US-74E toward Fairview. Turn left on Middlefork Road and follow until the sharp left onto Mountain Cove Road. At the fork STAY LEFT (do NOT follow GPS onto Woodcliff for this last short section). 808 will be on your right. Take private, flat driveway to the home!



FLOOR PLAN