



## 30 MONROE PLACE

Classic Bungalow in the Heart of the Five Points Neighborhood



**MOSAIC**  
COMMUNITY LIFESTYLE REALTY

**3 Bedrooms, 1 Bathroom**  
**1,313 SF • 0.10 Acre**  
**MLS #4366107**



## 30 MONROE PLACE ASHEVILLE, NC 28801

3 Bedrooms, 1 Bathroom  
1,313 SF · 0.10 Acre  
MLS #4366107

### FEATURES

- Fantastic central location—just steps from downtown Asheville, Whole Foods and Trader Joe's groceries, the Reed Creek Greenway, UNCA, The Botanical Gardens of Asheville, and so much more ...
- Walk or bike to all of the locally owned restaurants, music venues, and shops that downtown Asheville has to offer
- Situated in the vibrant neighborhood of Five Points that includes numerous groceries and the popular Five Points Restaurant
- Home sits perched above Monroe Place, situated amongst other charming historic bungalows; greet neighbors and visitors from the spacious, covered front porch
- Inviting stone walls and landscaping in front beds are ready for new owner to continue gardening or make it their own
- Three bedrooms, one bath in this 1,313 SF home; open floor plan for the living, dining, and office spaces
- Plenty of natural light with its abundance of windows; built-in shelving separates the ideal office space from the living room
- Dining area includes the original charming fireplace (no longer functioning) and its beautiful tile surround and mantle
- Bathroom includes the original tub; plenty of storage with the medicine and nearby hallway closets (deep linen closet and spacious toiletry closet)

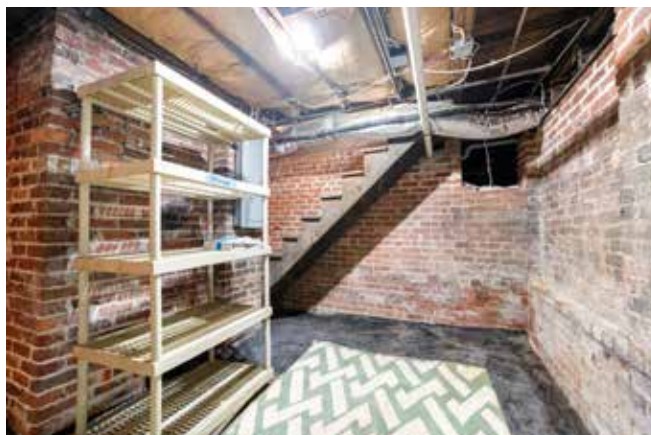


- Quaint kitchen is surprisingly efficient with its cabinetry layout; kitchen window looks out onto the vacant lot next door
- All appliances to convey, including the natural gas oven/range, built-in microwave, and stackable washer-dryer in back mudroom area (with its own exterior entrance)
- Backyard is fully fenced for your furry friends and features a lovely stone patio for your neighborhood gatherings or relaxing evenings
- Special surprise in the crawlspace below—automatic cellar door leads you down into an amazing storage space, plus the sellers' former second TV space/cave-like room
- Three off-street tandem parking spots in driveway
- 2024 architectural shingle roof
- Asheville City School district



**30 MONROE PLACE**  
Classic Bungalow in the Heart of Five Points  
Asheville, NC 28801





**30 MONROE PLACE**  
Classic Bungalow in the Heart of Five Points  
Asheville, NC 28801



**30 MONROE PLACE**  
Classic Bungalow in the Heart of Five Points  
Asheville, NC 28801



Located in the heart of Five Points neighborhood, this classic 3BR/1BA Asheville bungalow offers the perfect blend of charm and location, location, location! Just steps to downtown, UNCA, and the Reed Creek Greenway, this 1,313 SF home features an open living/dining/office layout, built-in shelving, and an abundance of windows for natural light. Enjoy a spacious, covered front porch, a fully fenced backyard with a stone patio, and an efficient, updated kitchen. Unique crawlspace with an automatic cellar door adds generous storage and bonus flex space (formally used as an extra TV space). Located blocks from local shops, groceries, and restaurants—this central bungalow offers the best of in-town living with historic charm.

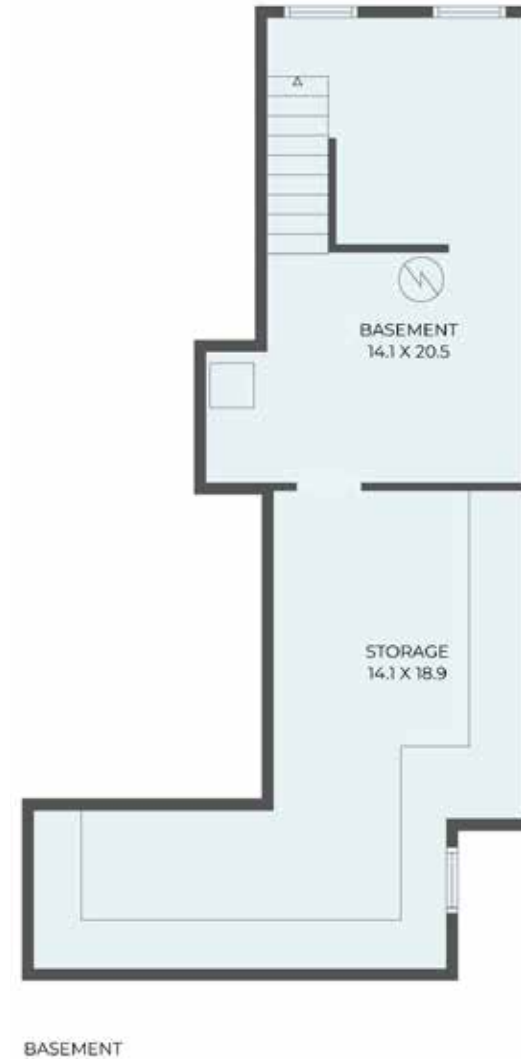


For more information, please contact:

**MEGAN SHOOK**  
**828-450-6797**  
[MEGAN@MYMOSAICREALTY.COM](mailto:MEGAN@MYMOSAICREALTY.COM)

#### DIRECTIONS

FROM DOWNTOWN ASHEVILLE: Take Broadway toward UNCA. Turn right on Monroe Place. Home will be on your left. There are three off-street tandem parking spots.



**FLOOR PLANS**