



412 MELNICK TERRACE

Thoughtfully Designed, Custom-Built Home in Keswick Hills



MOSAIC
COMMUNITY LIFESTYLE REALTY

3 Bedrooms, 2 Bathrooms
1,957 SF • 0.95 Acre
MLS #4195609



INFO

412 Melnick Terrace
Asheville, NC 28803
3 Bedrooms, 2 Bathrooms
1,957 SF • 0.95 Acre
MLS #4195609

FEATURES

- Extraordinary home on a quiet cul-de-sac in Keswick Hills, a private, gated community ideally located 20 minutes from downtown Asheville and close to South Asheville amenities
- Luxurious, custom-built home with tons of natural wood elements from the creative vision of the home's owner (former owner of Smokey Mountain Lumber, Inc.)
- Picturesque neighborhood boasts fabulous landscaping
- Excellent floor plan includes convenient one-level living on the main floor and a spacious, unfinished basement — ready to be designed/completed for extra square footage, or perfect for workshop space, hobby room, or extra storage
- Lots of outdoor living with a covered + sunny back deck and a fully fenced backyard with room to play; lovely landscape highlighted by mature trees and shrubs
- Covered front porch for relaxing; solid white oak front door



Excellent South Asheville Location

- Inviting foyer with slate-tiled entry, wainscoting accent wall, and a large coat closet with walnut shelving
- Third bedroom or home office off of foyer with french doors and walnut flooring
- Spacious living room with gorgeous, quarter-sawn white oak floors, knotty cypress vaulted ceiling, exposed beams, gas fireplace with walnut mantel and slate-tiled surround, walnut media center (can be removed) with display shelves and extra storage, walnut shiplap wall accent, and large picture window overlooking the backyard

FEATURES (CONTINUED)

- Chef's kitchen features quartz countertops; dark grey stainless steel appliances; beautiful soft-close, semi-custom Medallion cabinets (and drawers) with crown molding; pantry closet with American beech shelving; and a double sink
- Versatile breakfast bar connects kitchen with living area
- Dining area off of kitchen has a bay window and deck access
- Deck is perfect for al fresco dining, with both covered and open portions, durable Trex decking, and a reclaimed southern yellow pine ceiling
- Bright primary bedroom on main level includes a knotty pine accent wall, oversized windows for great natural light, and an ensuite full bathroom with a quartz-topped double vanity, white oak backsplash, tiled walk-in shower, soaking tub, and large walk-in closet with built-in walnut organization
- Split plan with guest bedroom that has ample closet space
- Full bathroom with granite-topped vanity; linen closet with custom walnut shelving
- Laundry room with utility sink on main level
- Amazing basement with many possibilities features an exterior entrance for easy access, and an abundance of extra storage
- Oversized, two-car garage opens to mudroom, laundry room



Covered + Sunny Deck Is Ready for Al Fresco Dining



Covered Front Porch with Solid White Oak Door



Spacious Living Room with Quarter-Sawn White Oak Floors and a Knotty Cypress Tongue-and-Groove Vaulted Ceiling



Richly Stained Solid White Oak Door • Slate-Tiled Entry



Large Picture Window for Abundant Natural Light



Stone Floor-to-Ceiling Gas Fireplace with Walnut Mantel



Custom-Built Walnut Media Center and Accent Wall



Open and Airy



Chef's Kitchen Features Quartz, Stainless Steel, and a Double Sink



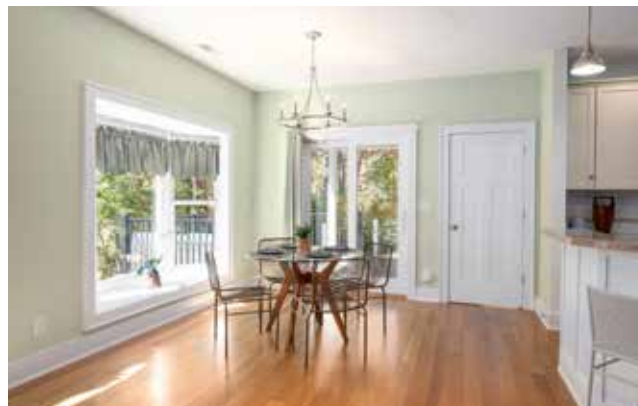
Breakfast Bar Connects Kitchen with Living Area



Soft-Close Medallion Cabinets • Lots of Countertop Space



Laundry Room • Pantry with American Beech Shelves



Dining Area off of Kitchen



Bay Window Overlooks Backyard



Bright Primary Suite with Knotty Pine Accent Wall



Tiled, Walk-in Shower in the Ensuite Bathroom



Luxurious Soaking Tub and Private Water Closet



Double Vanity and Stained White Oak Backsplash



Large Walk-in Closet with Custom-Built Walnut Shelves

412 MELNICK TERRACE

Custom-Built Home in Keswick Hills

Asheville, NC 28803



Private Guest Bedroom



Home Office or Third Bedroom



Second Full Bathroom • Granite Vanity



Unfinished Basement with Many Possibilities



Deck Is Easily Accessed from the Main Level



Plenty of Parking



Oversized, Two-Bay Garage

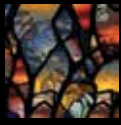


Garage Has Workshop Area

412 MELNICK TERRACE

Custom-Built Home in Keswick Hills

Asheville, NC 28803



MOSAIC
COMMUNITY LIFESTYLE REALTY

60 Biltmore Avenue, Asheville, NC 28801 tel : 828.707.9556 fax: 800.553.1491

WWW.MYMOSAICREALTY.COM



Enjoy Western North Carolina Amenities



Magnificent Home in a Popular Neighborhood



Large Yard Gets Great Sun



Fully Fenced Back Yard for Pets and Play



Lovely Landscaping Frames the Home • Durable Siding and Architectural Shingle Roof

Custom-built home with gorgeous handcrafted woodwork on a quiet cul-de-sac in Keswick Hills — a private, gated community, ideally located in desirable South Asheville. Home features an excellent floor plan that includes convenient main-level living and a huge, unfinished daylight basement, ready for potential expansion. Enjoy outdoor living from the back deck and fenced backyard, lovingly landscaped for four-season interest. The open, airy plan features a spacious living room with a stone fireplace adorned by a walnut mantel and walnut built-ins, knotty cypress vaulted ceiling in the living room, and a spacious chef's kitchen with custom cabinets that opens to a bright dining area. Primary suite features a shiplap accent wall and a spa-like bathroom. Split plan has a private guest bedroom. Slate-tiled entry connects to a home office that could also make a third bedroom. Oversized two-car garage opens to a mudroom and laundry room. Ample guest parking.



For more information, please contact:

MIKE FIGURA

828.337.8190

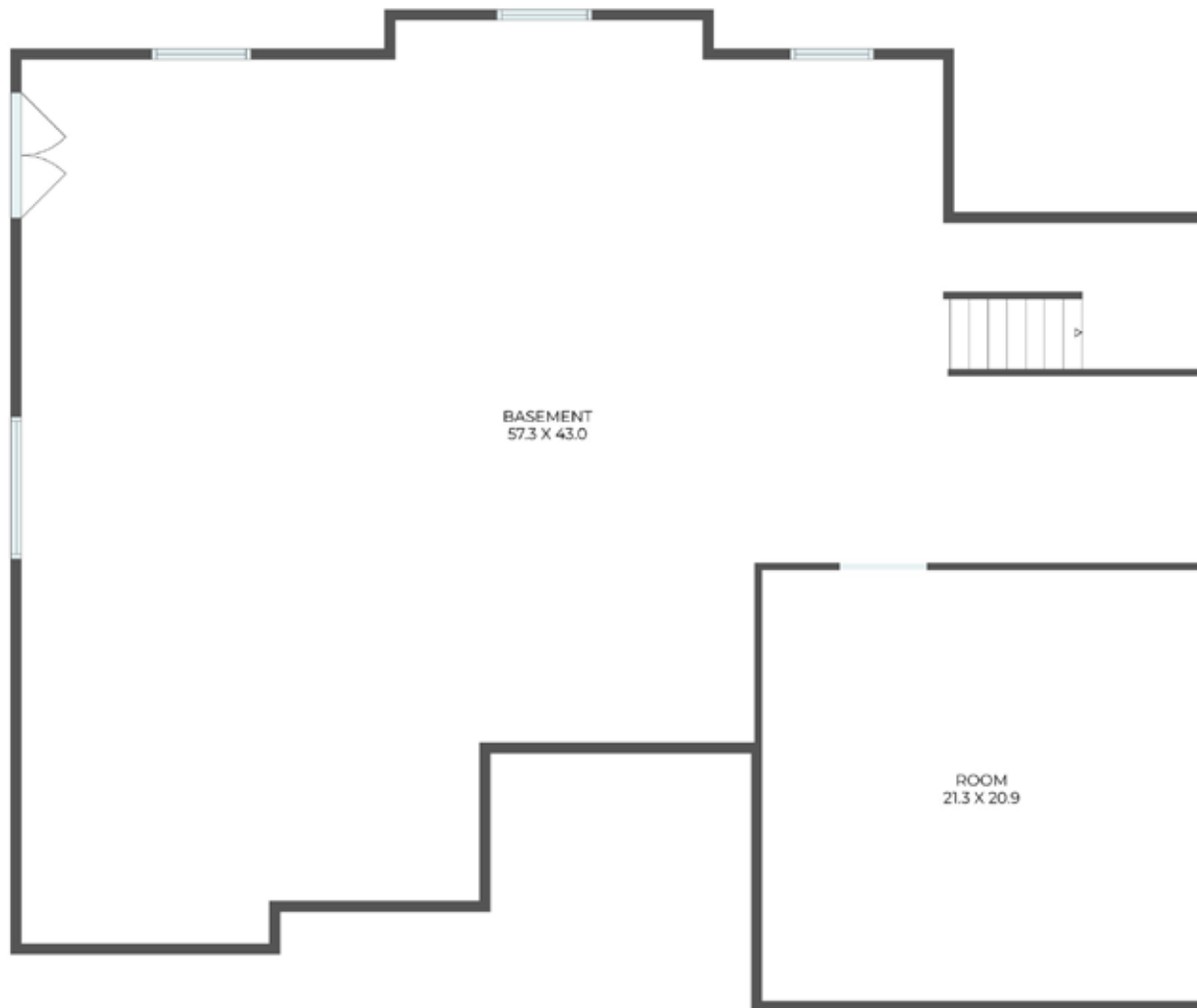
MIKE@MYMOSAICREALTY.COM

DIRECTIONS

FROM DOWNTOWN ASHEVILLE: Take Biltmore Avenue south to Biltmore Village. Turn left onto Sweeten Creek Road. Turn left onto Mills Gap Road. Turn left onto Concord Road. Take a slight right to stay on Concord Road. Turn left onto Keswick Hills neighborhood. Turn right onto Keswick Drive, then stay right onto Melnick Terrace. 412 Melnick is in the cul-de-sac.



MAIN LEVEL



LOWER LEVEL