



MOSAIC
COMMUNITY LIFESTYLE
REALTY

NORTH ASHEVILLE



167 LYNN COVE ROAD | ASHEVILLE, NC 28804

167 LYNN COVE ROAD
ASHEVILLE, NC 28804



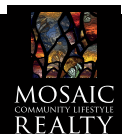
NORTH ASHEVILLE



STUNNING PROPERTY IN NORTH ASHEVILLE'S BEAVERDAM VALLEY

on Lynn Cove Road — a hidden gem about three miles from Blue Ridge Parkway trails and approx 10 mins. from downtown. This unique property on 14 acres includes a beautiful, modern log home; charming, historic barn; exquisite stonework; swimming pool and hot tub, plus meticulously maintained grounds. Home features a wraparound covered porch, great room with a vaulted pine ceiling and wood-burning stone fireplace, and a private primary suite wing. Open and bright, with many windows and a freshly painted interior. Come home to a peaceful setting — stunning trees, a creek running along the road, and a wide-open, level field for gardening/play. No shortage of storage: two-car garage, many closets within the home, and more space under the barn. This is a rare find so close to town; outside city limits (county taxes only), yet within Asheville City Schools district. Must see to truly appreciate!

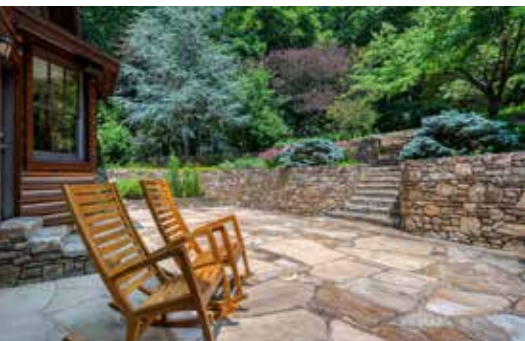
5 BEDS | 3.5 BATHS | BARN | 4,118 SF | 14.09 ACRES | MLS #4135007



MEGAN SHOOK
828-450-6797
MEGAN@MYMOSAICREALTY.COM

167 LYNN COVE ROAD

ASHEVILLE, NC 28804



167 LYNN COVE ROAD | ASHEVILLE, NC 28804

5 BEDS | 3.5 BATHS | BARN | 4,118 SF | 14.09 ACRES | MLS #4135007

FEATURES

- Stunning 14-acre property in North Asheville's Beaverdam Valley — less than three miles to the Blue Ridge Parkway trails, approximately three miles to Merrimon Avenue amenities
- Approx. 10 mins. to downtown Asheville's thriving art, food, and shopping offerings
- Within 3-4 miles of two award-winning, 18-hole golf courses in North Asheville
- Meticulously maintained home plus historic and charming barn, swimming pool and hot tub, and incredibly private acreage
- Exterior features of home include: covered wraparound porch, screened-in porch overlooking the swimming pool, abundance of exquisite stonework
- Six-inch log siding with saddle-notch corners; front siding is reclaimed from original cabin on property
- Hurd solid oak exterior doors and double-hung windows
- Main level of home includes a spacious great room with vaulted pine ceiling, wood-burning stone fireplace, custom built-ins, and dining space
- Kitchen invites the best of chefs with its oversized island, Bosch induction cooktop, double Thermador ovens, Sub-Zero refrigerator/freezer, bonus vegetable sink and spacious pantry cabinets
- Main level includes a guest bedroom with an adjoining bath and patio access — ideal for your pool parties! — plus a fabulous sunroom
- Open-tread solid oak stairwell features custom wrought iron railing and paneled oak interior doors
- Upstairs includes an impressive and private primary suite wing
- Upstairs also includes three additional bedrooms and one full bath
- Large primary bedroom has vaulted ceiling and large windows with tree views
 - » Spacious bathroom includes a toilet closet with bidet, double vanity, large soaking tub, and walk-in double shower
 - » Double closets, custom dresser, and modern light fixtures
- Upstairs also includes two more bedrooms, plus an office and one full bathroom

FEATURES CONTINUE ON NEXT PAGE >



MYMOSAICREALTY.COM • DOWNTOWN ASHEVILLE • 828-707-9556

167 LYNN COVE ROAD | ASHEVILLE, NC 28804

5 BEDS | 3.5 BATHS | BARN | 4,118 SF | 14.09 ACRES | MLS #4135007

FEATURES (CONTINUED FROM PREVIOUS PAGE)

- Laundry room is conveniently located on the same level as most bedrooms; sink, hanging rack, and cabinetry included
- Whole-house wiring for cable, internet, fiber optic, audio, whole-house and barn security system, plus a Honda generator
- Restored 1918 barn has its own mini-split HVAC system, ideal for home office or home gym (no water)
 - » 100-amp electrical service, cathedral ceilings, icynene foam insulation, recycled heart pine flooring
 - » Large tool and bike storage under the barn — ideal workshop for any hobbies
 - » Extra storage room under the barn for riding lawn mower, yard equipment, etc.
- In-ground Pebble-Tec swimming pool and hot tub is surrounded by stunning native fieldstone walls and flagstone patios
- Pool is heated by solar and propane; surrounded by wrought iron fence
- Pool house for equipment and toys
- Acreage stretches from the road up to the ridge — plenty of level space to play and garden; also, there's an ideal sledding hill for winter fun!
- Extensive, mature professional landscaping with outdoor lighting; mature trees throughout the property, including the showstopper oak tree that greets you upon entry
- Treehouse, fenced-in garden area, open field, and running creek all provide spaces to explore and play
- Located just outside of city limits:
 - » County taxes only
 - » Asheville City School district
 - » City water and sewer

DIRECTIONS

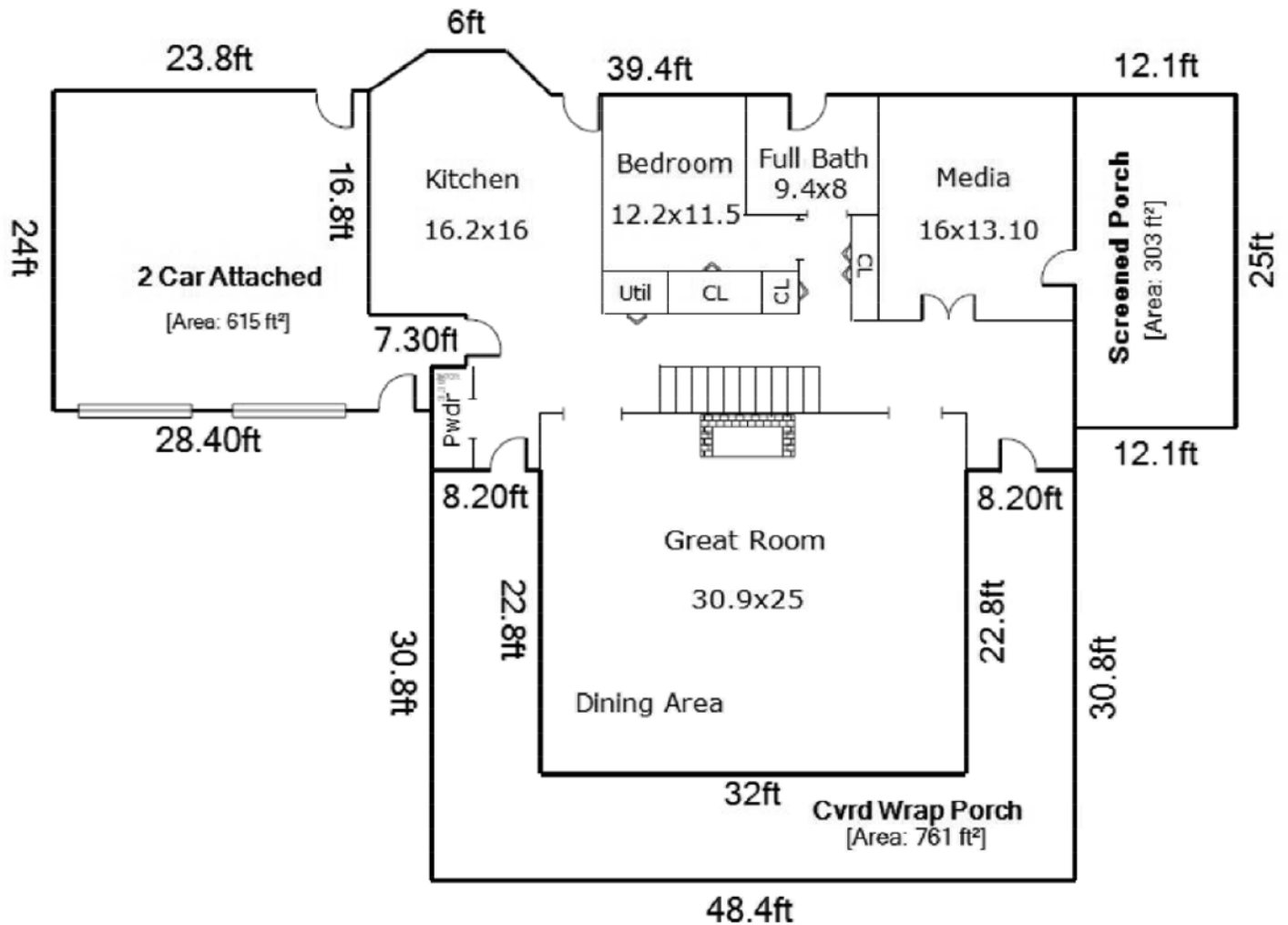
FROM DOWNTOWN ASHEVILLE: Take Charlotte Street north toward the Grove Park Inn. Turn left on Edwin Place (Edwin Place turns into Kimberly Avenue). Turn right on Beaverdam Road. Go straight/left when Beaverdam ends onto Lynn Cove Road. Home will be on your right.



167 LYNN COVE ROAD | ASHEVILLE, NC 28804

5 BEDS | 3.5 BATHS | BARN | 4,118 SF | 14.09 ACRES | MLS #4135007

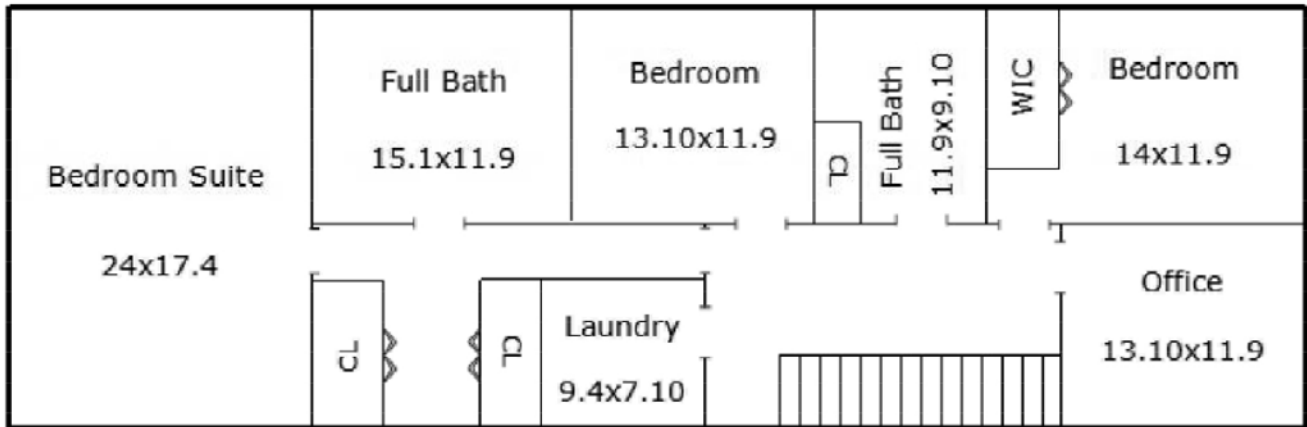
MAIN LEVEL



167 LYNN COVE ROAD | ASHEVILLE, NC 28804

5 BEDS | 3.5 BATHS | BARN | 4,118 SF | 14.09 ACRES | MLS #4135007

UPPER LEVEL



BARN

