



MOSAIC
COMMUNITY LIFESTYLE
REALTY

WEST ASHEVILLE



28 LAMB AVENUE | ASHEVILLE, NC 28806

28 LAMB AVENUE
ASHEVILLE, NC 28806



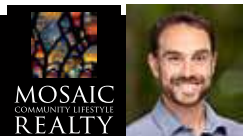
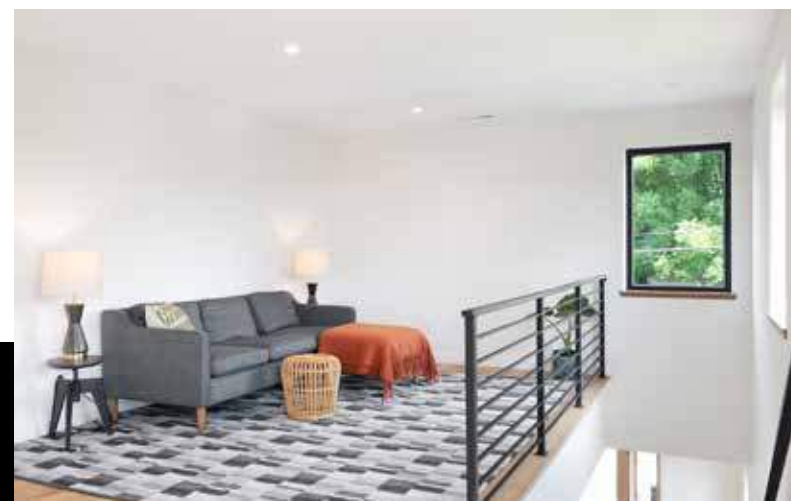
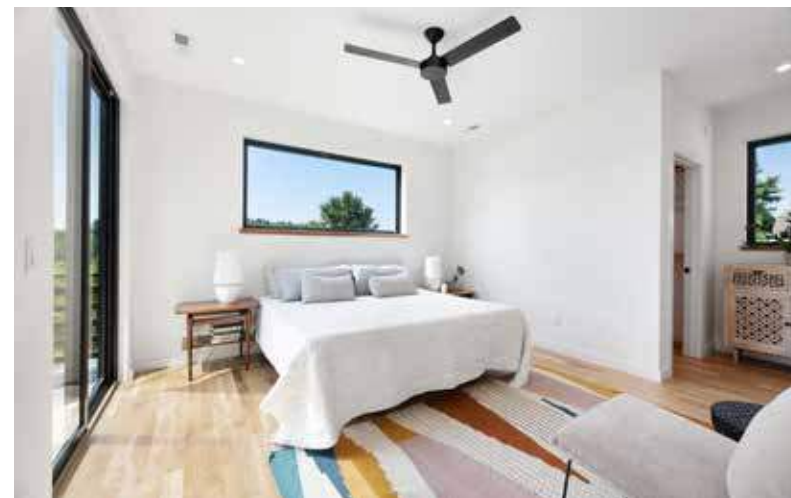
WEST ASHEVILLE



ARCHITECTURALLY STUNNING GREENBUILT AND ENERGY STAR HOME

by JAG Construction in walkable West Asheville, steps from Carrier Park and the French Broad River. This new home boasts expansive sky and amazing mountain views, overlooking Biltmore Estate property! Enjoy outdoor living from the covered front porch, covered lower-level deck, and sunny main-level deck. Open, flowing floor plan has oversized windows for great natural light + views. Chef's kitchen features quartz counters, stainless appliances, and a gorgeous tile backsplash. Large island/breakfast bar opens to the bright dining area and spacious living room. Custom woodwork and metalwork abound. Spacious, main-level primary suite has private back deck access. Two bedrooms with views, a bathroom and a large bonus area are upstairs. Fully finished, walk-out basement with inviting living, spacious bedroom, bathroom, and second laundry room. Oversized, one-garage with high ceilings opens to the mudroom.

4 BEDS | 3.5 BATHS | 3,290 SF | 0.11 ACRE | MLS #4167475



MIKE FIGURA
828-337-8190
MIKE@MYMOSAICREALTY.COM

28 LAMB AVENUE ASHEVILLE, NC 28806



28 LAMB AVENUE | ASHEVILLE, NC 28806

4 BEDS | 3.5 BATHS | 3,290 SF | 0.11 ACRE | MLS #4167475

FEATURES

- Architecturally stunning, brand-new GreenBuilt and Energy Star home by JAG construction with expansive mountain views overlooking Biltmore Estate land
- Walkable to Carrier Park and French Broad River Park, this stunning home boasts excellent proximity to the Greenway, River Arts District, and Haywood Road; minutes to downtown Asheville
- Endless opportunity to connect and explore local and regional trail systems and bike paths — perfect for the outdoor enthusiast
- Enjoy outdoor living from the covered front porch, covered lower-level deck, and sunny main-level deck
- Custom woodwork and metalwork create ambiance with Masonite doors and white oak floors, cabinets and panel accents adorning the home
- Open, flowing floor plan with main level garage + oversized windows that grace the home with an abundance of natural light
- Covered front porch with vaulted ceiling opens to an 8-foot-tall, full-light front door, creating an inviting entry
- Mudroom off of garage with sitting bench
- Bright and spacious living room offers mountain views and an electric fireplace with a maple-slat surround
- Sunny back deck with mountain views is ready for gatherings
- Sparkling chef's kitchen features quartz countertops, stainless steel appliances, custom tile backsplash, modern cabinets + floating shelves, a pantry, and a large picture window over the sink for great light
- Large kitchen island with great undercounter storage + breakfast bar
- Primary bedroom on main level features gorgeous hardwood floors, a large walk-in closet with built-in organization, private back deck access, and an ensuite full bathroom with two quartz-topped vanities, a tile-surround soaking tub, and a tiled, walk-in shower
- Powder room and laundry room on main level; second laundry room in basement
- Spacious upstairs landing has many possibilities; space for bonus sitting/play area
- Two bedrooms (with mountain views) and a full bathroom comprise second level
- Second-level full bathroom features a granite-topped double vanity, and a tiled shower + tub

FEATURES CONTINUE ON NEXT PAGE >



28 LAMB AVENUE | ASHEVILLE, NC 28806

4 BEDS | 3.5 BATHS | 3,290 SF | 0.11 ACRE | MLS #4167475

FEATURES (CONTINUED)

- Fully finished, walk-out basement with large living area, spacious bedroom, full bathroom, second laundry room, and extra storage under the stairs; basement has been plumbed for future kitchenette
- Attic also has plenty of storage space
- Oversized, one-car garage with utility sink
- Professionally landscaped yard features native plants; local, big-boulder accents; large-paver steps; a French drain; and space to enjoy the changing Western North Carolina seasons

GREEN FEATURES

- GreenBuilt NC and Energy Star Certified
- Formaldehyde-free insulation in walls and 6" of spray foam insulation in the ceilings and bands
- Air sealed
- No-VOC paints and adhesives
- Energy Star windows, appliances and lighting
- Multitude of windows for lots of natural light (daylighting)
- Fresh air introduction + ductwork sealed and tested
- Superior Wall® foundation
- Low-flow toilets and fixtures
- Durable materials
- Infill development in a walkable neighborhood
- Native and drought-tolerant landscaping, including boulder landscape stones
- Local and regional material use
- Living Wage Certified builder

DRIVING DIRECTIONS

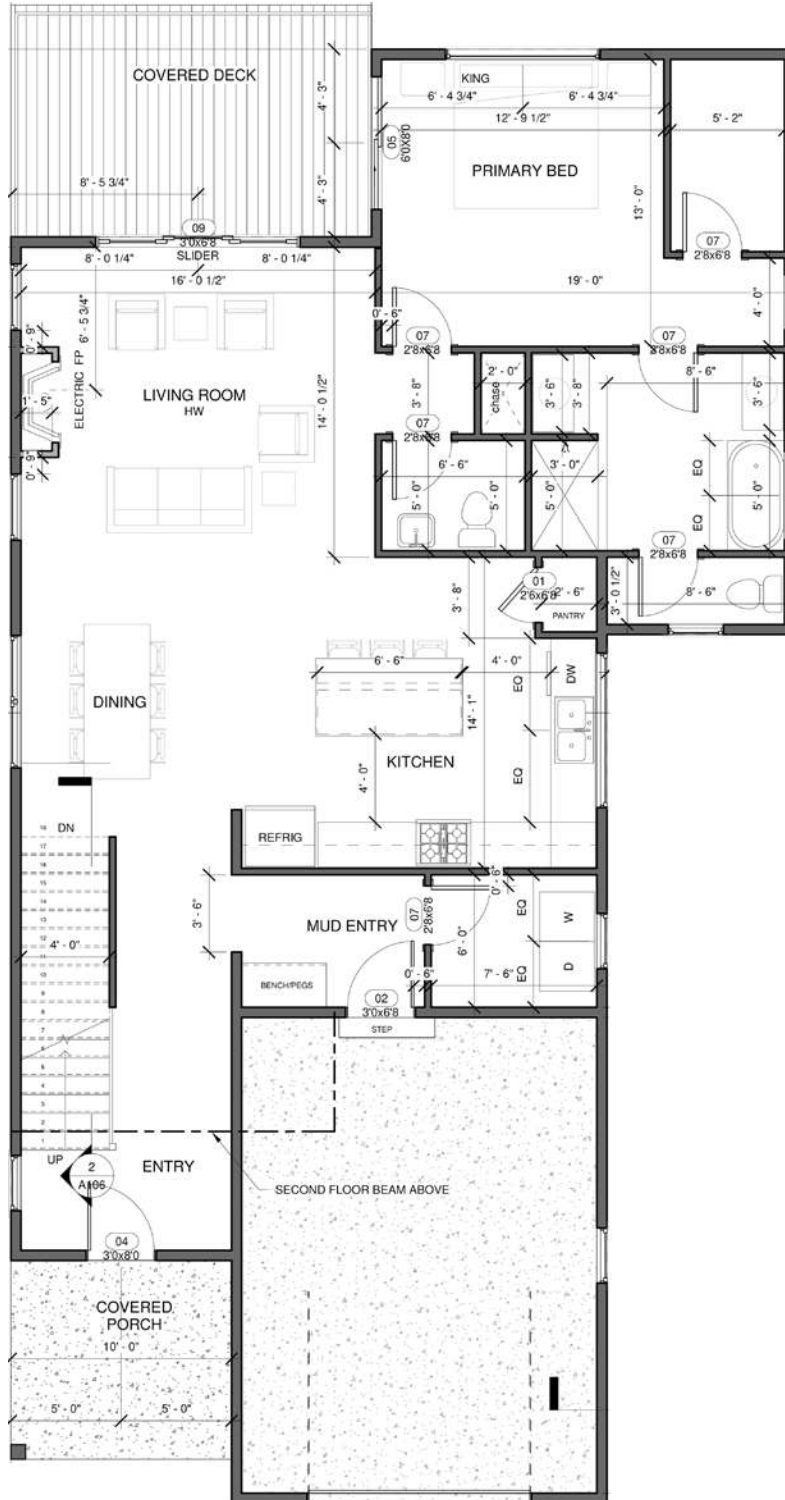
FROM DOWNTOWN ASHEVILLE, take 240 towards I-40 west - to Exit 2 towards West Asheville. Turn left onto Haywood Road. Continue onto Beverly Road at Beachum's Curve. Turn right onto Riverview Drive. Take a slight left turn onto Riverview Drive. Turn right onto Clifton Avenue. Turn right onto Lamb Avenue. 28 Lamb Avenue is on the left. Sign in the yard.



28 LAMB AVENUE | ASHEVILLE, NC 28806

4 BEDS | 3.5 BATHS | 3,290 SF | 0.11 ACRE | MLS #4167475

MAIN LEVEL



28 LAMB AVENUE | ASHEVILLE, NC 28806

4 BEDS | 3.5 BATHS | 3,290 SF | 0.11 ACRE | MLS #4167475

UPPER LEVEL

