



72 LACEY LANE

Quiet, Nature-Forward Mountain Home | Hendersonville



MOSAIC
COMMUNITY LIFESTYLE REALTY

3 Bedrooms, 2 Bathrooms
1,852 SF • 0.50 Acre
MLS #4308230



72 LACEY LANE HENDERSONVILLE, NC 28739

3 Bedrooms, 2 Bathrooms
1,852 SF • 0.50 Acre
MLS #4308230

THE HOME

- Single-level living with a thoughtful, split-bedroom floor plan
- Dedicated office with closet (ideal flex space)
- Cozy living room
- Wood-burning stove
- Skylight for natural light
- Laundry on main level
- Well water and septic

OUTDOOR LIVING & SETTING

- Covered, west-facing front porch with beautiful afternoon light
- Seasonal Blue Ridge Mountain views
- Glimpse the French Broad River through the trees
- Peaceful evenings with a cabin-like feel

LANDSCAPING & GROUNDS

- Native wildflower plantings replacing traditional turf in multiple areas
- Pollinator-friendly yard; deer frequent the property
- Azaleas on the sloped rear yard
- Native wildflowers and hostas near the house
- Thoughtful, low-maintenance landscape designed to blend into the natural surroundings



RECENT IMPROVEMENTS & UPDATES

- 2025: New roof, rain gutters with fine-mesh leaf and pine needle guards; new well pump; new crawlspace dehumidifier; back entrance steps replaced
- 2024: New 10' x 12' shed
- 2023: Flagstone walkway to front porch; front porch landing, steps & railings replaced
- 2022: Crawlspace full encapsulation; ceiling fans added; new dishwasher

LOCATION HIGHLIGHTS

- 10 minutes to Etowah (Ingles, dining, medical)
- 20 minutes to downtown Hendersonville
- 20 minutes to downtown Brevard
- About 45 minutes to downtown Asheville
- Minutes to Horse Shoe and Ecusta trailhead

OUTDOOR RECREATION NEARBY

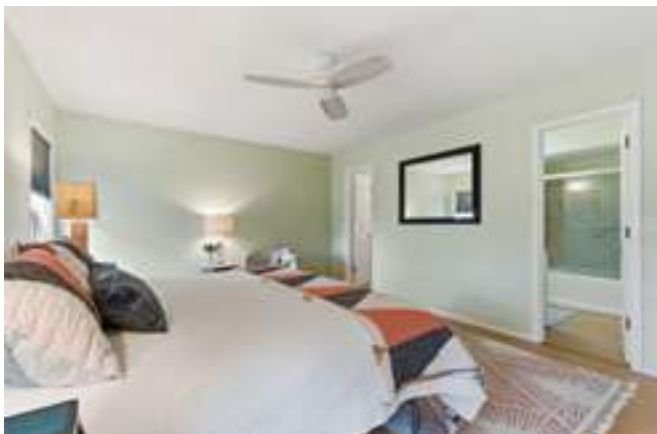
- Jump Off Rock (trails and scenic overlook)
- Ecusta Trail (walking and biking)
- Holmes Educational State Forest
- DuPont State Recreational Forest
- Pisgah National Forest
- Davidson River and its campground
- Eastern entrance to Great Smoky Mountains National Park (approximately 75 minutes)
- Nearby breweries—including Sierra Nevada, Sideways Farm and Brewing, Mills River Brewing, Appalachian Mountain Brewing, Bold Rock Mills River Cidery, and Burning Blush Brewery



MOSAIC
COMMUNITY LIFESTYLE REALTY

46 Orchard Street, Suite 100, Asheville, NC 28801
WWW.MYMOSAICREALTY.COM







MOSAIC
COMMUNITY LIFESTYLE REALTY

46 Orchard Street, Suite 100, Asheville, NC 28801
WWW.MYMOSAICREALTY.COM



72 LACEY LANE
Quiet, Nature-Forward Mountain Home
Hendersonville, NC 28739





Tucked at the end of a quiet gravel lane, 72 Lacey Lane offers the rare combination of single-level living, thoughtful updates, and a setting that feels immersed in nature while remaining close to everything Western North Carolina has to offer.

The home's west-facing covered front porch is a defining feature—bathed in late-day sunlight, peaceful in the evenings, and offering seasonal Blue Ridge Mountain views with a subtle glimpse of the French Broad River through the trees. As traffic fades on nearby roads, the setting takes on a calm, cabin-like feel that invites lingering on the porch and slowing down.

Inside, the home features a well-designed split-bedroom floor plan with three bedrooms plus a dedicated office with a closet, ideal for remote work, guests, or creative space. A cozy living area anchored by a wood-burning stove in the main dining area adds warmth and character, while generous windows bring in natural light throughout the day.

The grounds have been intentionally reimaged with native wildflowers, azaleas, and hostas, creating a pollinator-friendly, low-maintenance landscape that blends naturally into the surrounding environment. Deer are frequent visitors, reinforcing the home's connection to its setting.

Located just minutes from Etowah, Hendersonville, Brevard, and world-class outdoor recreation—including the Ecusta Trail, Pisgah National Forest, and DuPont State Forest—this property offers an ideal balance of privacy, simplicity, and access to the best of the region.



For more information, please contact:

WARD W. CALDWELL
828-424-5231
WARD@MYMOSAICREALTY.COM

DIRECTIONS

FROM ASHEVILLE: Take I-26 E to Exit 40 (Arden/NC-280/Asheville Regional Airport). Use any lane to turn slightly right onto NC-280 W. In 4.7 mi, turn left onto Haywood Rd. In 0.4 mile, turn right onto Banner Farm Rd. In 2 mi, turn right to stay on Banner Farm. Continue for 1.5 mi, then make a sharp right onto US-64 W. Follow for 1.4 mi and then turn left onto Cummings Rd. In a couple of miles, turn right onto Big Willow Rd, then take an almost immediate left onto Lacey Lane. Follow it to the end. 72 Lacey Lane is the third house on the road.



FLOOR PLAN