



MOSAIC
COMMUNITY LIFESTYLE
REALTY

EAST ASHEVILLE



257 JONES COVE ROAD | ASHEVILLE, NC 28805

257 JONES COVE ROAD
ASHEVILLE, NC 28805



EAST ASHEVILLE

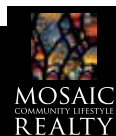


SET WITHIN THE PEACEFUL AND PICTURESQUE JONES COVE VALLEY

... this extraordinary property captures the quiet elegance of mountain living with a sense of privacy and grace that is increasingly rare. Surrounded by wooded beauty and enriched by a pond, waterfall, and layered outdoor spaces, the home feels timeless and deeply connected to its setting. Publicly offered for the first time, it is a singular opportunity to own a residence that has long been passed quietly from one steward to the next.

Inside, the home is a study in warmth, scale, and craftsmanship. Renovated in 2018, its interiors are defined by vaulted ceilings, exposed beams, rich hardwoods, and expansive windows that frame the surrounding landscape. A striking stone fireplace anchors the main living space, while the kitchen and dining areas blend understated sophistication with effortless function. The primary suite offers a true sense of retreat, while the upper and lower levels provide beautifully composed spaces for guests, work, wellness, and recreation. Separate living quarters above the detached garage add another layer of flexibility and privacy. With geothermal heating and cooling, high-performance systems, and a setting of exceptional tranquility, this is a home of uncommon beauty and enduring appeal.

3 BEDS | 4.5 BATHS | 4,762 SF | 1.22 ACRES



ELIZABETH PUTNAM
828-301-6374
ELIZABETH@MYMOSAICREALTY.COM

257 JONES COVE ROAD

ASHEVILLE, NC 28805



257 JONES COVE ROAD | ASHEVILLE, NC 28805

3 BEDS | 4.5 BATHS | 4,762 SF | 1.22 ACRES

FEATURES

- Welcoming covered front porch with swing
- Peaceful wooded setting with a charming pond and waterfall feature
- Expansive covered and open decks designed for effortless outdoor entertaining
- Outdoor dining area with statement lighting
- Private hot tub with tranquil forest views
- Light-filled interior with oversized windows and serene natural outlooks
- Built-in reading nook with shelving and sconces overlooking the park-like setting
- Vaulted ceilings and striking architectural details throughout
- Exposed beams add character, dimension
- Open-concept floor plan with seamless flow between the main living spaces
- Floor-to-ceiling stone fireplace anchors the living room
- Rich hardwood floors throughout the main living areas
- Spacious dining area with direct access to the outdoors
- Large kitchen island with bar seating
- Stainless steel appliances and gas cooktop
- Beautiful kitchen countertops and abundant prep space
- Open shelving and thoughtfully integrated storage
- Large spacious pantry
- Main-level laundry
- Crisp, modern finishes paired with warm natural wood accents
- Custom stair railing has artisan character
- Fully renovated in 2018
- Geothermal WaterFurnace system paired with a high-efficiency Trane gas furnace
- Tankless water heater
- Whole-house water filtration system
- Private road maintenance agreement on file

PRIMARY BEDROOM

- Serene main-level primary suite designed as a true private retreat
- Oversized bedroom with rich hardwood floors and ample space to unwind
- French doors open directly to a covered screened porch tucked into the landscape
- Private outdoor sitting area that extends the suite into a peaceful, resort-like setting
- Two walk-in closets offering substantial storage
- Ensuite bath with expansive double vanity
- Crisp stone countertops paired with soft gray cabinetry
- Frameless glass shower with sleek tilework and a clean, modern profile
- Deep soaking tub positioned for relaxation and daily ease



257 JONES COVE ROAD | ASHEVILLE, NC 28805

3 BEDS | 4.5 BATHS | 4,762 SF | 1.22 ACRES

UPPER LEVEL

- Thoughtfully designed upper level offers privacy and flexibility
- Cathedral ceiling with exposed architectural beams soars over the main living room
- Loft area offers flexible space for a second lounge, reading nook, office, or media area
- Abundant natural light from oversized windows and skylights enhances the airy feel
- Two oversized guest bedrooms with generous proportions and room to comfortably accommodate larger furnishings
- Spacious guest bath with extended vanity, tub and shower combination

LOWER LEVEL

- Bright lower level has direct access to the backyard, pond and wooded setting beyond
- Large multipurpose living area is well suited for game tables, movie nights, and gathering with guests
- Separate office or music room with natural light and exterior access, ideal for creative work or a private studio
- Dedicated exercise room offers flexible space for fitness, yoga, or wellness routines
- Additional bedroom and full bath for guests, extended stays, or private lower-level living
- Abundant windows and glass doors bring in natural light and enhance the open feel
- Nicely designed space that functions beautifully for everyday living, hosting a comfortable retreat for guests or creating multigenerational living

DETACHED GARAGE / SECOND LIVING QUARTERS

- Private second living quarters above the garage with separate exterior access for added flexibility, privacy and independence
- Ideal setup for guests, a home office, creative studio, or potential income-producing rental
- Spacious bedroom or studio-style living area with a private full bathroom
- Mini-split system for efficient year-round comfort

DRIVING DIRECTIONS

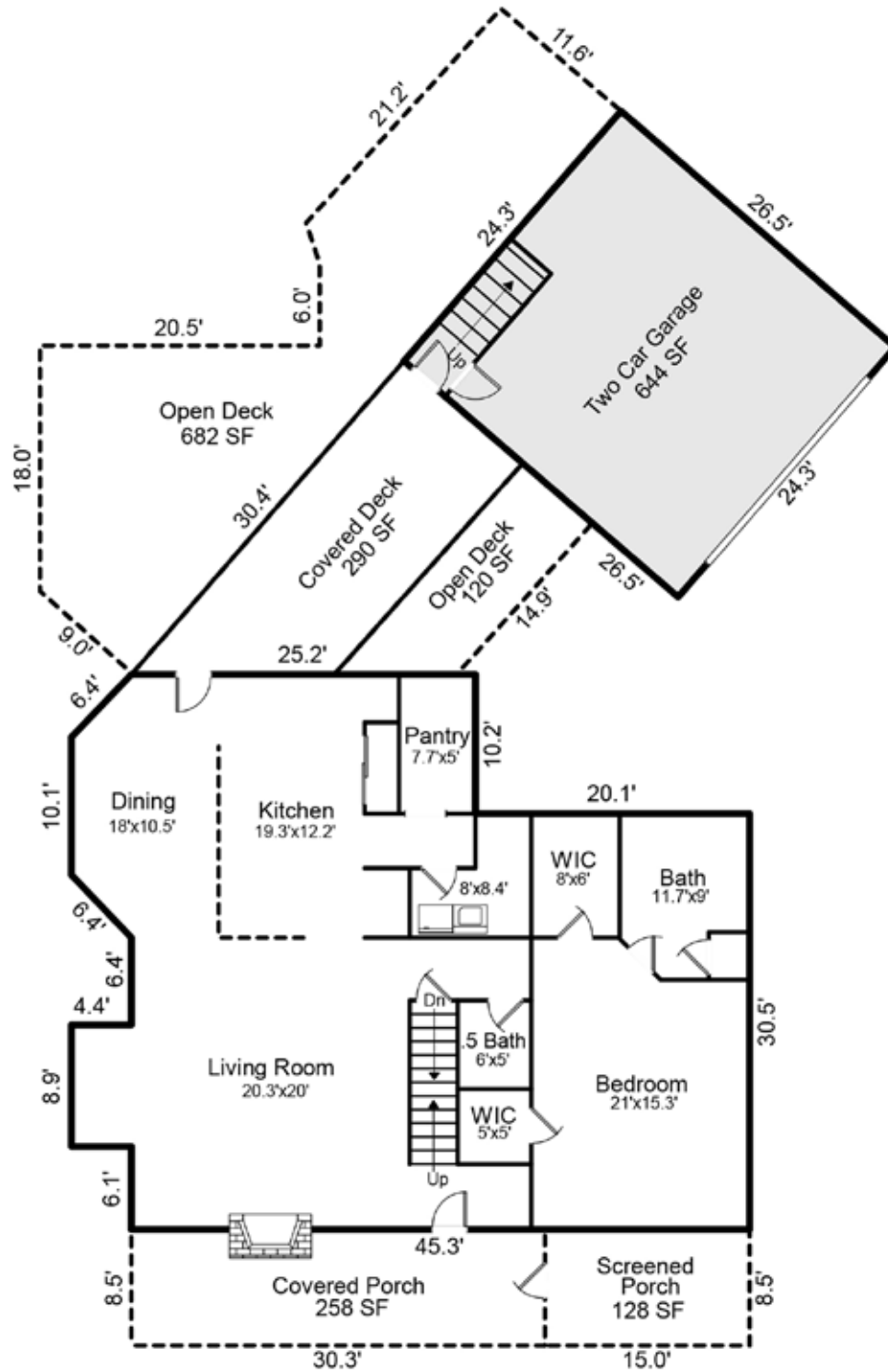
FROM DOWNTOWN ASHEVILLE: Take I-240 E and use Exit 7 to get on US-70 E/Tunnel Road. Continue for 2.1 miles to Riceville Road. Take a left onto Riceville Road and follow for 3.6 miles. Turn left on Bull Creek Road and follow for 0.5 mile. Keep right at the split onto Jones Cove Road and stay for 0.8 mile. Then turn right on gravel across from the row of mailboxes to keep following Jones Cove Road. Look for arrows and directionals pointing to 257 Jones Cove Road.



257 JONES COVE ROAD | ASHEVILLE, NC 28805

3 BEDS | 4.5 BATHS | 4,762 SF | 1.22 ACRES

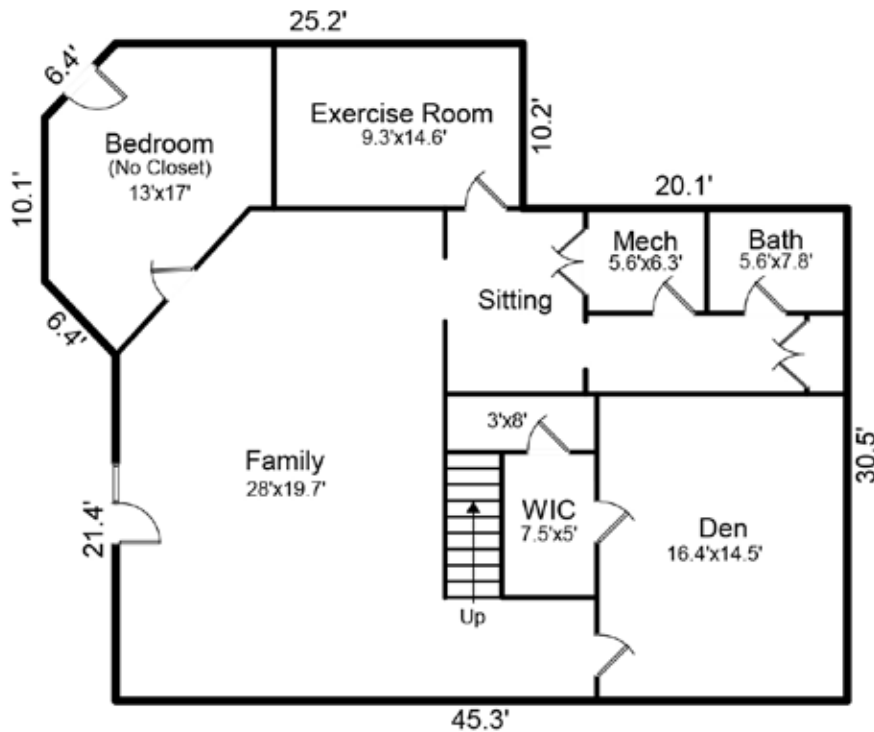
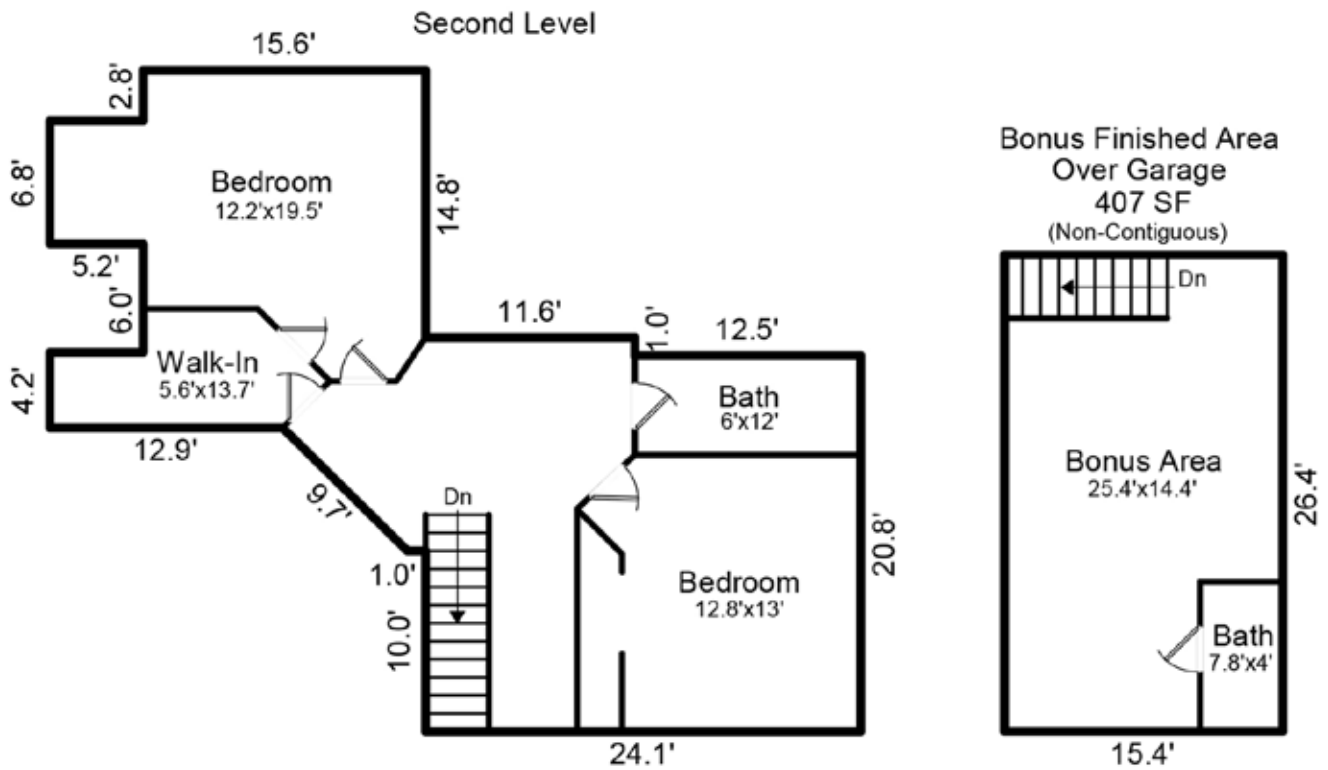
MAIN LEVEL



257 JONES COVE ROAD | ASHEVILLE, NC 28805

3 BEDS | 4.5 BATHS | 4,762 SF | 1.22 ACRES

UPPER LEVEL, BASEMENT & FROG



Basement Level Finished Living Area = 1,703 SF

