



MOSAIC
COMMUNITY LIFESTYLE
REALTY

HAW CREEK



48 HUNTINGTON CHASE DRIVE | ASHEVILLE, NC 28805

48 HUNTINGTON CHASE DRIVE
ASHEVILLE, NC 28805



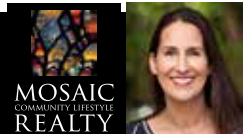
HAW CREEK



UPDATED HOME WITH MOUNTAIN VIEWS IN HAW CREEK

You've found it! This wonderfully updated and maintained mountain home has incredible long-range mountain views, just minutes from downtown Asheville. Feel yourself relax as you take in the views from the front porch or the magical garden area, sipping on morning coffee or evening wine. This lovely home has it all, including a flexible floor plan that's full of natural light. The current owners have impeccably cared for this beauty — from the chef's kitchen with quartzite counters and a gas range to a new roof just last year — so you won't need to worry about a thing and can move right in! Primary suite and laundry room are on the main level, there are three more bedrooms upstairs, and there's also a big daylight basement with a finished flex space and workshop. Backyard has a deck and a stone firepit, and you can enjoy the neighborhood hiking trails that lead to the Mountains-to-Sea Trail. Too much to list, so ask your broker for the full feature list and come see this incredible home today!

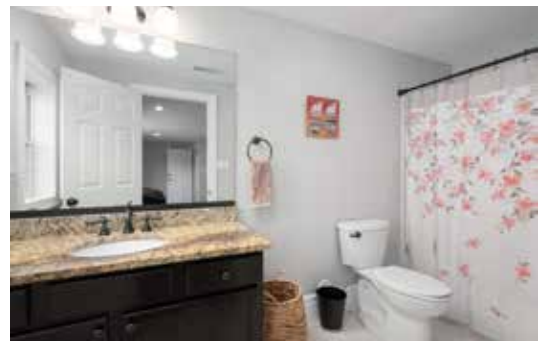
4 BEDS | 3.5 BATHS | 2,815 SF | 0.8 ACRE | MLS #4199625



ALYSSA AUGUSTINE
828-633-5051
ALYSSA@MYMOSAICREALTY.COM

48 HUNTINGTON CHASE DRIVE

ASHEVILLE, NC 28805



48 HUNTINGTON CHASE DR | ASHEVILLE, NC 28805

4 BEDS | 3.5 BATHS | 2,815 SF | 0.8 ACRE | MLS #4199625

FEATURES

- Wonderfully updated and maintained 4 bedroom, 3½ bath home
- Great location in the Huntington Chase neighborhood of Haw Creek
- Incredible long-range mountain views
- Magical garden area is perfect for relaxing and taking in the views
- Flexible floor plan that's full of natural light
- Private, low-maintenance, extra-large 0.80-acre lot
- Covered "rocking chair" front porch perfectly frames the mountains
- Front entry opens into a spacious living room
- Chef's kitchen with gas range and stainless appliances
- Working kitchen island with quartzite counters throughout
- Dining room with cozy gas fireplace
- Spacious back deck overlooks private yard with stone fire pit
- Primary suite on main has fantastic mountain views
- Primary bathroom has walk-in shower and jetted soaking tub, a double-sink vanity, plus a large walk-in closet
- Main-level laundry room with extra storage cabinets
- Beautiful dark wood floors throughout the main level
- Three generously sized bedrooms upstairs
- Ceiling fans in all bedrooms for comfortable sleeping
- Additional bonus room and full bathroom upstairs as well
- Huge, daylight lower level is the perfect flex space
- Full bathroom downstairs has quality finishes
- Large basement workshop/storage area has outside exit

CONTINUED, NEXT PAGE ›



48 HUNTINGTON CHASE DR | ASHEVILLE, NC 28805

4 BEDS | 3.5 BATHS | 2,815 SF | 0.8 ACRE | MLS #4199625

FEATURES (CONTINUED)

- Wine cellar storage wall is ready for your collection
- Tons of storage throughout the home
- Significant list of updates done by the owners including:
 - » New roof in 2023 and upstairs HVAC system in 2022
 - » Replaced sewer line (house to main) and new ejection system
 - » Retaining wall and new front landscaping added
 - » Whole-house humidifier
- Long, private drive at end of cul-de-sac services only two houses
- Home's flat driveway easily parks 4+ cars
- Extra-deep two-car garage has epoxy floor and fits oversized vehicle
- Central vacuum system for easy cleaning
- Radon mitigation system is already in place
- City water and sewer
- \$75/year HOA fee covers road maintenance

DIRECTIONS

FROM DOWNTOWN ASHEVILLE: GPS will get you there. Take I-240E to exit 7. Go STRAIGHT through the first light and LEFT at the second light. Get in the LEFT lane and take LEFT at first LIGHT onto Crockett Avenue. RIGHT at the stop sign onto New Haw Creek Road. Go approximately 2½ miles and take a LEFT onto Huntington Chase Drive. House is up the hill on the LEFT at the end of the cul-de-sac.



48 HUNTINGTON CHASE DR | ASHEVILLE, NC 28805

4 BEDS | 3.5 BATHS | 2,815 SF | 0.8 ACRE | MLS #4199625

MAIN LEVEL



48 HUNTINGTON CHASE DR | ASHEVILLE, NC 28805

4 BEDS | 3.5 BATHS | 2,815 SF | 0.8 ACRE | MLS #4199625

UPPER LEVEL



LOWER LEVEL

