



 Matterport™

69 HESLAR WAY

Charming Mountain Retreat on 4.5+ Acres | Marshall



MOSAIC
COMMUNITY LIFESTYLE REALTY

3 Bedrooms, 2 Bathrooms
2,169 SF • 4.66 Acres
MLS #4345073

69 HESLAR WAY MARSHALL, NC 28753

3 Bedrooms, 2 Bathrooms
2,169 SF · 4.66 Acres
MLS #4345073

FEATURES

Mountain views

Tons of wildlife

Rocking chair front porch

Retractable awning for back deck

Lovely cabin on 4.66 acres

Hardwood floors

Granite countertops

Surrounded by mountains and farmland

Some furniture included

Multiple storage workshops with electric

Loft makes a large third bedroom

Two fireplaces: One propane on the basement level and one wood-burning insert in the living room

Perfect forever home, vacation rental, or second home

UTV can be purchased

New septic riser and pump

New roof, 2025

New exterior paint, 2024



NEARBY AMENITIES

Grateful Roots Market and Deli, 4.6 miles

Addison Farm Vineyards, 5.4 miles

Downtown Marshall, 8 miles

Salty Goat Grill, 5.4 miles

Novant Health Urgent Care, 12 miles

Downtown Weaverville, 13 miles

Ingles Groceries, 13.4 miles

Gold's Gym, 14.4 miles

Sam's Club, 15 miles

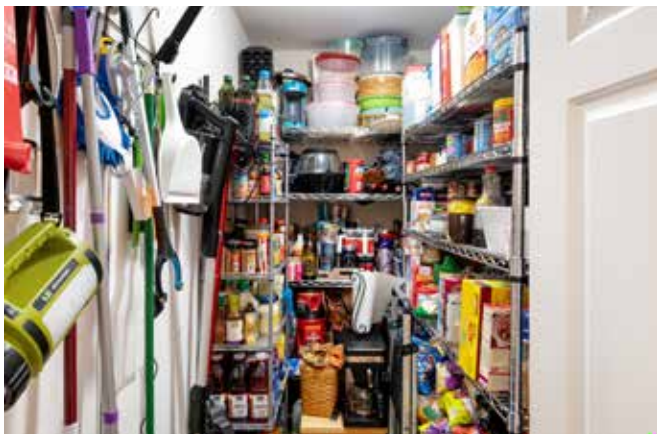
West Asheville, 15 miles

Downtown Asheville, 16 miles

Mission Hospital, 17 miles

Biltmore House, 18 miles

Cataloochi Ski Resort, 46 miles



69 HESLAR WAY
Charming Mountain Retreat on 4.5+ Acres
Marshall, NC 28753



69 HESLAR WAY
Charming Mountain Retreat on 4.5+ Acres
Marshall, NC 28753



69 HESLAR WAY
Charming Mountain Retreat on 4.5+ Acres
Marshall, NC 28753



69 HESLAR WAY
Charming Mountain Retreat on 4.5+ Acres
Marshall, NC 28753



Charming mountain retreat 20 minutes from downtown Asheville, nestled on 4.66 beautiful acres. This adorable 3 BR/2 BA cabin offers the perfect blend of privacy, comfort, and breathtaking mountain views. Enjoy peaceful mornings on the porch overlooking mountain views and evenings surrounded by nature. The spacious acreage provides room to garden, explore, or simply relax and take in the fresh mountain air. Conveniently located just a short drive to local amenities, dining, and shopping, this property offers the best of both worlds—seclusion without sacrificing accessibility. The main level features an open floor plan, a primary bedroom with an ensuite bath, and a vaulted-ceiling living room with a wood-burning stove. Upper-level loft features a large guest bedroom with a tongue-and-groove ceiling. The lower level includes another guest bedroom with an ensuite bathroom, a family room, and a gas fireplace. Outside, there is plenty of garden space and two large studio workshops, wired with electricity and insulated with a loft, for all your hobby needs. Whether you're searching for a cozy vacation getaway, a short-term rental opportunity, or a full-time homestead, this sweet mountain cabin is ready to welcome you home. Located in the Buncombe County part of Marshall, the property would make a great STR with most of the furniture included. Don't miss this rare opportunity to own your own slice of paradise! Peace, privacy, and panoramic beauty await—all just a scenic drive from quaint Marshall and Asheville.



For more information, please contact:

LEANN BOUND
828-713-2316

LEANN@MYMOSAICREALTY.COM

DRIVING DIRECTIONS

FROM DOWNTOWN ASHEVILLE: Take I-240 W; keep left at Patton Avenue. Turn right onto New Leicester Highway/NC-63. Turn right onto Don Felmet Road, left onto Piney Knob Road, left at Nikki Way, and left onto Heslar Way. Home will be on the right.



MAIN LEVEL



LOFT



LOWER LEVEL

LOFT AND LOWER LEVEL