



30 GREENWOOD FIELDS DRIVE

Beautifully Maintained Home in an Established North Asheville Neighborhood



MOSAIC
COMMUNITY LIFESTYLE REALTY

3 Bedrooms, 2.5 Bathrooms
2,731 SF + 566 SF Garage • 0.09 Acre
Office Exclusive



30 GREENWOOD FIELDS DRIVE ASHEVILLE, NC 28804

3 Bedrooms, 2.5 Bathrooms • 2,731 SF + 566 SF Garage • 0.09 Acre
Office Exclusive

FEATURES

Beautifully maintained home in an established North Asheville neighborhood

Amazing mature landscaping includes an apple tree, evergreen trees, and raised bed gardens

Bright living room with oversized windows for great natural light

Well-equipped kitchen features granite countertops, stainless steel appliances, beautiful shaker cabinets, gas range and pantry closet

Open floor plan with lots of natural light

Solar panels with EV-Charger in garage

Real stone fireplace surround with natural gas fireplace

Main-level primary bedroom suite with dual-sink bathroom vanity

Breakfast bar separates the living room from the dining area

Basement bonus room with stained concrete floors

Private, fenced-in backyard oasis, perfect for entertaining

Upstairs bedrooms have private sink vanities

Oversized one-car garage with lots of extra storage space





30 GREENWOOD FIELDS DRIVE

Beautifully Maintained Home in North Asheville

Asheville, NC 28804







MOSAIC
COMMUNITY LIFESTYLE REALTY

46 Orchard Street, Suite 100, Asheville, NC 28801
WWW.MYMOSAICREALTY.COM





Immaculately maintained home in an established North Asheville neighborhood is conveniently located just minutes from both Weaverville and downtown Asheville. Built in 2018, the original owners have made many upgrades, including installing solar panels and an EV charger, adding a bonus room in the basement, and enclosing a sunroom on the rear of the home. Improvements outside the home include backyard fencing, adding raised bed gardens and creating a backyard patio oasis that's perfect for entertaining guests. This light-filled, open-plan home features a stone fireplace surround with gas logs and quality finishes throughout. The kitchen has granite countertops, stainless steel appliances, a gas range, and a breakfast bar separating the kitchen from the dining area. The basement-level garage also provides ample storage. This move-in-ready home is a must-see for anyone who is looking for a state-of-the-art property close to town.



For more information, please contact:

ERIC ALBEE
828-712-9395
ERIC@MYMOSAICREALTY.COM

DIRECTIONS

FROM DOWNTOWN ASHEVILLE: Take I-240 to I-26 W toward Weaverville. Take Exit 23 (Woodfin/N AVL/Merrimon), turn right at the stop sign, then take an immediate left onto US-25 N/Weaverville Road. Follow for 1.3 miles, then turn left onto Old Marshall Highway. After 1.6 miles, turn left into Greenwood Fields (Greenwood Fields Drive). Continue straight; 30 Greenwood Fields Drive will be on the left.



BASEMENT LEVEL

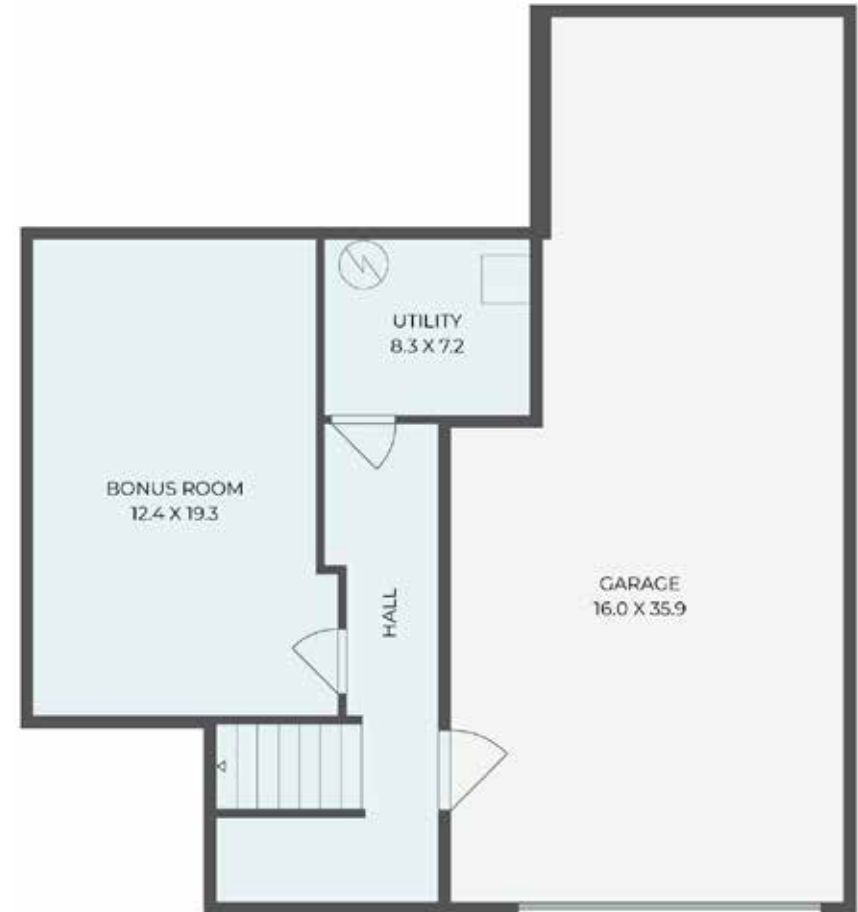


UPPER LEVEL

MAIN LEVEL



UPPER LEVEL



BASEMENT LEVEL

UPPER AND BASEMENT LEVELS