



24 GREENWOOD FIELDS DRIVE

Spacious Cape Cod Home in Greenwood Fields



MOSAIC
COMMUNITY LIFESTYLE REALTY

3 Bedrooms | 2 Full, 2 Half Bathrooms
2,166 SF • 0.10 Acre
MLS #4062718

INFO

24 Greenwood Fields Drive
Asheville, NC 28804
3 Bedrooms | 2 Full, 2 Half Bathrooms
2,166 SF • 0.10 Acre
MLS #4062718

FEATURES

- Spacious Cape Cod home in conveniently located Greenwood Fields
- Minutes from North Asheville, Weaverville amenities, and only a short drive to downtown Asheville
- Lovely neighborhood featuring great streets for walking, biking and mingling with the neighbors
- Enjoy three levels of functional living space, including a large flex space in the basement with plenty of possibilities
- Lots of outdoor living includes the expansive covered front porch for relaxing, sunny back deck, and fully fenced back yard, perfect for furry friends
- Entrance to the home from the the driveway and attached garage; solid stairwell leads to main level
- Spacious living room with gas log fireplace creates cozy ambiance
- Kitchen features granite countertops, stainless steel appliances, beautiful cabinets with crown molding and a pantry
- Dining room off kitchen has space for large table, back deck access
- Sunny back deck and fully fenced back yard is ready for gatherings with friends and family



Covered Front Porch for Neighborhood Gazing

- Laundry closet on main level
- Three bedrooms and two full bathrooms upstairs are highlighted by the bright primary suite with walk-in closet, a second closet, and an ensuite bathroom that includes a granite vanity and walk-in shower
- Second full bathroom on the second level also has a granite vanity
- Finished, walk-out basement offers a large flex space, a powder room, a storage closet, and extra storage under the stairs
- Attached one-car garage provides utility room access, plus loads of tool and toy storage
- Durable materials for easy, low-maintenance living



Lots of Space to Relax



Gas Log Fireplace Creates Cozy Ambiance



Open and Airy Feel



Bright Dining Room off Kitchen



Space for Large Table • Back Deck Access



Wide Interior Doorways Connect Main-Level Rooms



Great Flow through the Home



Beautiful Cabinets with Crown Molding



Kitchen Features Granite and Stainless Steel



Interior Basement Entrance



Laundry Closet on Main Level



Upstairs, the Primary Suite Has Lush Carpeting



Space for a King-Size Bed



Primary Suite Features Two Closets and an Ensuite Bath



Granite Vanity and Walk-in Shower



Walk-in Closet Is Accessed through Ensuite Bathroom



The Second of Three Upstairs Bedrooms

24 GREENWOOD FIELDS DR
Spacious Cape Cod Home in Greenwood Fields
Asheville, NC 28804



Ample Closet Space



Bright Third Bedroom Upstairs



Large Closet in Second-Level Bedroom



Full Bathroom on Second Level



Large Flex Space in Basement



Great Space to Gather



Ready for Board Games and Movie Room!



Also Great Storage for Bikes and Kayaks

24 GREENWOOD FIELDS DR
Spacious Cape Cod Home in Greenwood Fields
Asheville, NC 28804



Thoughtful Neighborhood Design



Fully Fenced Back Yard for Furry Friends



Back Deck Is Great for Outdoor Dining



Three Levels of Functional Living Space



Extra Off-Street Parking in Driveway



Welcome to Greenwood Fields!



Lovely Neighborhood, Nestled in the Western North Carolina Mountains

Excellent opportunity to live and play in the conveniently located neighborhood of Greenwood Fields — a lovely enclave nestled in the Western North Carolina mountains, featuring great streets for walking, biking, and mingling with the neighbors. This well-maintained home is minutes from both North Asheville and Weaverville amenities, and close to downtown Asheville's thriving dining and entertainment. Lots of outdoor living includes the expansive covered front porch, sunny back deck, and fully fenced back yard. Enjoy three levels of functional living space that includes a bright primary suite, gourmet kitchen, spacious living room, and large flex space in the basement with plenty of possibilities. Space to entertain and relax on the main level, plus three bedrooms and two full bathrooms on the second level. Finished, walk-out basement with powder room and adjacent one-car attached garage for tool and toy storage. See brochure for details.



For more information, please contact:

HOLLY ARACICH

828.335.0688

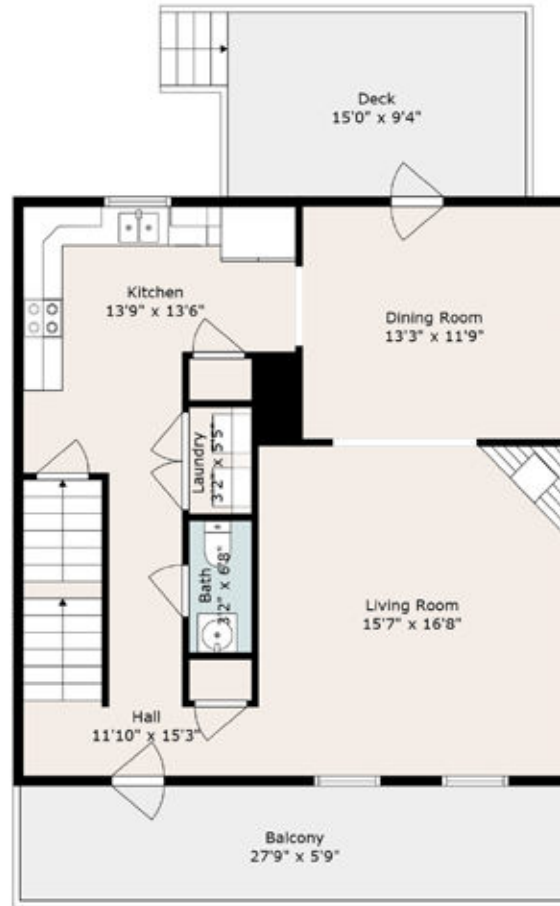
HOLLY@MYMOSAICREALTY.COM

DIRECTIONS

FROM DOWNTOWN ASHEVILLE: Take I-240 to I-26W toward Weaverville. Take Exit 23 (Woodfin/N AVL/Merrimon). Turn right at the stop sign on the exit ramp, then take an immediate left onto 25N/Weaverville Road. Turn left onto Old Marshall Highway. Turn left onto Greenwood Fields Drive. 24 Greenwood Fields Drive is on the left. Sign in the yard



Basement



Main Level



Second Level

FLOOR PLANS



MOSAIC
COMMUNITY LIFESTYLE REALTY

60 Biltmore Avenue, Asheville, NC 28801 tel : 828.707.9556 fax: 800.553.1491

WWW.MYMOSAICREALTY.COM