



MOSAIC
COMMUNITY LIFESTYLE
REALTY

MOUNTAIN VIEWS!



20 GRANDVIEW DRIVE | ASHEVILLE, NC 28806

20 GRANDVIEW DRIVE
ASHEVILLE, NC 28806



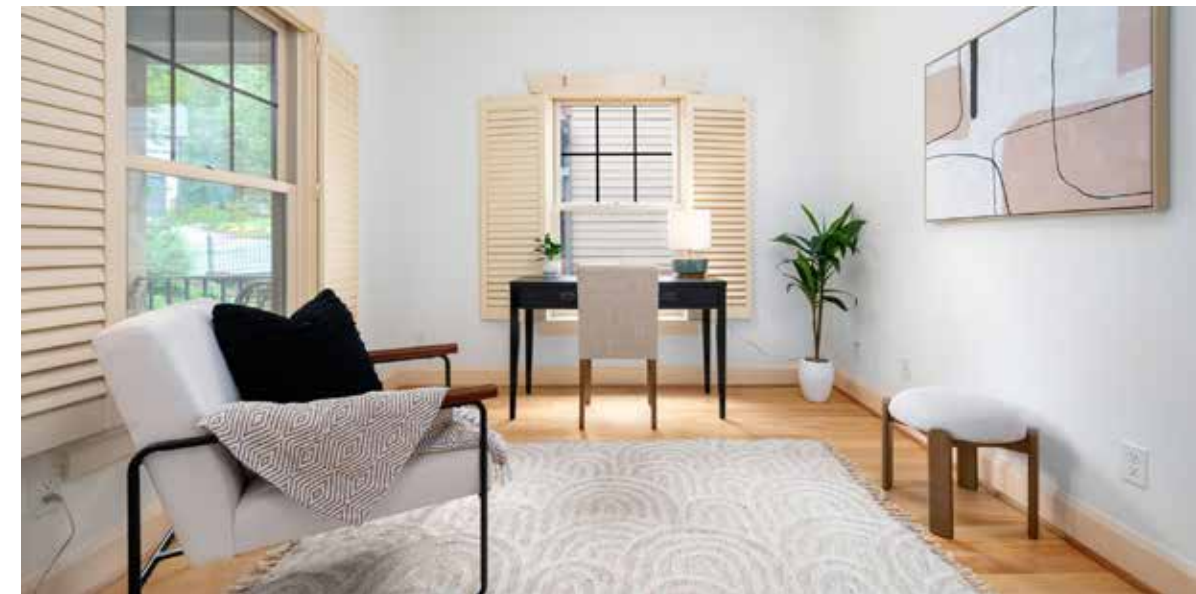
MOUNTAIN VIEWS!



STUNNING 180° VIEWS OF THE RIVER ARTS DISTRICT, DOWNTOWN

Enjoy the best of West Asheville in this modern Arts and Crafts home with stunning 180° views of the River Arts District and downtown Asheville—featuring an open floor plan with an abundance of natural light. The kitchen features a center island with a veggie sink, a beverage fridge, a newer stainless steel refrigerator, lots of cabinets, and expansive countertops. Cozy living room with gas fireplace, custom tile surround, and easy access to a large back porch that's perfect for relaxing, entertaining or watching the sunrise. Tons of flex space, with a main-level office/bonus room, three bedrooms—including the spacious primary suite with impressive views—and laundry upstairs. Recent updates include a back deck, lighting, fresh interior paint and a water heater. Just a short walk or bike ride to breweries, restaurants, the RAD and the Greenway! Easy access to Biltmore Village and I-40/I-240/I-26. Don't miss this special home on a very quiet street, only a mile to New Belgium Brewery.

3 BEDS | 2.5 BATHS | 1,650 SF | 0.18 ACRE | MLS #4254983



LEANN BOUND
828-713-2316
LEANN@MYMOSAICREALTY.COM

20 GRANDVIEW DRIVE

ASHEVILLE, NC 28806



20 GRANDVIEW DRIVE | ASHEVILLE, NC 28806

3 BEDS | 2.5 BATHS | 1,650 SF | 0.18 ACRE | MLS #4254983

FEATURES

- New interior paint
- New water heater
- New decking and porch paint
- New kitchen lighting

AMENITIES (LESS THAN A MILE AWAY)

- River Arts District
- New Belgium Brewery
- French Broad Park and Dog Park
- French Broad Greenway
- Amboy Park Park
- Taco Bily
- Hole Doughnut
- Owl Bakery

OTHER NEARBY AMENITIES

- Downtown Asheville, 2.0 miles
- Whole Foods, 2.1 miles
- Biltmore House, 2.5 miles
- Grove Park Inn, 3.5 miles

DRIVING DIRECTIONS

FROM DOWNTOWN ASHEVILLE: From I-240, head east on Haywood Road. Continue straight on Beverly Road W to the right onto Riverview, then turn left onto Grandview. From downtown, take Clingman Avenue south to Haywood Road. Left on Beverly Road W; right on Riverview; left on Grandview.



20 GRANDVIEW DRIVE | ASHEVILLE, NC 28806

3 BEDS | 2.5 BATHS | 1,650 SF | 0.18 ACRE | MLS #4254983

MAIN LEVEL



20 GRANDVIEW DRIVE | ASHEVILLE, NC 28806

3 BEDS | 2.5 BATHS | 1,650 SF | 0.18 ACRE | MLS #4254983

UPPER LEVEL

