



MOSAIC
COMMUNITY LIFESTYLE
REALTY

KENILWORTH



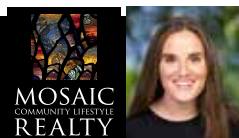
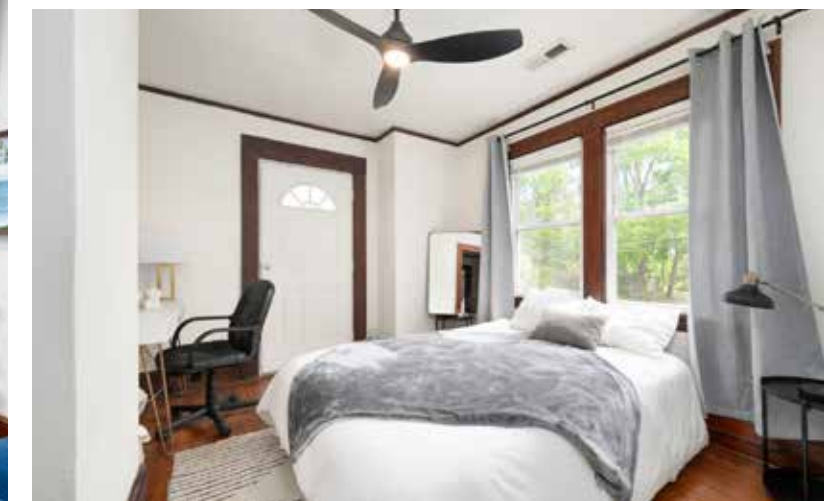
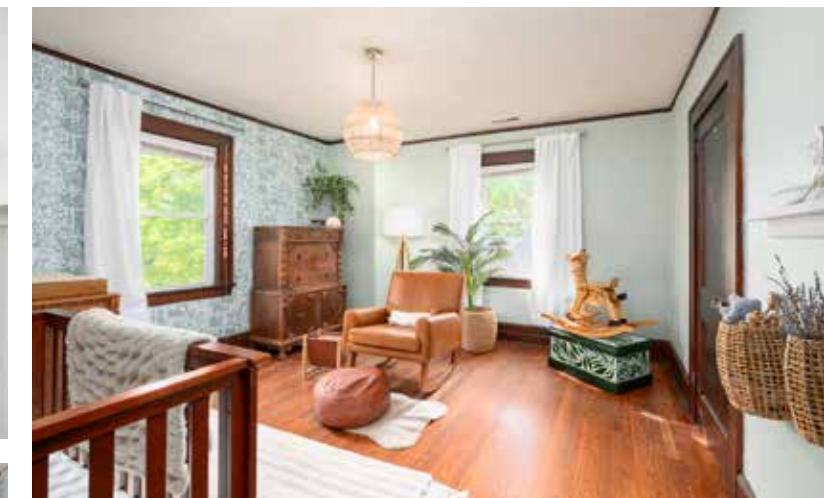
84 FOREST HILL DRIVE | ASHEVILLE, NC 28803



CLASSIC CHARM MEETS UNBEATABLE CONVENIENCE

... in this spacious 5 BR/2.5 BA home in Asheville's historic Kenilworth neighborhood. Its central location is just minutes from downtown, Biltmore Village, Mission Hospital, Asheville High, and AB Tech. Less than a mile from the Biltmore Estate entrance and its miles of hiking and biking trails, fine dining, and winery. Original hardwood floors, beautiful carpentry, and a wood-burning fireplace bring warmth and character throughout. Home features updated baths, abundant closet space, basement storage, and updated lighting fixtures. The covered side porch is perfect for morning coffee or entertaining friends, while the level, 0.17-acre lot features a fenced backyard, a garden shed, ample parking, and potential space for an ADU or garage (buyer to verify). Architect renderings available for a future primary suite. With five bedrooms, you'll have plenty of space for living and working from home.

5 BEDROOMS | 2.5 BATHROOMS | 2,347 SF | 0.17 ACRE



MEGAN SHOOK
828-450-6797
MEGAN@MYMOSAICREALTY.COM

84 FOREST HILL DRIVE

ASHEVILLE, NC 28803



84 FOREST HILL DRIVE | ASHEVILLE, NC 28803

5 BEDROOMS | 2.5 BATHROOMS | 2,347 SF | 0.17 ACRE

FEATURES

- Charming and spacious home on large, level lot in Kenilworth, Asheville's convenient and historic neighborhood centrally located just south of downtown
- Minutes to all that downtown Asheville and Biltmore Village have to offer, including restaurants, art galleries, Asheville Tourists baseball, and music venues
- Less than one mile to the entrance of the Biltmore Estate and all of the amenities that it offers to annual pass holders (on approximately 8,000 acres with miles and miles of hiking and biking trails, restaurants, winery, etc.)
- Located steps from Mission Hospital and other medical offices as well as Asheville High School and A-B Tech Community College; very convenient location for work or school
- Five-bedroom, 2.5-bath home—plenty of space for living and working from home
- Original features include beautiful hardwood floors and carpentry, plus a wood-burning fireplace in the living room
- Find the perfect spot for unwinding on the covered side porch, just off the living room; host your friends for dinner or relax in the mornings with your coffee
- Bathrooms are updated and charming
- Plenty of parking space in the back; 0.17-acre, level lot with space to build ADU or garage (buyer to verify)
- Abundance of closet space throughout home; extra storage in large basement
- Sellers have architectural renderings for creating an upstairs primary suite
- Backyard includes a fully fenced area for furry friends; garden shed for storage
- Tankless Rinnai water heater (natural gas), updated lighting fixtures throughout
- Laundry on main level with stackables in kitchen—all appliances will convey
- Asheville City Schools district

DIRECTIONS

FROM DOWNTOWN ASHEVILLE: Take Biltmore Avenue south. Turn left on Forest Hill Drive—home will be on your left.



84 FOREST HILL DRIVE | ASHEVILLE, NC 28803

5 BEDROOMS | 2.5 BATHROOMS | 2,347 SF | 0.17 ACRE

MAIN LEVEL



84 FOREST HILL DRIVE | ASHEVILLE, NC 28803

5 BEDROOMS | 2.5 BATHROOMS | 2,347 SF | 0.17 ACRE

UPPER LEVEL



BASEMENT

