



47 FINALEE AVENUE

Beautiful, Brand-New Home in Kenilworth by JAG Construction



MOSAIC
COMMUNITY LIFESTYLE REALTY

4 Bedrooms, 3.5 Bathrooms
2,732 SF • 0.15 Acre
MLS #4127711



INFO

47 Finalee Avenue

Asheville, NC 28803

4 Bedrooms, 3.5 Bathrooms

2,732 SF • 0.15 Acre

Main: 1,232 SF • Upper: 624 SF • Basement: 876 SF

MLS #4127711

FEATURES

- Brand-new, GreenBuilt/Energy Star Arts and Crafts home by JAG Construction in Kenilworth — one of Asheville's oldest and most established neighborhoods
- Centrally located — close to Biltmore Estate and Village, Mission Hospital, and mere minutes to thriving downtown Asheville
- Lots of outdoor living — treetop and winter mountain views from two expansive decks
- Open, flowing floor plan with oversized windows for an abundance of natural light
- Well-appointed with white oak and tile on the main floor and second level, and polished concrete floors in the basement
- Abundant outdoor living includes a covered front porch with a beautiful tongue-and-groove ceiling, a spacious back deck with treetop views, and a covered lower-level deck for gathering with friends and family
- Inviting foyer with coat closet and mudroom access for garment storage; mudroom connects garage with main-level foyer
- Bright living room with shiplap-surround electric fireplace and back deck access; sunny deck with wooded and winter views, perfect for alfresco dining



Covered, Lower-Level Deck with Winter Mountain Views

- Modern chef's kitchen features leathered granite + black walnut countertops, stainless steel appliances, herringbone tile backsplash, soft-close drawers and cabinets, and a pantry
- Large kitchen island with breakfast bar opens to dining area
- Spacious primary suite on main features private back deck access, a walk-in closet with custom wood shelving, and an ensuite full bathroom that includes a quartz-topped double vanity, tiled walk-in shower, a soaking tub, and a linen closet
- Powder room, laundry/mudroom and extra storage closet on main level
- Upstairs landing with display nook gets great natural light
- Two bedrooms, one full bathroom, and linen closet on second level
- Bedroom with walk-in closet
- Second-level full bathroom features a double vanity with quartz countertops, tiled shower + tub, and a linen closet

FEATURES (CONTINUED)

- Finished basement includes a second bedroom suite, large living room, laundry room, spacious utility room, and lots of extra storage
- Oversized, one-car garage with easy main level access, and space for tool + toy storage
- Professionally landscaped yard boasts thoughtful design, new native trees and shrubs, big-boulder steps, and fresh mulch

GREEN FEATURES

- GreenBuilt NC and Energy Star Certified
- Formaldehyde-free insulation in walls and 6" of spray foam insulation in the ceilings and bands
- Superior Walls® foundation (precast concrete with metal studs and rigid insulation)
- Air sealed
- No-VOC paints and adhesives
- Energy Star windows, appliances and lighting
- Multitude of windows for lots of natural light (daylighting)
- Fresh air introduction + ductwork sealed and tested
- Low-flow toilets and fixtures
- Durable materials: Nichiha cement board lap siding and an architectural shingle roof
- Infill development
- Native, drought-tolerant landscaping includes boulder landscape stones
- Local and regional material use
- Living Wage Certified builder



Bespoke Details and Craftsmanship



Gorgeous Black Walnut Countertop



Spacious Living Room Gets Great Natural Light



Space for Entertaining



Back Deck Access from the Living Area



Electric Fireplace with Shiplap Surround



Open, Flowing Floor Plan



Dining Area off of Kitchen



Modern Chef's Kitchen Features Leathered Granite and Stainless Steel



Herringbone Tile Backsplash



Lots of Cabinet and Countertop Space



Thoughtful and Sustainable Design



Inviting Foyer with Powder Room and Pantry off Kitchen



Mud Room for Garment Storage



Bright Primary Suite



Treetop Views and Lots of Light



Ensuite Bathroom: Tiled, Walk-in Shower, Linen Closet



Quartz-Topped Double Vanity



Walk-in Closet



Powder Room near Foyer on Main Level



Second-Level Bedroom



Upstairs Landing with Display Nook



Hallway Connects Two Bedrooms, Bath and Linen Closet



Third Spacious Bedroom



Full Bathroom on Second Level

47 FINALEE AVENUE
Brand-New Green Home in Kenilworth
Asheville, NC 28803



Basement Features Polished Concrete Floors and Covered Deck Access



Second Suite with Back Deck Access



Full Bathroom in Basement



Second Laundry Room



Bright Garage Leads to Foyer



Oversized One-Car Garage



Professionally Landscaped Yard Frames Covered Front Porch



Perfect for Relaxing



Sunny Back Deck ...



... Is Perfect for Gatherings



Excellent Curb Appeal and Lush Landscaping

Beautiful, brand-new, GreenBuilt and Energy Star home by JAG Construction in popular Kenilworth boasts seasonal mountain views and overlooks Biltmore Village. Open, flowing plan combines with oversized windows to give this home a bright, airy and inviting feel. Modern chef's kitchen features leathered granite + black walnut mahogany counters, stainless appliances, and herringbone tile backsplash. Large island with breakfast bar opens to dining and living areas. Sunny back deck is perfect for dining and entertaining. Spacious primary suite on main features a private back deck, a walk-in closet, and an ensuite bathroom with a quartz double vanity and tiled walk-in shower. The second level offers two bedrooms, a bathroom, and a linen closet. The finished basement has a second bedroom suite, second living area, and lots of extra storage. Enjoy outdoor living from the covered front porch and two large back decks. Low-maintenance and durable materials.



For more information, please contact:

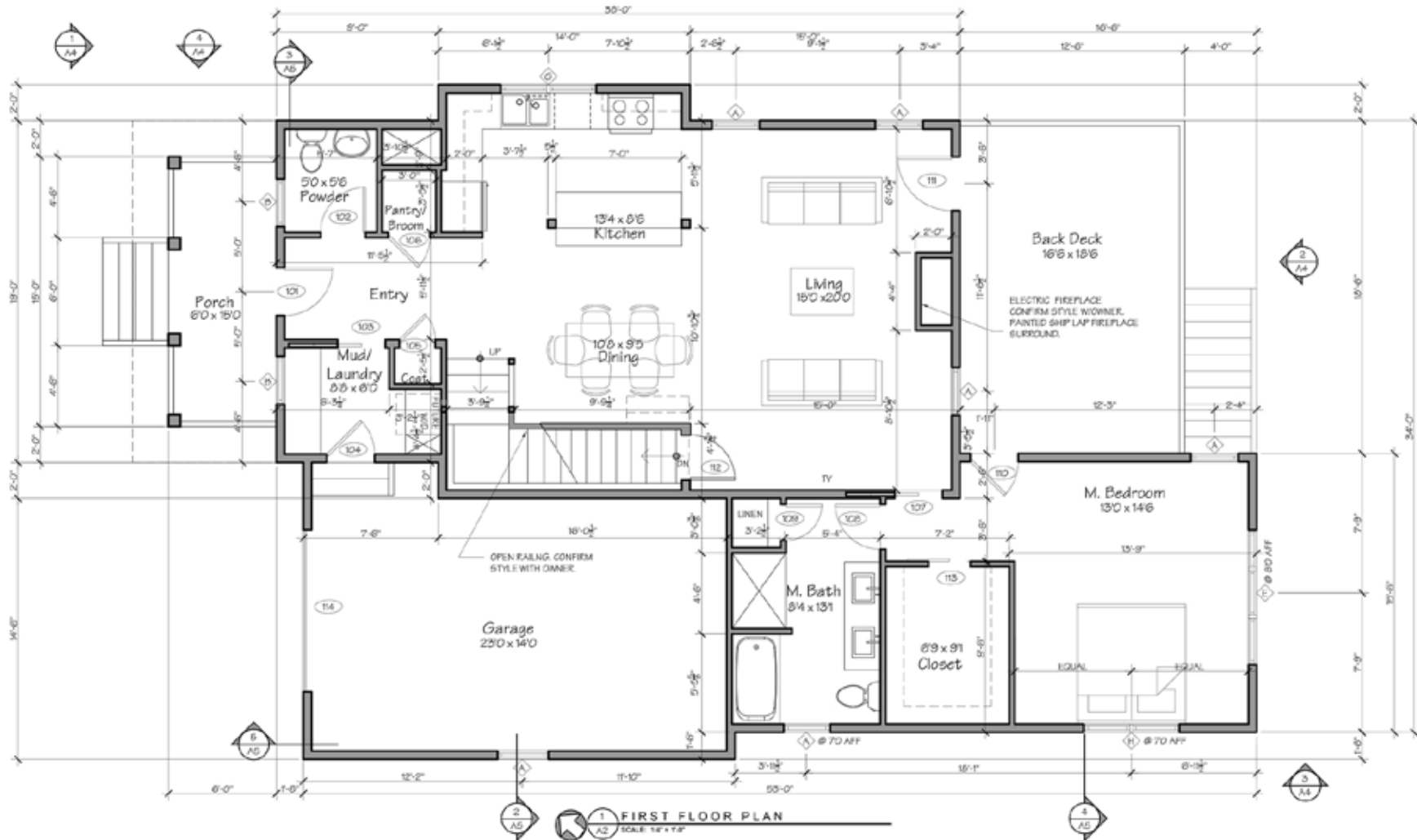
MIKE FIGURA

828.337.8190

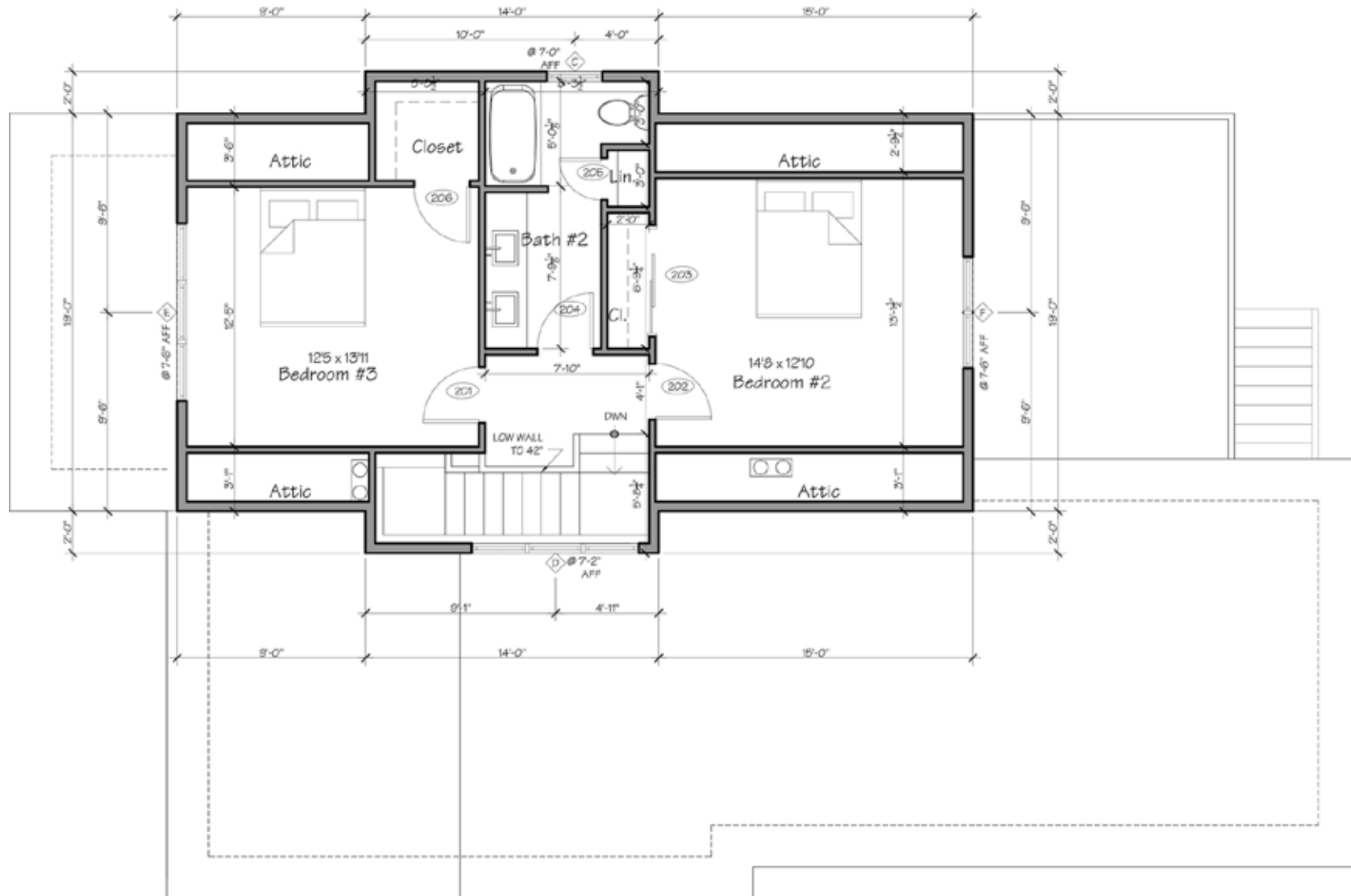
MIKE@MYMOSAICREALTY.COM

DIRECTIONS

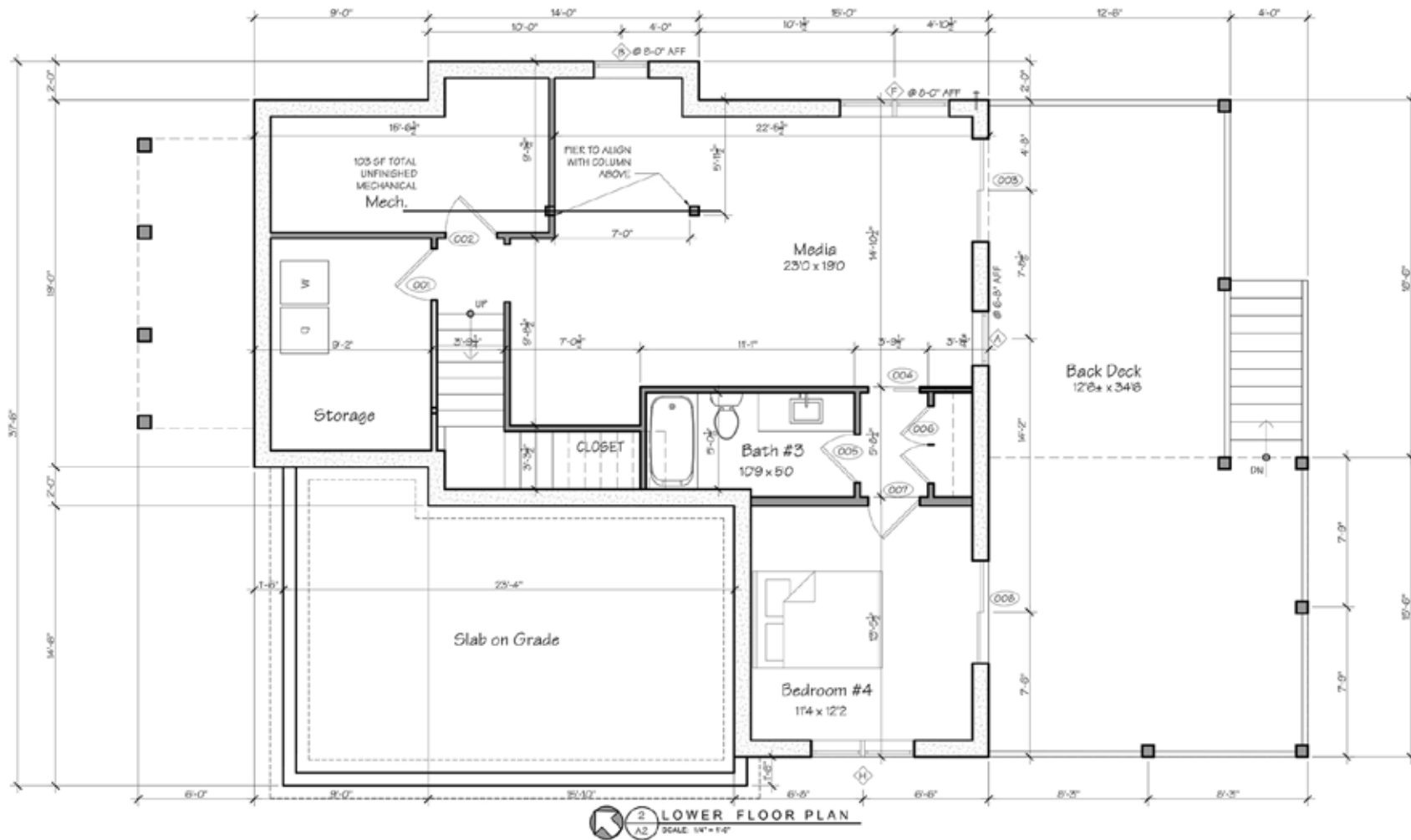
FROM DOWNTOWN ASHEVILLE: Take Biltmore Avenue south. Turn left onto Kenilwood Place. Turn left on Finalee Avenue. 47 Finalee is on the right. Sign in yard.



MAIN LEVEL



UPPER LEVEL



BASEMENT LEVEL