



104 ESTELLE PARK DRIVE

Move-in-Ready West Asheville Cottage



MOSAIC
COMMUNITY LIFESTYLE REALTY

3 Bedrooms, 2 Bathrooms
1,366 SF • 0.16 Acre
MLS #4329863



**104 ESTELLE PARK DRIVE
ASHEVILLE, NC 28806**

3 Bedrooms, 2 Bathrooms
1,366 SF · 0.16 Acre
MLS #4329863

FEATURES

Classic **West Asheville** Cottage

Convenient location—close to fire department, schools, and library

Good flow and **open floor plan**

All-new: Interior paint, porch stairs and railings (front and Side), kitchen door, and bedroom carpets

Kitchen features:

- » Brand-new **stainless steel HiSense refrigerator**
- » **Granite countertops** with breakfast bar seating
- » **General Electric stove, built-in microwave, and dishwasher**
- » **Ample wood cabinetry**
- » **Stainless steel double sink**
- » **Spacious pantry**
- » **Recessed lighting**

Laundry closet off of kitchen

Wood floors throughout main living spaces

Attic storage



Three **spacious bedrooms** and two **full bathrooms**

Primary suite bathroom has a tub/shower combo

Ceramic tile bathrooms

Cozy front porch

Neutral color palette

Beautiful, low-maintenance, **mature landscaping**

Lovely perennials

Friendly neighborhood, welcoming and walkable

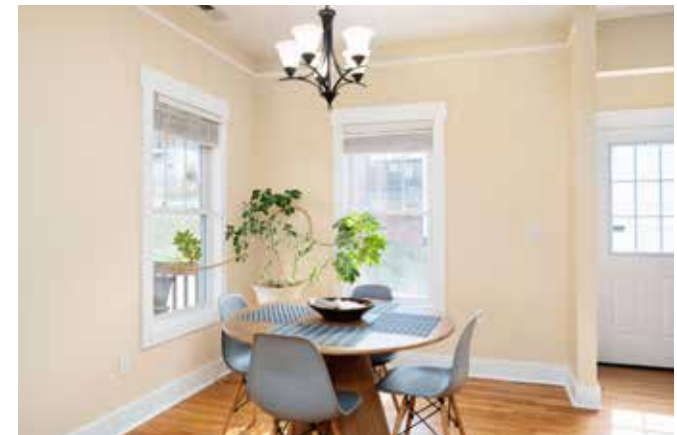
Common area playground in community

County taxes; city water



MOSAIC
COMMUNITY LIFESTYLE REALTY

46 Orchard Street, Suite 100, Asheville, NC 28801
WWW.MYMOSAICREALTY.COM







The perfect blend of charm, comfort and convenience in the mid-\$400s. Adorable, charming and refreshed, this low-maintenance, move-in-ready West Asheville home has a great-flowing, one-level living floor plan and a great location—close to schools, a library, the fire department, and only 10 minutes to downtown Asheville. Community playground. Fresh interior paint and brand-new carpeting throughout. With a gas fireplace in the living room and a welcoming front porch, you have your choice of ideal spots for winding down at the end of the day or having your morning coffee. Located 5 minutes from Haywood Road's vibrant shops and restaurants, too! SELLER IS OFFERING A \$5,000 EXTERIOR PAINTING ALLOWANCE WITH ACCEPTABLE OFFER AT CLOSING.



For more information, please contact:

LAURA MOYE
828-301-4518

LAURA@MYMOSAICREALTY.COM

DRIVING DIRECTIONS

FROM DOWNTOWN ASHEVILLE: Take I-240 W to Exit 3A, Patton Avenue. Go 2.5 miles to light. Right on Johnston Blvd. Go 1 mile to Estelle Park Drive—turn right across from Johnston Elementary School. Home will be on the left.



FLOOR PLAN