



MOSAIC
COMMUNITY LIFESTYLE
REALTY

ELK MOUNTAIN ESTATES



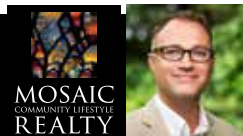
17 ELK TRAIL | ASHEVILLE, NC 28804



CUSTOM-BUILT 2021 HOME ON A 10-ACRE DOUBLE LOT

Built in 2021 by Mountain Sound Builders, this exceptional home in Elk Mountain Estates offers spectacular, year-round, long-range mountain views. Open-concept kitchen features a large island, high-end appliances, and flows into a living room with a wood-burning fireplace (currently using gas logs). Enjoy a three-season screened porch with its own fireplace, Azek TimberTech decking, and premium finishes throughout—6" engineered hardwoods, radiant floor heating, custom closets, roller shades, and built-ins. Energy features include solar panels, a 48kw Generac generator, tankless water heater, and an EV hookup with Tesla battery. Detached, heated garage fits 3 vehicles (5 total, including attached garage), with custom shop space below. Additional perks: standing seam metal roof, fiber internet, whole-house filtration, central vac, Sonos sound, and epoxied floors. This meticulously landscaped private mountain retreat has unmatched quality. A must-see place!

5 BD | 5.5 BA | 2 GARAGES | 5,719 SF | 10 ACRES | MLS #4291429



ERIC ALBEE
828-712-9395
ERIC@MYMOSAICREALTY.COM

17 ELK TRAIL

ASHEVILLE, NC 28804



17 ELK TRAIL | ASHEVILLE, NC 28804

5 BEDS | 5.5 BATHS | 2 GARAGES | 5,719 SF | 10 ACRES | MLS #4291429

FEATURES

- Custom built in 2021 by Mountain Sound Builders; designed by local architect Thomas Czyzyk
- Year-round, long-range mountain views
- 10-acre double lot in the Elk Mountain Estates neighborhood
- Open-concept kitchen features a large island and high-end appliances
- Three-season screened porch with wood-burning fireplace
- Azek TimberTech composite decking
- Wood-burning fireplace in living room currently has a gas log insert
- Home and detached garage both feature solar panels
- Radiant floor heating in bathrooms, laundry room, mudroom and basement
- Roller shades and custom window treatments throughout
- Rooms feature custom closets and built-ins
- Fiber optic internet
- 20-gallon-per-minute well with whole-house filtration system and water softener
- Generac 48kw whole-house generator
- Six-inch wide engineered hardwood floors
- Epoxied garage and basement floors
- Standing seam metal roof
- Tankless Rinnai hot water heater
- Sonos speakers in kitchen, living area, porch and basement living area
- Boral vertical composite siding
- Hide-a-hose central vacuum throughout the home
- Heated, detached garage powered by solar; has EV hookup with Tesla solar battery
- The lower portion of detached garage has custom workbench, air compressor, and a Slatwall organization system
- Five indoor garage spaces (two in attached garage; three in detached garage)
- Yard features extensive landscaping, a stone fire pit with Breco insert, landscape lighting, 48" high aluminum fence and underground DogWatch fence
- Home repainted in 2025

DIRECTIONS

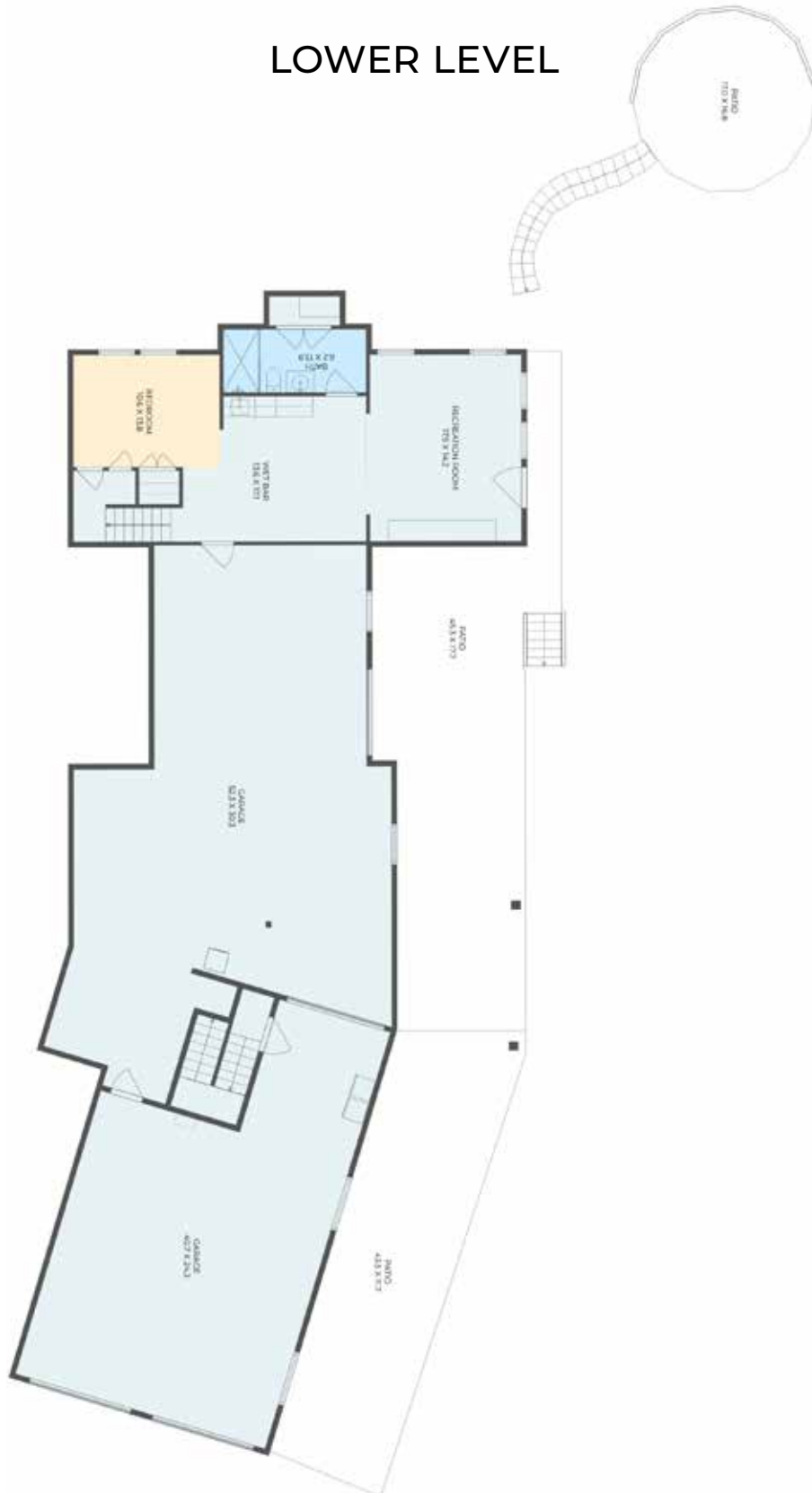
GPS and map apps will accurately guide you to the property.



17 ELK TRAIL | ASHEVILLE, NC 28804

5 BEDS | 5.5 BATHS | 2 GARAGES | 5,719 SF | 10 ACRES | MLS #4291429

LOWER LEVEL



17 ELK TRAIL | ASHEVILLE, NC 28804

5 BEDS | 5.5 BATHS | 2 GARAGES | 5,719 SF | 10 ACRES | MLS #4291429

MAIN LEVEL



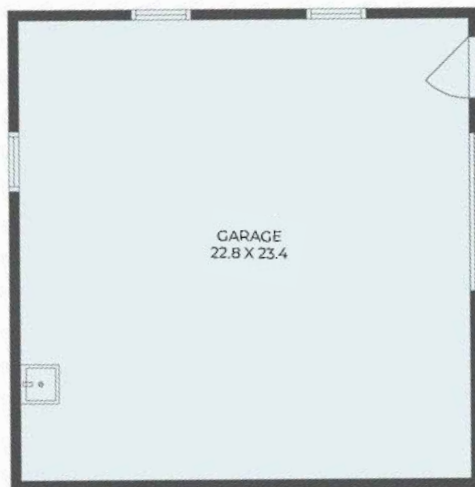
17 ELK TRAIL | ASHEVILLE, NC 28804

5 BEDS | 5.5 BATHS | 2 GARAGES | 5,719 SF | 10 ACRES | MLS #4291429

UPPER LEVEL



DETACHED GARAGE



LOWER LEVEL



UPPER LEVEL

17 ELK TRAIL | ASHEVILLE, NC 28804

5 BEDS | 5.5 BATHS | 2 GARAGES | 5,719 SF | 10 ACRES | MLS #4291429

LOWER-LEVEL GUEST SUITE



17 ELK TRAIL | ASHEVILLE, NC 28804

5 BEDS | 5.5 BATHS | 2 GARAGES | 5,719 SF | 10 ACRES | MLS #4291429

ADDITIONAL SPACES AND FEATURES

