



MOSAIC
COMMUNITY LIFESTYLE
REALTY

LAKEVIEW PARK



76 EDGELAWN ROAD | ASHEVILLE, NC 28804

76 EDGELAWN ROAD
ASHEVILLE, NC 28804



LAKEVIEW PARK



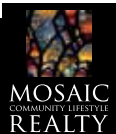
ARTS & CRAFTS SHOWPIECE IN LAKEVIEW PARK

Meticulously designed and completely rebuilt (from the foundation up) in 2012, this Arts and Crafts showpiece in Lakeview Park flawlessly pairs timeless character with modern luxury. The home commands a prime location on a 0.37-acre lot, situated just two blocks from Beaver Lake and steps from the first hole of the Asheville Country Club. A welcoming foyer introduces an open floor plan with hardwood floors and 10-foot ceilings. The bright, airy living room serves as the heart of the home, featuring large picture windows and a wood-burning fireplace with a stone surround that flows effortlessly into the dining room and chef's kitchen. The main floor also features a private primary bedroom with a spa-like ensuite bath. Upstairs, the handsomely designed library stands out with a gas-fueled stone fireplace, rich birch and poplar paneling, and a window seat overlooking the front yard. For premier outdoor living, the oversized screened porch, complete with Trex decking and a cathedral ceiling, flows onto an open-air patio overlooking the backyard oasis. Enjoy hot summer days by the luxurious pool, tend to the raised garden beds, or appreciate the convenience of being minutes from downtown Asheville.

3 BEDROOMS | 2 BATHS | 3 HALF BATHS | 2,871 SF | 0.37 ACRE



TRAVIS PRICE
828-242-4151
TRAVIS@MYMOSAICREALTY.COM



TRIP HOWELL
828-450-4792
TRIP@MYMOSAICREALTY.COM

76 EDGELAWN ROAD

ASHEVILLE, NC 28804



76 EDGELAWN ROAD | ASHEVILLE, NC 28804

3 BEDS | 2 FULL + 3 HALF BATHS | 2,871 SF | 0.37 ACRE

FEATURES

Striking the perfect balance between timeless charm and modern luxury, this stunning Lakeview Park home was completely rebuilt from the foundation up in 2012. Showcasing an Arts and Crafts-inspired design, the residence offers a seamless blend of period-correct character and contemporary amenities. Situated on a beautifully manicured 0.37-acre lot, just two blocks from Beaver Lake and steps from hole #1 of the Asheville Country Club, this home boasts exceptional curb appeal, featuring rich greenery, a classic pebbledash-and-stone exterior, and a prominent covered entryway.

MAIN LIVING

A welcoming foyer invites you into a beautifully flowing floor plan highlighted by rich hardwood floors, custom built-ins, and elegant 10-foot ceilings throughout. The bright and airy living room serves as the heart of the home, featuring huge picture windows and a wood-burning fireplace with a timeless stone surround that adds instant warmth. Transitioning effortlessly, the living room opens directly into the dining room, creating an open-concept flow, creating a seamless environment for both everyday living and formal entertaining.

ELEGANT EAT-IN KITCHEN

Outfitted with high-end wood cabinets, glass-front doors, granite countertops, an island, and a vented gas range, it also features a double-door pantry and a two-person breakfast bar. The adjacent casual dining area includes a custom built-in banquette nestled beneath oversized windows overlooking the pool. A wall-mounted, arched gas fireplace with a floor-to-ceiling brick surround creates coziness, while a window over the sink offers views of the backyard oasis. A side door provides easy access to the decking and driveway.

OUTDOOR LIVING & RELAXATION

Dining room French doors open to the oversized screened-in porch, beautifully crafted with Trex decking, a dramatic cathedral ceiling, warm wood paneling, and a ceiling fan. This comfortable retreat flows directly onto an open-air patio overlooking the backyard oasis. Here, the level, fully landscaped yard offers raised garden beds, room for play, and a luxurious fenced-in pool, creating an incredible indoor-outdoor setup perfect for hot summer days or entertaining guests.

MAIN-LEVEL PRIMARY SUITE

Positioned as a desirable corner room, the primary suite is a spacious, light-filled sanctuary that offers a serene sense of privacy. The elegant bathroom is a spa-like retreat, boasting heated tile floors, a deep soaking tub with a custom tile surround, and a beautifully tiled walk-in shower. A large double vanity with granite countertops includes a dedicated makeup station and ample storage, while a generous walk-in closet completes this sophisticated main-floor haven.

SECOND FLOOR

A mix of a cozy retreat and guest quarters, the second floor offers two bedrooms, a full bathroom, and an additional half bathroom providing the perfect space for guests and family. Bedrooms offer large closets and oversized windows with seasonal views. Step down the hall to the handsomely designed and welcoming library centered by a stone surround gas fireplace, birch and popular wood paneling, custom built-ins, a cozy window seat overlooking the front yard and golf course, a space for your poker or mahjong nights.



76 EDGELAWN ROAD | ASHEVILLE, NC 28804

3 BEDS | 2 FULL + 3 HALF BATHS | 2,871 SF | 0.37 ACRE

ADDITIONAL HIGHLIGHTS

- Laundry room with sink, storage, and desk area; granite counters, wooden cabinets
- Abundant storage throughout—including carpeted, climate-controlled closets off of the library, multiple linen closets, pull-down stair access to the attic, and more
- Convenient half bathrooms on every level
- Basement offers ample dry storage, room for a second refrigerator, and double doors to backyard
- Drive winds around home and leads to garage
- Two-car garage with room for a shop area
- Whole-house generator
- On-demand water heater
- Epoxy-coated garage floors
- Compacted aggregate driveway was recently re-sealed

DRIVING DIRECTIONS

FROM DOWNTOWN ASHEVILLE: From US-25 N/Merrimon Ave at E Chestnut Street (Harris Teeter & Trader Joe's), continue for 2.4 miles. Across from Beaver Lake Bird Sanctuary, turn right onto Midland Drive. Make a slight right to stay on Midland, then continue straight onto Edgelawn Road. The home will be on the left.



76 EDGELAWN ROAD | ASHEVILLE, NC 28804

3 BEDS | 2 FULL + 3 HALF BATHS | 2,871 SF | 0.37 ACRE

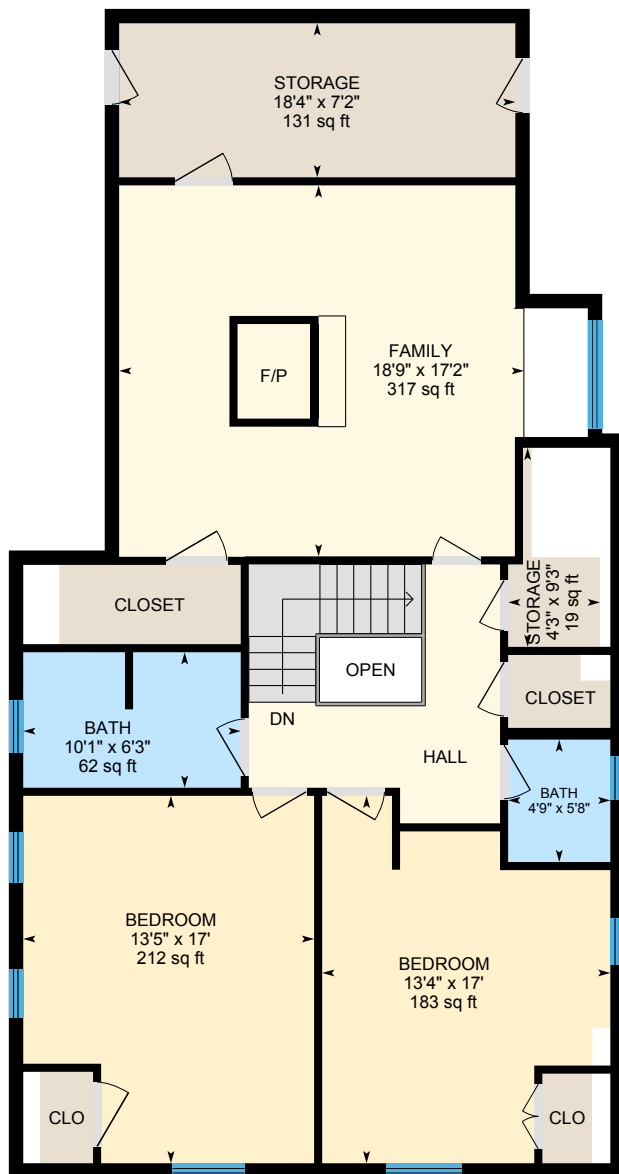
MAIN LEVEL



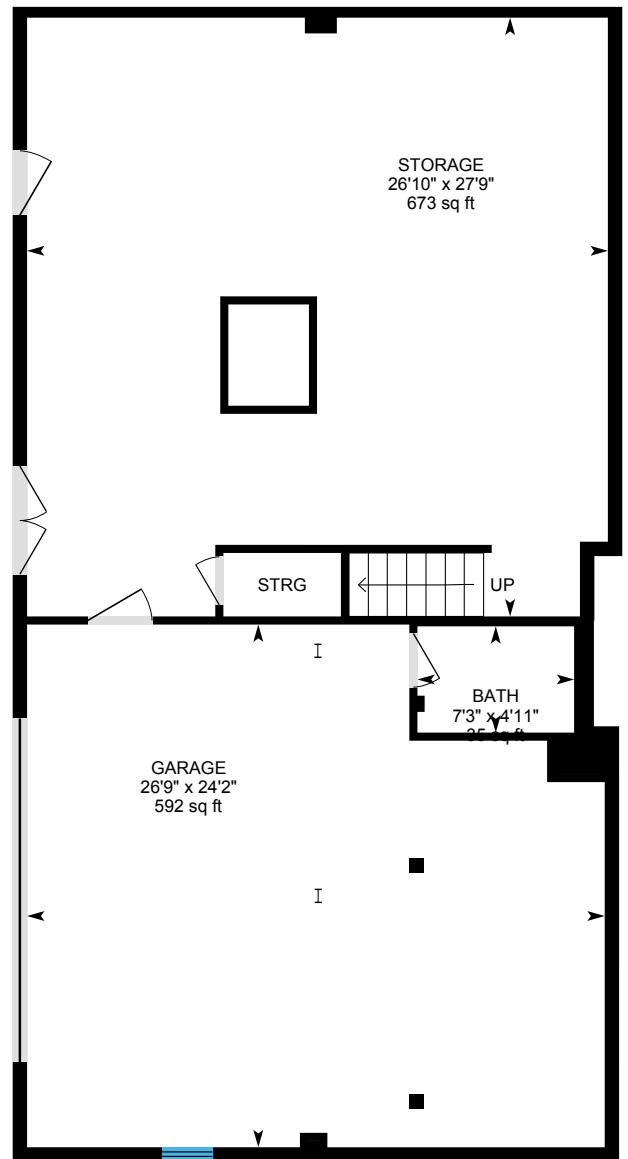
76 EDGELAWN ROAD | ASHEVILLE, NC 28804

3 BEDS | 2 FULL + 3 HALF BATHS | 2,871 SF | 0.37 ACRE

UPPER & LOWER LEVELS



UPPER LEVEL



LOWER LEVEL