



351 DIX CREEK ROAD #2

Renovated, One-Level Cottage in a Pastoral Setting | Leicester



MOSAIC
COMMUNITY LIFESTYLE REALTY

2 Bedrooms, 2 Bathrooms
1,070 SF • 0.47 Acre
MLS #4312462



351 DIX CREEK ROAD #2 LEICESTER, NC 28748

2 Bedrooms, 2 Bathrooms
1,070 SF · 0.47 Acre
MLS #4312462

FEATURES

CHARMING HOME AND STUNNING SETTING

Renovated cottage brimming with **curb appeal and charm**

Enjoy a **pastoral setting with mountain views**

Relax on the **covered front porch**, perfect for taking in the beautiful surroundings

Low-maintenance **fiber cement siding**

Located on a **spacious .047-acre lot**, offering great space for gardening, recreation, and pets

Includes a **storage shed** for all your garden supplies and tools

MODERN AND OPEN INTERIOR

Offering the **ease and convenience of one-level living**

Open floor plan with a **vaulted ceiling** in the living area

Easy-maintenance **plank flooring** throughout the living room, kitchen, and bedrooms

Charming, updated kitchen features beautiful **butcher block counters** and a **custom backsplash**

COMFORTABLE BEDROOMS AND UPDATED BATHS

Spacious primary bedroom boasts an **ensuite bath** and a **walk-in closet**

The **primary bath** features a lovely **subway-tiled, step-in shower**

Nicely appointed guest bath includes a tub and shower

Durable **tile flooring** is found in all bathrooms

IDEAL LOCATION

Quick commute: Just 20 minutes to vibrant downtown Asheville

Convenience at your fingertips: **Grocery stores and other amenities are close by**

Perfect for a full-time home, vacation home or short-term rental





MOSAIC

COMMUNITY LIFESTYLE REALTY

46 Orchard Street, Suite 100, Asheville, NC 28801
WWW.MYMOSAICREALTY.COM





351 DIX CREEK ROAD #2

Renovated, One-Level Cottage

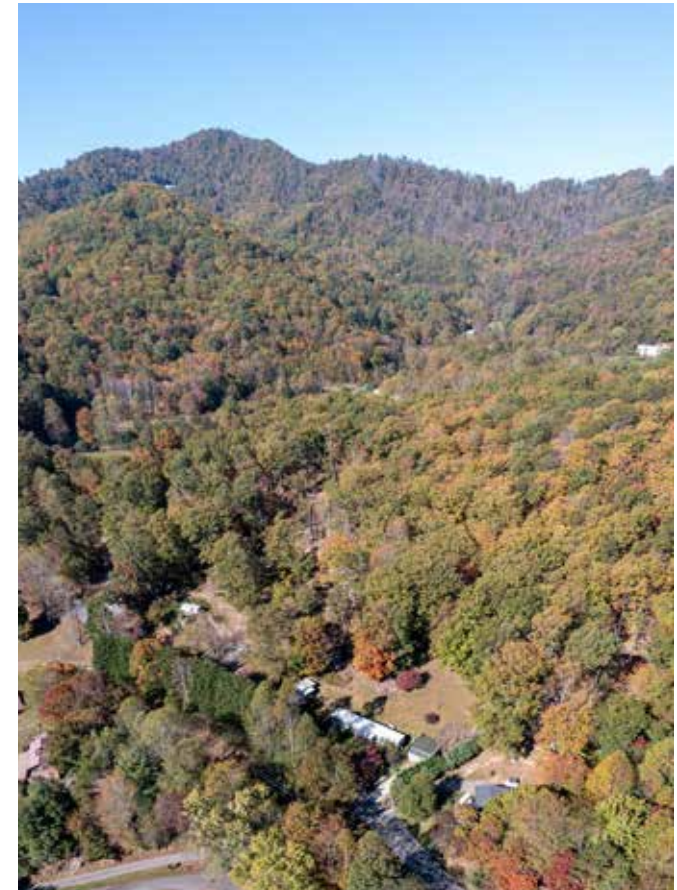
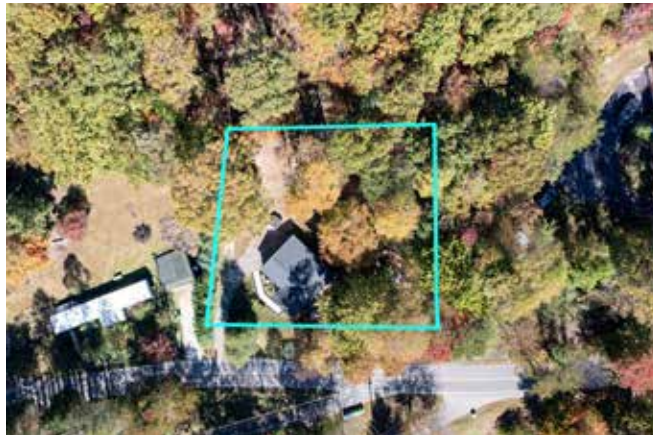
Leicester, NC 28748





MOSAIC
COMMUNITY LIFESTYLE REALTY

46 Orchard Street, Suite 100, Asheville, NC 28801
WWW.MYMOSAICREALTY.COM





Escape to your dream retreat in this renovated one-level cottage, offering a pastoral setting with stunning mountain views, just 20 minutes from downtown Asheville. Overflowing with curb appeal and charm, this home welcomes you with a covered front porch, the perfect spot to enjoy the beautiful surroundings. Inside, the living area features vaulted ceilings and an open floor plan, all complemented by vinyl plank flooring throughout the main living spaces and bedrooms. The charming kitchen is highlighted by butcher block counters, a stylish backsplash and a custom coffee station. Spacious primary bedroom includes an ensuite bathroom featuring a lovely, subway-tiled, step-in shower, and a walk-in closet. A guest bedroom and nicely appointed guest bath with tub and shower complete the ease of main-level living. Outside, enjoy year-round mountain views and plenty of space for pets and gardens. With grocery stores and amenities close by, this gem combines tranquil living with convenience. Perfect for a full-time home, vacation home, or short-term rental.



For more information, please contact:

CAROL MARIN
828-545-2712

CAROL@MYMOSAICREALTY.COM

DIRECTIONS

FROM DOWNTOWN ASHEVILLE: Take Patton Avenue west to the light at New Leicester Highway/NC-63. Turn right onto New Leicester, then left onto Newfound Road. Turn left on Dix Creek Road #2. The home will be on your right after approximately 1.5 miles. Google maps is accurate.

