



1265 DILLINGHAM ROAD

Cozy, Chalet-Style Farmhouse in the Mountains of Barnardsville



MOSAIC
COMMUNITY LIFESTYLE REALTY

1 Bedrooms, 1.5 Bathrooms
1,603 SF • 31.44 Acres
MLS #4316578



1265 DILLINGHAM ROAD BARNARDSVILLE, NC 28709

1 Bedrooms, 1.5 Bathrooms
1,603 SF • 31.44 Acres
MLS #4316578

LOCATION

- Cozy, chalet-style **farmhouse located in the mountains of Barnardsville**
- **31.44 acres of beautiful farmland** with a greenhouse and barn
- **Only half a mile from Big Ivy National Forest** trails and rock climbing
- Miles and miles of **beautiful mountain views**
- **Wood-paneled ceilings, walls, and floors** give the home a rustic feel
- Beautiful wood interior with **amazing attention to detail**
- Kitchen has **eat-in dining, stainless steel appliances, plenty of cabinetry**
- **Large kitchen** with beautiful pine floors is perfect for family gatherings
- **Laundry room** on main level
- **Primary bedroom upstairs** with ensuite half bath
- Upstairs has an **abundance of natural light**
- Gorgeous **pine tongue-and-groove ceilings and floors**
- **Sleeping loft**, open to living room, has lovely views
- **Overlooks the gorgeous valley**
- Tons of **original handcrafted woodworking**



- **Bordered by Dillingham Creek**
- **Upper deck off primary bedroom**; wake up to **gorgeous views**
- **Covered front porch**
- **Back deck with hot tub**
- **Finished outbuilding** has hardwood floors and two twin Murphy beds; no plumbing
- **Large barn** is great for several animals— horses and others!
- **Plenty of fenced pasture** for horses, cows, goats, chickens, etc.— perfect for a mini-farm
- **Greenhouse** for winter planting and starts
- **Enjoy woods above the homesite**



MOSAIC
COMMUNITY LIFESTYLE REALTY

46 Orchard Street, Suite 100, Asheville, NC 28801
WWW.MYMOAICREALTY.COM



1265 DILLINGHAM ROAD

Cozy, Chalet-Style Farmhouse

Barnardsville, NC 28709





1265 DILLINGHAM ROAD

Cozy, Chalet-Style Farmhouse

Barnardsville, NC 28709



MOSAIC
COMMUNITY LIFESTYLE REALTY

46 Orchard Street, Suite 100, Asheville, NC 28801
WWW.MYMOSAICREALTY.COM







MOSAIC
COMMUNITY LIFESTYLE REALTY

46 Orchard Street, Suite 100, Asheville, NC 28801
WWW.MYMOSAICREALTY.COM



This dreamy Barnardsville mountain getaway with 31 acres of pastures and woods awaits you, located just 30 minutes to downtown Asheville and 20 to Weaverville. Nestled on Dillingham Creek and an easy half-mile walk from Big Ivy National Forest trails, you can enjoy all the Blue Ridge Mountains have to offer without getting in a car! This is the perfect property for horse lovers and homesteaders; would also make a unique vacation rental, allowing pets and horses alike! Cozy up in the charming 1910 chalet-style farmhouse with amazing hand-crafted woodwork, stone work, and original charm. Relax and enjoy the views from several porches. Create your dream mini-farm with a barn that has several horse stalls and a hay loft, a greenhouse, and fenced pastures. There is also a one-room outbuilding (no plumbing) with hardwood floors, two twin-size Murphy beds, plus a deck overlooking the creek—perfect for an office, art studio or guest area. Come see this special place for relaxing, enjoying the views, and exploring nature. There's also a great trout creek just outside your door!



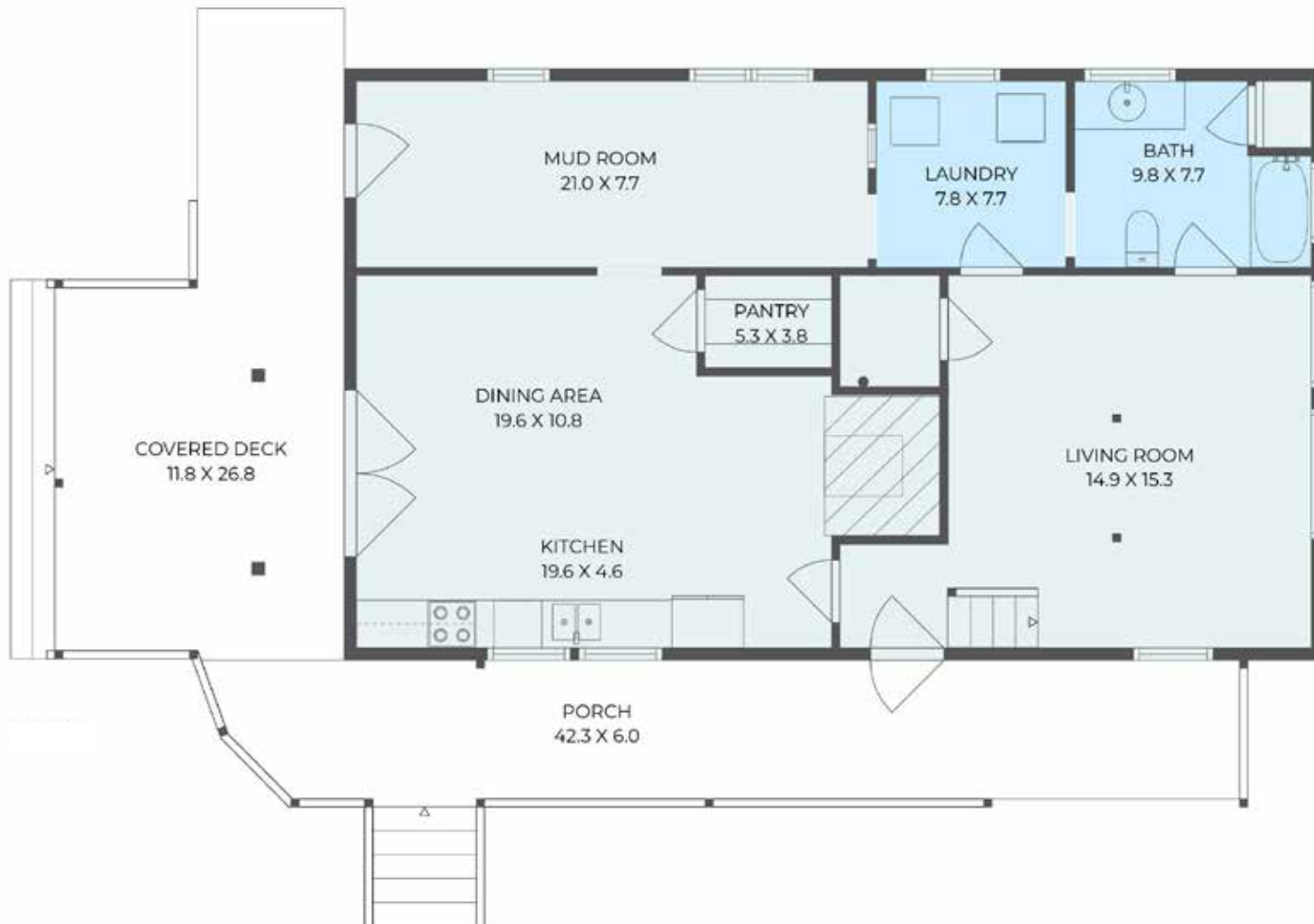
For more information, please contact:

VANESSA BYRD
828-275-8534

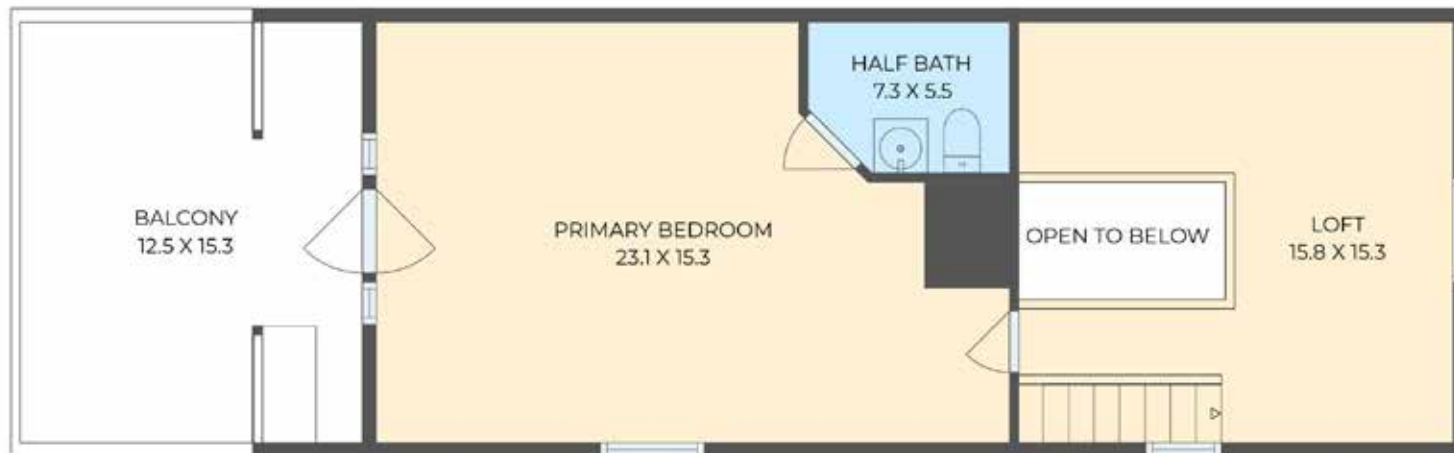
VANESSA@MYMOSAICREALTY.COM

DIRECTIONS

FROM DOWNTOWN ASHEVILLE: Take US-19/23 N to the Jupiter/Barnardsville exit. Turn right and continue for 6 miles to the right onto Dillingham Road. Destination is on the right. Directional sign on road; the house is over the bridge.



MAIN LEVEL



UPPER LEVEL