



8 DEANWOOD CIRCLE

1959 Cottage Rancher in South Asheville



MOSAIC
COMMUNITY LIFESTYLE REALTY

2 Bedrooms, 2 Bathrooms
1,358 SF + Basement + Garage • 0.32 Acre
MLS #4137754

INFO

8 Deanwood Circle
Asheville, NC 28803
2 Bedrooms, 2 Bathrooms
1,358 SF + Basement + Garage • 0.32 Acre
MLS #4137754

Logic and charm collide in this 1950s cottage rancher off Hendo Road, conveniently located 10 minutes to Mission, downtown or TC Roberson and 5 minutes to the Parkway! Large, level lot, plenty of off-street parking and a two-car garage provide space for your toys, while the fenced backyard has room for roaming. Step inside, where warm wood floors and lots of windows create character and a generously scaled open living area connects to a capacious kitchen with copious cabinets and countertops. Primary suite is enormous, complete with an updated bathroom and generous walk-in closet. Bedroom #2 is a wood-paneled cutie and the second full bath has retro vibes. Head to the full basement and get those creative juices flowing, with ample room to flex your literal or innovative muscles. And the pièce de résistance? A POOL! Yep, get ready for summer fun and becoming even more popular with friends and neighbors. You butterfly by soon to take a look at this swimming deal!



Ready for Hot Summer Days!



For more information, please contact:

CRAIG SEVERANCE

828.713.3757

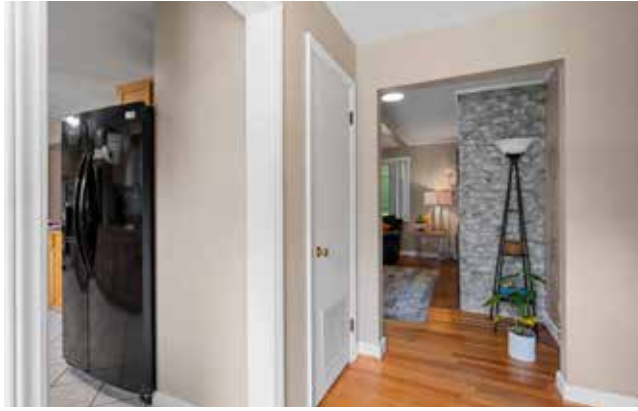
Craig@MyMosaicRealty.com

DIRECTIONS

FROM DOWNTOWN ASHEVILLE: So easy and convenient! Turn onto Deanwood Circle from Hendersonville Road/US-25, and it's the first house on the left. 10 minutes to Mission Hospital, downtown Asheville, or TC Roberson ... 5 minutes to the Blue Ridge Parkway!



Foyer • Bedrooms to Right of Entry



Foyer • Kitchen to Left of Entry



Fireplace Has Gas Logs (Though Owner Never Used Them)



Large Windows Highlight Living Room



Open Layout



Suntunnel Skylights and Lots of Windows



Kitchen Opens to Living and Dining Areas



Great Sense of Scale in the Kitchen and Living Areas



Great Kitchen Layout



Separate Wall Oven and Cooktop



Abundant Cabinets and Countertop Space



Large Primary Bedroom and Walk-in Closet



Double Doors Access Roomy Primary Suite



Plenty of Windows for Nice Light



Wood Floors and Ceiling Fans



Ensuite Bathroom Has a Soaking Tub ...



... and a Glass-Tiled Accent Wall

8 DEANWOOD CIRCLE

1959 Cottage Rancher in South Asheville

Asheville, NC 28803



Cute Second Bedroom



Cozy with Heart Pine-Paneled Walls



Retro Shared Bathroom



Spacious Basement Includes Laundry



Room for Creating, Parking, or Storing Outdoor Toys



Basement Flex Room



Basement Has Some Existing Plumbing



Clean, Expansive — and Ready for Your Vision!

8 DEANWOOD CIRCLE

1959 Cottage Rancher in South Asheville

Asheville, NC 28803



Create Your Oasis Just off Hendersonville Road



Your Own Fence-Enclosed Pool Is Ready for Summer!



Private Rear Patio and Fenced Yard



Two-Car Garage and Plenty of Off-Street Parking



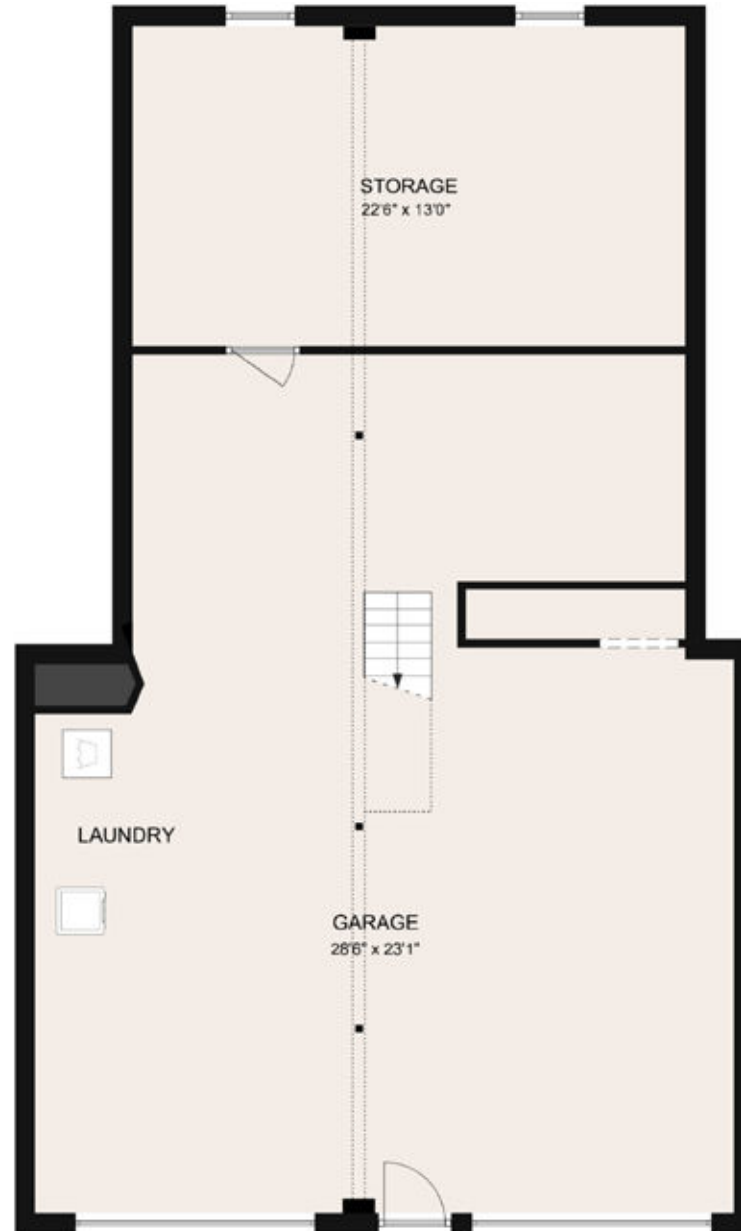
Rock Walls Accent Driveway and Pleasant, Level Lot



Surprisingly Quiet and Private-Feeling Location



MAIN LEVEL



BASEMENT LEVEL