



 VIRTUAL TOUR

73 CREEKS END CIRCLE

Spacious Home in the Popular Glens of Aberdeen



MOSAIC
COMMUNITY LIFESTYLE REALTY

4 Bedrooms, 3 Bathrooms
2,284 SF • 0.11 Acre
MLS #4365909



73 CREEKS END CIRCLE MILLS RIVER, NC 28759

4 Bedrooms, 3 Bathrooms
2,284 SF · 0.11 Acre
MLS #4365909

FEATURES

Spacious home in popular **Glens of Aberdeen** subdivision

Centrally located between Asheville and Hendersonville

Minutes from shopping, restaurants, and the proposed Mills River Publix

Covered entrance welcomes you

Flowing floor plan is drenched in natural light

Two sets of **sliding doors and vaulted ceilings** create an airy, open feeling in the main living/ dining area

Living room flows to kitchen

Kitchen offers **ample counter space, a large pantry, and a passthrough** to the living room

Convenient **primary suite on main** has vaulted ceiling, two closets, and an ensuite bathroom

Basement level features two bedrooms, a full bathroom, and a large family room



Sliding glass doors in family room open to backyard

New flooring throughout

Step out from the living room and enjoy relaxing evenings on the **elevated back deck**

Permanent canopy with a fan is perfect for sunny afternoons

Storage abounds in this home—basement level has large, dry storage with laundry and outside has a

storage **shed under the deck**

Raised garden beds await planting

Single-car garage with two-step entry

HOA includes: a **clubhouse, fitness center, outdoor pool, common areas, and a lovely pond**

Peace of mind: **Pardee Urgent Care is 2 miles away**

New **HVAC replaced** in 2024

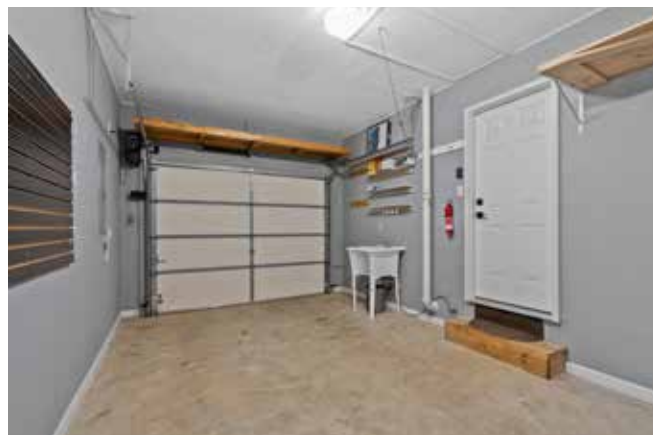


MOSAIC
COMMUNITY LIFESTYLE REALTY

46 Orchard Street, Suite 100, Asheville, NC 28801
WWW.MYMOSAICREALTY.COM







73 CREEKS END CIRCLE

Spacious Home in the Glens of Aberdeen

Mills River, NC 28759



73 CREEKS END CIRCLE

Spacious Home in the Glens of Aberdeen

Mills River, NC 28759



Welcome to the popular Glens of Aberdeen in Mills River—perfectly positioned between Asheville and Hendersonville. This light-drenched home features a flowing floor plan, updated flooring throughout, and vaulted ceilings that create an airy, open feel. The main floor is built for easy living with a kitchen that looks into the dining/living area and a large primary suite on the main level. Spend your afternoons on the elevated back deck, kept cool by a permanent canopy and fan. Downstairs, the finished basement features a huge family room that opens to the yard, plus two extra bedrooms for guests or an office. Storage is everywhere—from the large dry storage room to the shed under the deck. If you have a green thumb, the raised garden beds are ready for spring! Enjoy wonderful community perks like the outdoor pool, fitness center, and clubhouse, all just minutes from the proposed Mills River Publix, Sierra Nevada, shopping, and more. Just 20 minutes to both downtown Asheville and Hendersonville.

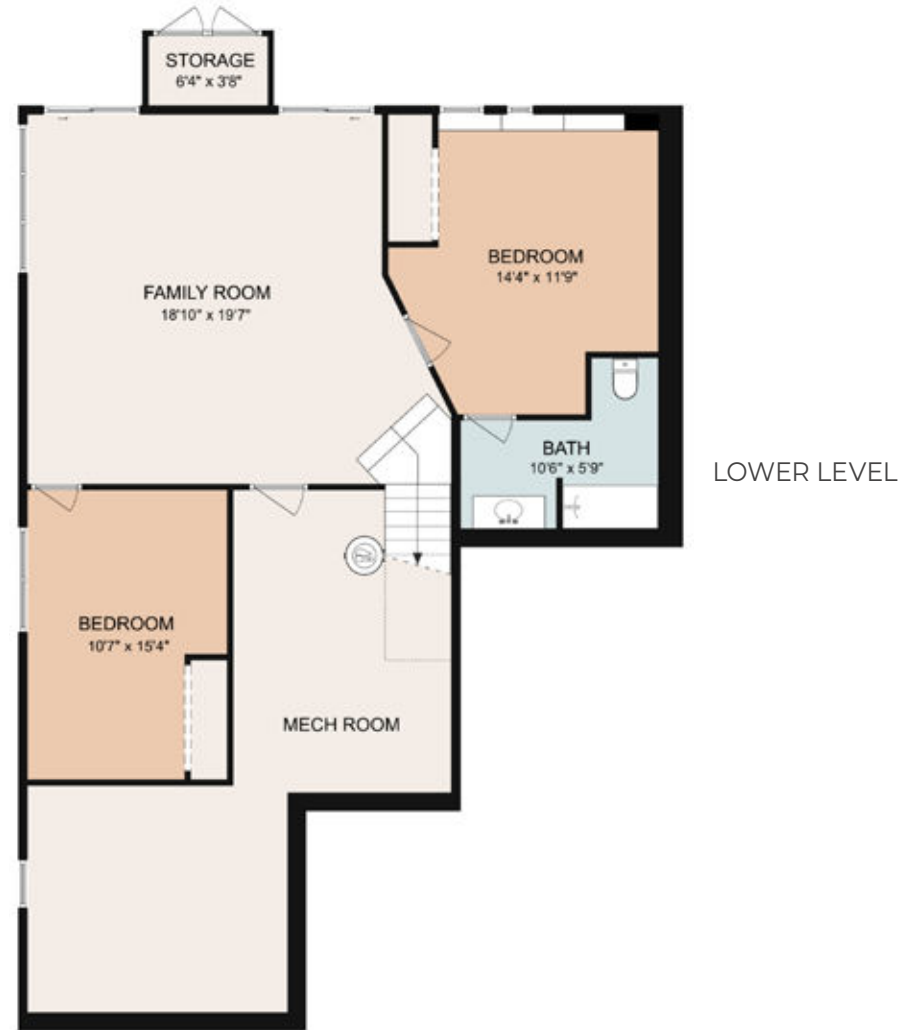


For more information, please contact:

TRIP HOWELL
828-450-4792
TRIP@MYMOSAICREALTY.COM

DRIVING DIRECTIONS

FROM ASHEVILLE: Head east on I-26 to the Airport Road/Exit 40/NC-280 W. Turn right at exit, then left onto Fanning Fields Road, then left again onto Butler Bridge Road. In 0.5 mile, turn left onto Aberdeen Circle. Bear right to stay on Aberdeen Circle, then right onto Creeks End Circle. Home is on your left.



FLOOR PLANS