



**MOSAIC**  
COMMUNITY LIFESTYLE  
**REALTY**

**FOX LAIR CROSSINGS**



**34 CARDEN DRIVE | WEAVERVILLE, NC 28787**

34 CARDEN DRIVE  
WEAVERVILLE, NC 28787



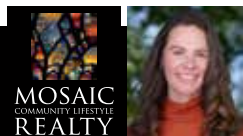
FOX LAIR CROSSINGS



## BEAUTIFULLY MAINTAINED TWO-STORY TRADITIONAL IN FOX LAIR CROSSING

... a gated community located minutes to downtown Weaverville. This beautifully maintained traditional two story home offers a peaceful setting with layered mountain greenery, mature landscaping, and inviting outdoor spaces. A covered front porch with stone accents and warm wood ceiling details sets the tone, while the main level features an open, light-filled layout with hardwood floors, a two-story great room, gas fireplace, formal dining room, and a well-appointed kitchen with center island, pantry, easy access to the rear deck. The main-level primary suite includes a spacious bath with dual vanity, walk-in shower, soaking tub, and walk-in closet, while the upper level offers two additional bedrooms, a full bath, and a versatile bonus room. The finished lower level expands the home's flexibility with a second living quarter featuring a private entrance, bedroom, full bath, separate kitchen, family room, and additional storage. Set on a private 0.50-acre lot with city water, city sewer, natural gas, fiber optics, an attached two-car garage, covered porch, rear deck, garden spaces, and a beautifully landscaped yard, this home offers comfort, privacy, and convenience just around the corner from Reems Creek Golf Club and minutes to downtown Weaverville.

4 BEDROOMS | 3.5 BATHROOMS | 3,697 SF | 0.5 ACRE



ELIZABETH PUTNAM  
828-301-6374  
ELIZABETH@MYMOSAICREALTY.COM

# 34 CARDEN DRIVE WEAVERVILLE, NC 28787



# 34 CARDEN DRIVE | WEAVERVILLE, NC 28787

4 BEDROOMS | 3.5 BATHROOMS | 3,697 SF | 0.5 ACRE

## FEATURES

- Located in the upscale, gated Fox Lair Crossings neighborhood
- No steep mountain roads on the approach; level driveway
- City water, sewer, natural gas, and fiber optic internet
- New roof 2025/2026
- Freshly painted exterior
- New color-bonded Hardi-Board installed in 2025
- Aprilaire whole-house air purification system added to the HVAC system
- One-level living with the primary bedroom, bath, laundry, and garage all on the main level
- Primary bedroom suite on the main level has vaulted ceilings, a bathroom with a walk-in shower, a jetted tub, and a walk-in closet
- Main-level two-car garage
- Open floor plan
- Large floor-to-ceiling windows throughout the home allow lots of natural light to enter the interior
- Gas fireplaces in the two-story great room and lower-level family room
- Oak floors on the main level
- Crown molding and chair rail molding in the dining room
- New ceiling fans in bedrooms
- Upper-level guest bedrooms and bonus room
- Lower-level guest quarters with a family room, kitchenette, and separate exterior entrance
- New encapsulated basement with sump pump and commercial-grade dehumidifier, completed in 2025
- Covered front porch
- New deck boards
- Retractable awning over back deck
- Beautifully landscaped half-acre lot
- Perennial garden featuring daffodils, tall bearded iris, peonies, roses, and daylilies
- Blooming shrubs, including rhododendrons, hydrangeas, azaleas, and spirea
- Variety of trees, including Japanese red maple, coral bark maple, arborvitae, dogwood, flowering cherry, and pear trees

## DRIVING DIRECTIONS

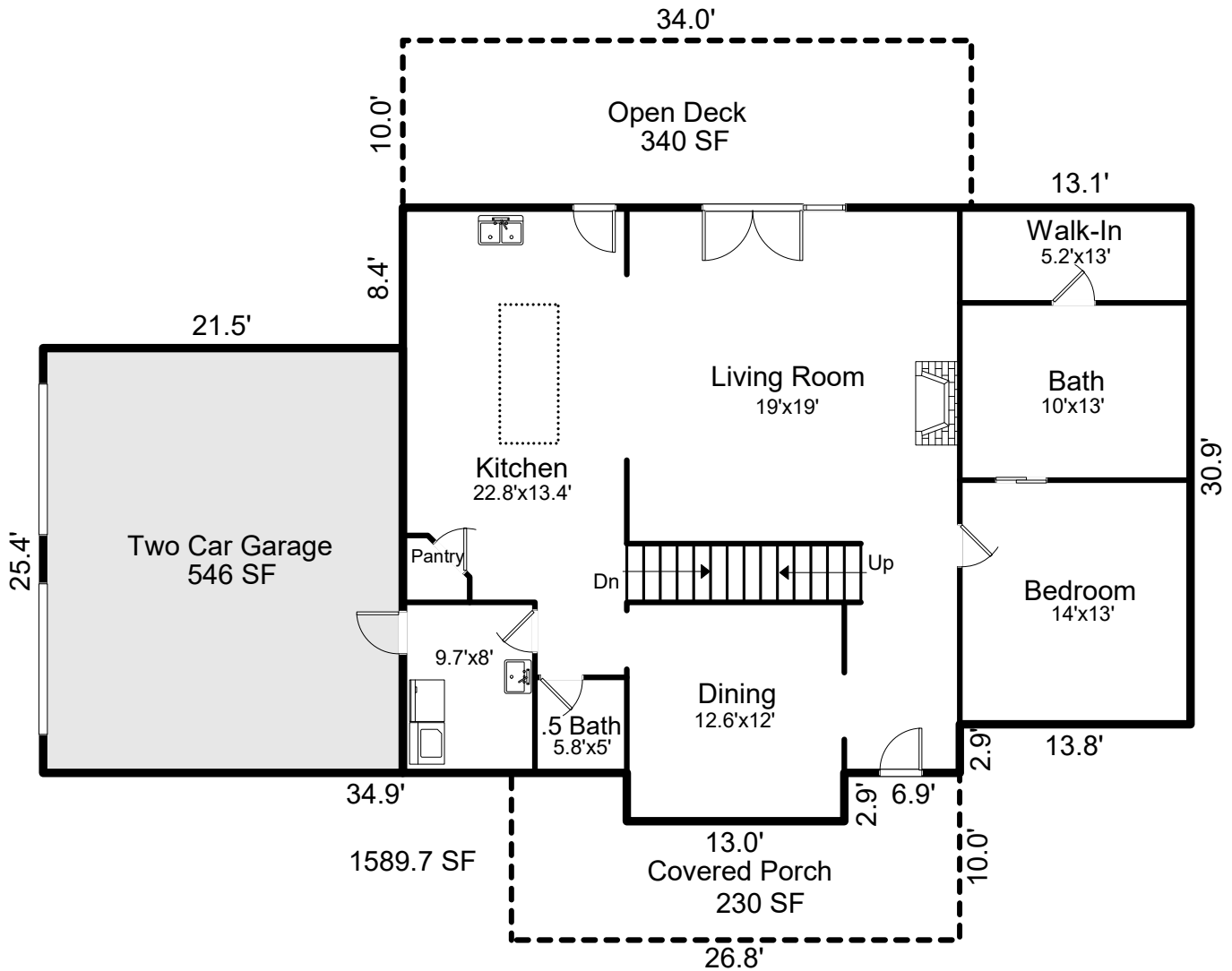
FROM DOWNTOWN ASHEVILLE: Take I-240 E to I 40 W. Take Exit 51 for Sweeten Creek Road. Turn left and continue for 3.2 miles. Turn left onto Fox Lair Crossings Drive (Fox Lair Crossings subdivision.) Follow Fox Lair Crossings Drive up the hill. 107 will be on your right.



# 34 CARDEN DRIVE | WEAVERVILLE, NC 28787

4 BEDROOMS | 3.5 BATHROOMS | 3,697 SF | 0.5 ACRE

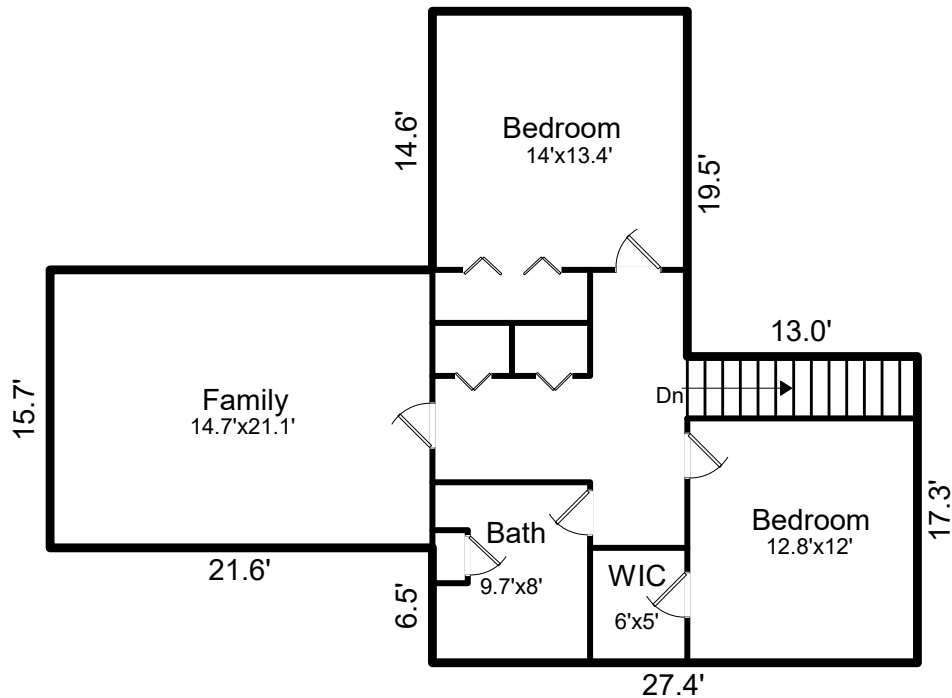
## MAIN LEVEL



# 34 CARDEN DRIVE | WEAVERVILLE, NC 28787

4 BEDROOMS | 3.5 BATHROOMS | 3,697 SF | 0.5 ACRE

## UPPER LEVEL



## LOWER LEVEL

