



## 8 BLUE SKY DRIVE

Adorable Log Cabin on 1.21 Acres



**MOSAIC**  
COMMUNITY LIFESTYLE REALTY

**2 Bedrooms, 2 Bathrooms**  
**1,658 SF • 1.21 Acres**  
**MLS #4359937**



## 8 BLUE SKY DRIVE LEICESTER, NC 28748

2 Bedrooms, 2 Bathrooms  
1,658 SF · 1.21 Acres  
MLS #4359937

### FEATURES

Adorable **log cabin** on 1.21 acres

**Super-quiet Airbnb**, consisting of two units

One single-bedroom/bath **unit per floor**

**Wraparound deck with views**

**Surrounded by mountains**, valleys and farms

Relax on **two private decks**

**Open floor plan**, vaulted ceilings, and a breakfast bar

**Matching shed** (located at corner of driveway)

**Private, fenced-in yard**

Low-maintenance **metal roof**

**Wood paneling on walls and ceiling** give a rustic feel in the main living areas

**Ceiling fans throughout** home



**Spacious bedrooms**

**Kitchen features:** Breakfast bar, oak cabinets with plenty of storage, refrigerator, dishwasher, microwave, **granite countertops**, and **pass-through to the dining and living room**

**Gravel driveway** with plenty of parking

French doors from living room and primary give **easy access to deck**

**Endless mountain views**

Upper unit has **prefinished oak hardwood floors**; lower level has **laminated plank flooring**

**Ceramic tile** in bathrooms

**Large backyard** and side yard, **fully fenced**

**Electric fireplace** in lower level

**Carport**

**Fire pit area**

**Vinyl windows**



**MOSAIC**  
COMMUNITY LIFESTYLE REALTY

46 Orchard Street, Suite 100, Asheville, NC 28801  
[WWW.MYMOSAICREALTY.COM](http://WWW.MYMOSAICREALTY.COM)



## 8 BLUE SKY DRIVE

Adorable Log Cabin on 1.21 Acres

Leicester, NC 28748



## 8 BLUE SKY DRIVE

Adorable Log Cabin on 1.21 Acres

Leicester, NC 28748



## 8 BLUE SKY DRIVE

Adorable Log Cabin on 1.21 Acres

Leicester, NC 28748



A lovely and rare find, this log cabin is an established short-term rental with two units (one bedroom, one bath each) and two kitchens. Enjoy the outdoors and peaceful country living, the stress floating away as you enjoy the beautiful view approach to this property. Low maintenance; has a newer metal roof. Great income producer—or simply enjoy it as your primary residence. The acre-plus corner lot has potential to subdivide (buyer to confirm). Two fenced yards are great for pets and play! Relax on the double wraparound decks and a fire pit area. Turnkey and move-in ready—or start booking Airbnb stays immediately. Located only 25 minutes to downtown Asheville and 15 minutes to West Asheville.



For more information, please contact:

**VANESSA BYRD**  
**828-275-8534**

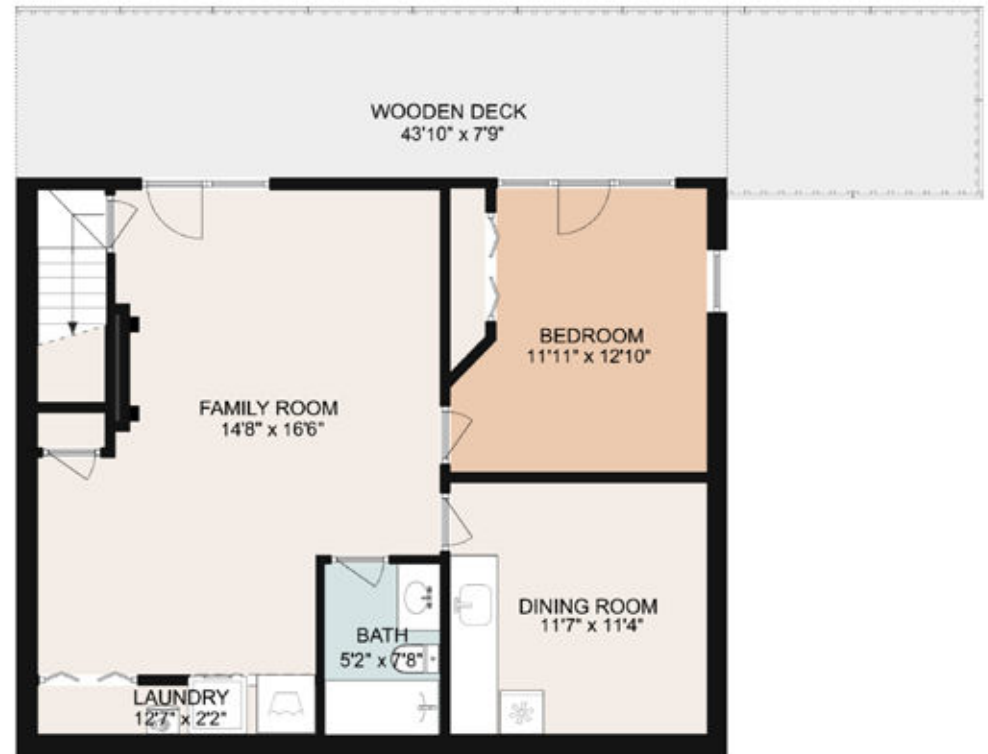
[VANESSA@MYMOSAICREALTY.COM](mailto:VANESSA@MYMOSAICREALTY.COM)

#### DIRECTIONS

FROM PATTON AVENUE: Get onto NC-63/New Leicester Highway, follow for about 11 miles, then turn right onto Alexander Road. In about 2 miles, take a right at Renaissance Place, then go down the hill—there is a sign for Blue Sky Drive. Go right and you'll see a shed on the left. 8 Blue Sky will be the first house on the left.



MAIN LEVEL



LOWER LEVEL