



MOSAIC  
COMMUNITY LIFESTYLE  
REALTY

BEAVERDAM



130 BLACK OAK DRIVE | ASHEVILLE, NC 28804



130 BLACK OAK DRIVE  
ASHEVILLE, NC 28804



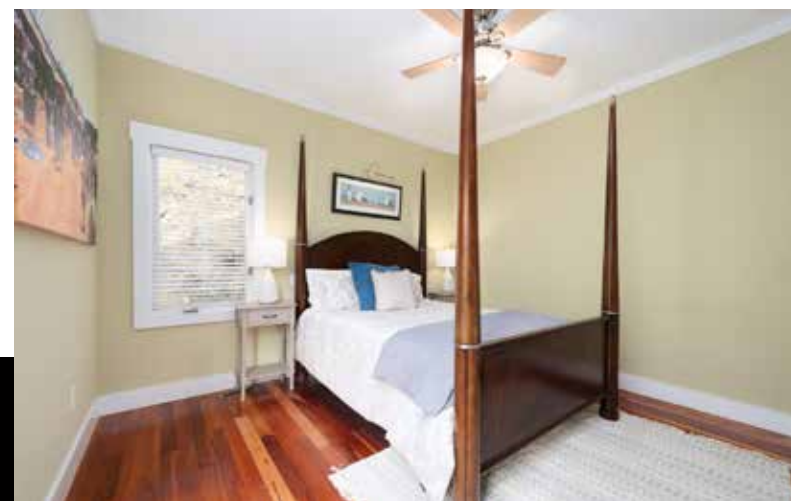
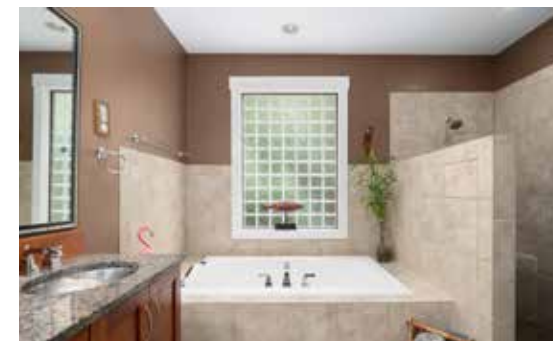
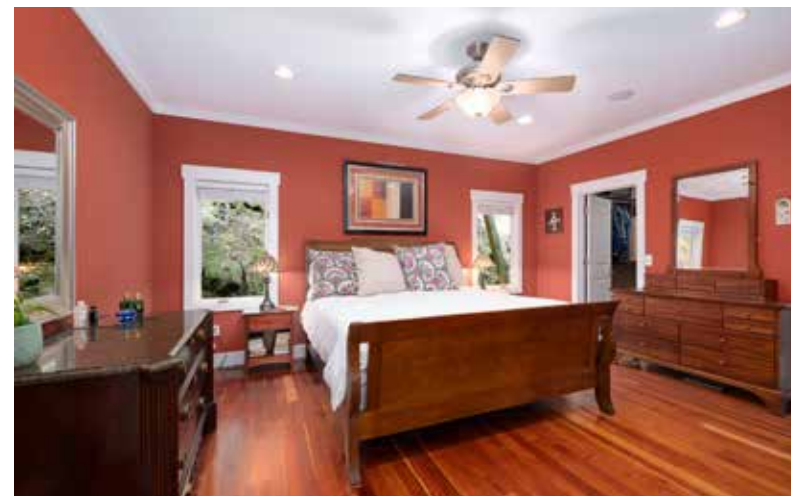
BEAVERDAM



## VIEWS! VIEWS! VIEWS!

This Beaverdam home is strategically sited and designed to take full advantage of the spectacular long-range mountain views. Enjoy sunrises and ever-changing mountain scenery from walls of windows inside or from two levels of decking outside. Step Inside to an impressive great room highlighted by floor-to-ceiling windows, vaulted ceilings and a soaring stone fireplace. Nicely equipped kitchen with granite counters and stainless appliances including a gas cooktop. Main-level primary suite has a walk-in closet and a spacious bathroom with a soaking tub and a tiled shower. Guest bedroom, hall bath and laundry room also on the main level. Upstairs, there's a loft for enjoying the views while relaxing or working from home, a convenient bathroom and another very spacious guest room. Nestled in The Forest of Beaverdam, this home feels like a private mountain oasis while being just minutes from the amenities of Asheville. The driveway is STEEP but these VIEWS are worth it!

3 BEDS | 3 BATHS | 2,439 SF | 0.73 ACRE | MLS #4186383



CAROL MARIN  
828-545-2712  
CAROL@MYMOSAICREALTY.COM



# 130 BLACK OAK DRIVE

## ASHEVILLE, NC 28804





# 130 BLACK OAK DRIVE | ASHEVILLE, NC 28804

3 BEDS | 3 BATHS | 2,439 SF | 0.73 ACRE | MLS #4186383

## FEATURES

- Private Beaverdam oasis with stunning long-range mountain views
- Strategically sited and designed to take full advantage of the spectacular views
- Extensive decking for taking in beautiful sunrises and the ever-changing mountain scenery
- Floor-to-ceiling windows, a vaulted ceiling, and an impressive stone fireplace highlight the great room
- Main-level living with open living/dining/kitchen
- Rich Brazilian cherry wood flooring throughout the main level
- Dining area features a breathtaking mountain view
- Well-equipped kitchen with granite countertops and stainless steel appliances, including a gas cooktop, plus a built-in oven and microwave
- Main-level primary bedroom with a cedar-lined walk-in closet and ensuite bath
- Spacious primary bathroom features a large soaking tub, a tiled shower and a double vanity
- The main level also includes a guest bedroom and a guest bathroom
- Relax or work from home while perched in the loft, enjoying the serene mountain scenery
- Extra-spacious upper-level bedroom has a large storage closet and access to a small private deck
- Full guest bathroom on the upper level
- Main-level laundry room with pantry storage
- Double-car garage
- Mountain-view retreat with privacy and convenience
- Minutes to a multitude of conveniences, the Blue Ridge Parkway, and the world-class dining and cultural activities of downtown Asheville

## DIRECTIONS

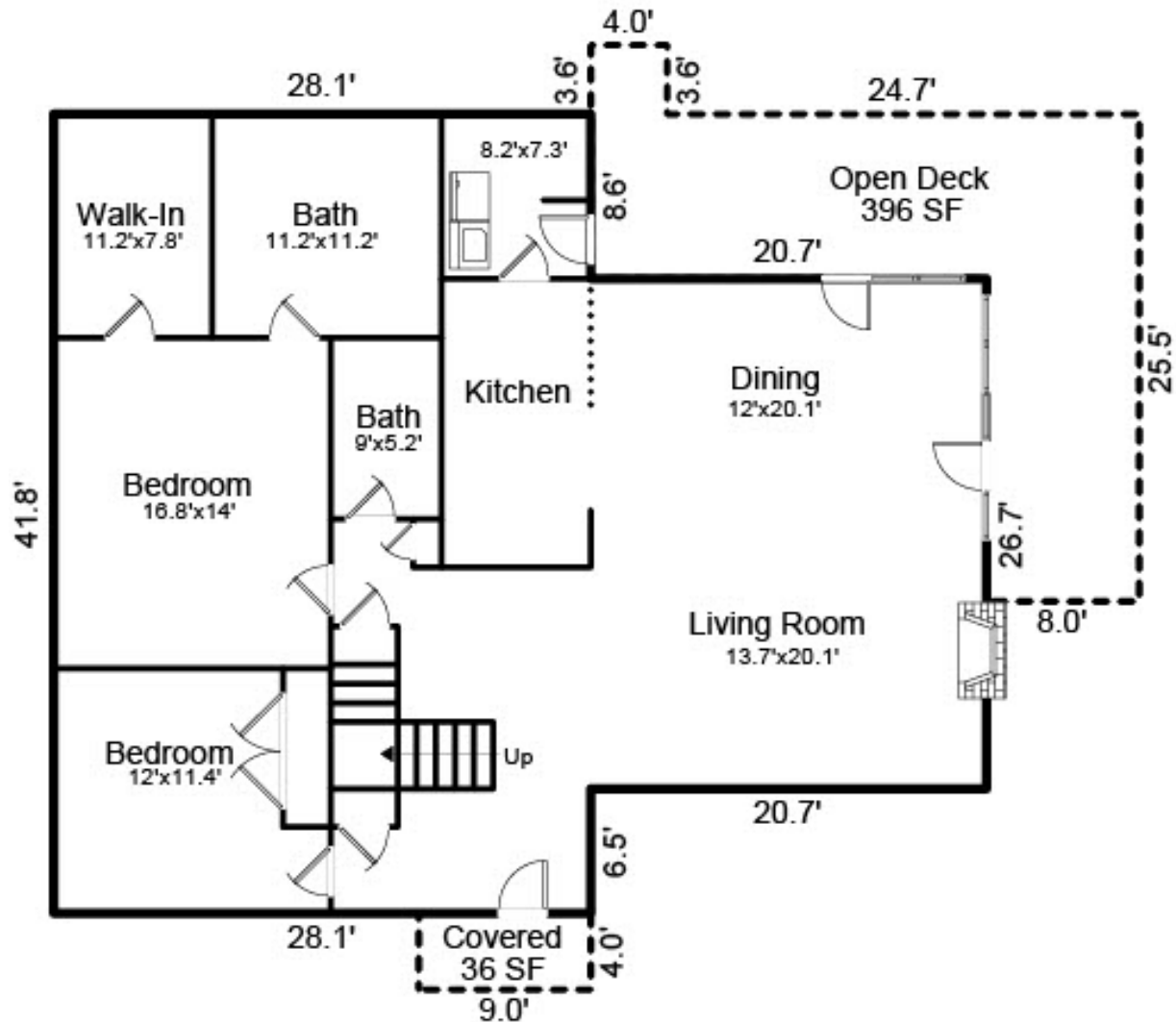
FROM DOWNTOWN ASHEVILLE: Head north on Merrimon Avenue. Turn right onto Beaverdam Road; left onto Pinecroft Road; and left again onto Black Oak Road at The Forest subdivision entrance. Keep right on Black Oak and follow to 130 (on the curve on the left). Note the driveway is short, but VERY steep, there is only room for one car to park and turn around at the top. There is a two-car garage.



# 130 BLACK OAK DRIVE | ASHEVILLE, NC 28804

3 BEDS | 3 BATHS | 2,439 SF | 0.73 ACRE | MLS #4186383

## MAIN LEVEL



# 130 BLACK OAK DRIVE | ASHEVILLE, NC 28804

3 BEDS | 3 BATHS | 2,439 SF | 0.73 ACRE | MLS #4186383

