



MOSAIC
COMMUNITY LIFESTYLE
REALTY

MARSHALL



280 BEAR RIVER LODGE TRAIL | MARSHALL, NC 28753

280 BEAR RIVER LODGE TRAIL MARSHALL, NC 28753



MOSAIC
COMMUNITY LIFESTYLE
REALTY

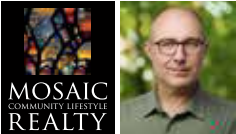
MARSHALL



TUCKED INTO SERENE BEAR RIVER LODGE ALONG THE SCENIC BIG LAUREL RIVER

... this like-new custom home is a true mountain retreat surrounded by some of Western North Carolina's most sought-after natural amenities. Enjoy world-class trout fishing just moments away, plus easy access to kayaking and hiking along the Appalachian Trail—all while being only 10 minutes to Hot Springs, 15 minutes to downtown Marshall and 40 minutes to Asheville. The setting is exceptional, with lush landscaping, mature trees, and native plants creating a private, peaceful backdrop. Outdoor living shines with a wrap-around deck and a vaulted screened porch—complete with electricity and hot tub hookup—perfect for soaking in the sights and sounds of nature year-round. Inside, the home blends comfort and luxury with vaulted ceilings, a stunning stone-surround gas fireplace, and an open, airy layout. The kitchen features Fantasy Brown granite countertops, stainless steel appliances, custom cabinetry with crown molding, tile backsplash, and a walk-in pantry with wine storage. The main-level primary suite offers a relaxing retreat with vaulted ceilings, dual closets, and a spa-inspired bath with soaking tub, walk-in shower, and double vanity. Additional flexible living spaces, a spacious bonus room, and an oversized two-car garage with workshop space complete this thoughtfully designed mountain home.

3 BEDROOMS | 2.5 BATHROOMS | 2,549 SF | 0.81 ACRE



SHANE PETERS
828-691-9267
SHANE@MYMOSAICREALTY.COM



280 BEAR RIVER LODGE TRAIL

MARSHALL, NC 28753



280 BEAR RIVER LODGE TRAIL | MARSHALL, NC 28753

3 BEDROOMS | 2.5 BATHROOMS | 2,549 SF | 0.81 ACRE

FEATURES

- Like-new, custom-built home in the peaceful neighborhood of Bear River Lodge—a private community nestled along the Big Laurel River in Marshall
- This truly special setting boasts an escape from the hustle and bustle of everyday life—10 minutes to Hot Springs, 15 minutes to downtown Marshall and 40 minutes to downtown Asheville
- Perfect as a primary residence, part-time home, or vacation rental
- Enjoy world-class trout fishing, nearby kayaking, and hiking the Appalachian Trail
- Recent updates include fresh interior and exterior paint, a new roof and 6" gutters, new kitchen appliances and granite countertops, new hot water heater + crawl space encapsulation and water management system installation (full list attached to MLS)
- Amazing yard features lush landscaping with mature trees and native plants—lots of healthy outdoor living
- Inviting entry/foyer with coat closet
- Spacious living room with vaulted/cathedral ceiling and stone-surround gas fireplace + deck access; wraparound deck and bridge connect to the versatile screened porch that features a vaulted ceiling, electricity and hot tub connection
- Well-appointed kitchen features Fantasy Brown granite countertops, stainless steel appliances, gorgeous cabinets with crown molding, tile backsplash, a double-basin sink, and a walk-in pantry with built-in shelves and wine bottle storage
- Wraparound counter with breakfast bar
- Dining area off the kitchen with space for a large table + deck access
- Main-level primary suite features a vaulted ceiling, stunning sliding barn door, walk-in closet + second closet, and ensuite full bathroom that includes a double vanity, soaking tub, walk-in shower, and private water closet
- Flex space/room with built-in storage bench and shelves has many possibilities
- Powder room and laundry room on the main level
- Upstairs hallway connects two bedrooms, a bonus room, a full bath, and a spacious linen closet
- Large bonus room perfect for relaxing and entertaining friends and family
- Full bath with double vanity, and private shower/water closet
- Oversized two-car garage with extra storage and built-in workshop space

DIRECTIONS

FROM MARSHALL HIGHWAY: Take US-25/US-70 north towards Hot Springs. At the Laurel River Store, bear right onto Hwy 208 to Bear River Lodge on the right. Go through the gated entrance and bear right at Club House to 280 Bear River Lodge Trail on the right. Sign in the yard.



280 BEAR RIVER LODGE TRAIL | MARSHALL, NC 28753

3 BEDROOMS | 2.5 BATHROOMS | 2,549 SF | 0.81 ACRE

FLOOR PLANS

MAIN LEVEL



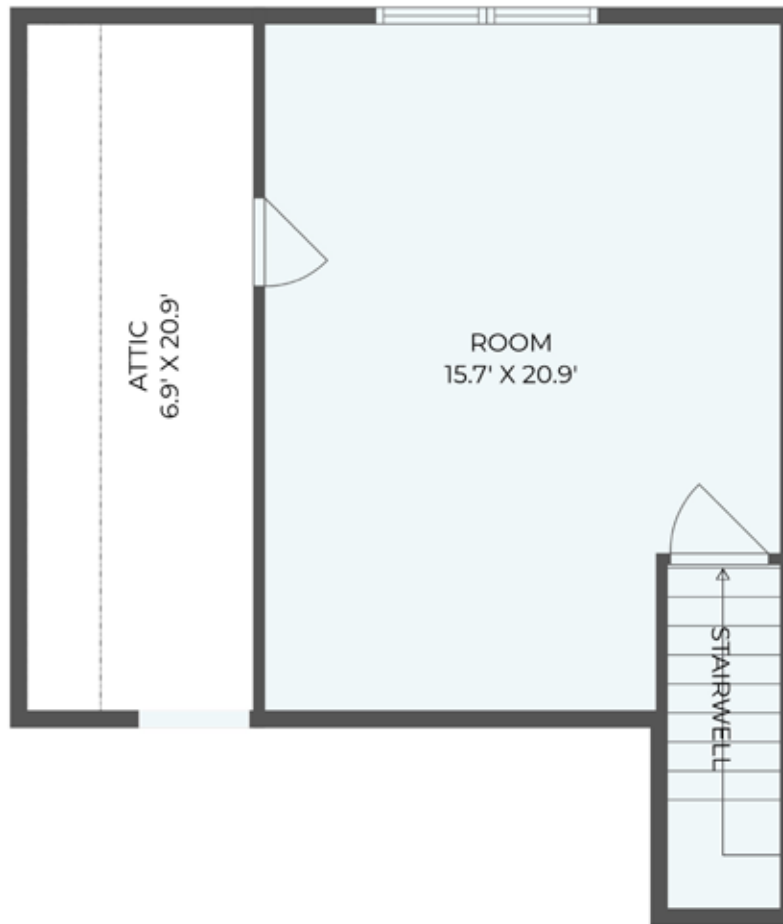
UPPER LEVEL



280 BEAR RIVER LODGE TRAIL | MARSHALL, NC 28753

3 BEDROOMS | 2.5 BATHROOMS | 2,549 SF | 0.81 ACRE

UPPER LEVEL/LOFT



280 BEAR RIVER LODGE TRAIL | MARSHALL, NC 28753

3 BEDROOMS | 2.5 BATHROOMS | 2,549 SF | 0.81 ACRE

LOWER LEVEL

