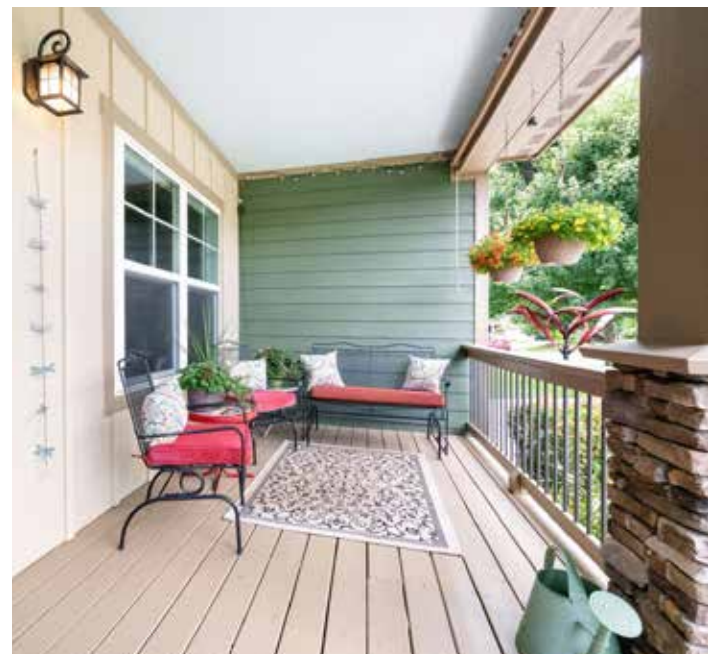




MOSAIC
COMMUNITY LIFESTYLE
REALTY

ARDEN



12 ASHER LANE | ARDEN, NC 28704

12 ASHER LANE
ARDEN, NC 28704



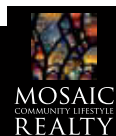
ARDEN



WELL-MAINTAINED, CRAFTSMAN-STYLE HOME IN THE COTTAGES AT GLENN OAKS

... features convenient, one-level living with a finished basement. The open floor plan includes a spacious living room with stone-surround gas fireplace, a well-appointed kitchen, and a dining area with access to the sunny deck ready for al fresco dining. The primary bedroom offers an abundance of natural light, a walk-in closet with custom built-in storage, and an ensuite full bathroom. Two additional bedrooms, a second full bathroom, and laundry/mudroom complete the main level. Thoughtfully designed basement includes a large, open family room, fourth bedroom/flex space, full bathroom with walk-in shower, and convenient utility room with exterior access. The covered lower-level patio, mature landscaping, and a two-car garage round out a multitude of delightful amenities. Located minutes from highly desirable Biltmore Park, South Asheville shopping, dining, and area amenities.

4 BEDS | 3 BATHS | 2,972 SF | 0.19 ACRE | MLS #4272445



WILSON HOOD
828-545-0551
WILSON@MYMOSAICREALTY.COM

12 ASHER LANE

ARDEN, NC 28704



12 ASHER LANE | ARDEN, NC 28704

4 BEDS | 3 BATHS | 2,972 SF | 0.19 ACRE | MLS #4272445

FEATURES

Exterior + Curb Appeal

- » Well-maintained Craftsman-style home in The Cottages at Glenn Oaks
- » Lush, mature landscaping frames the home
- » Covered front porch with ample room for gathering and relaxing
- » Sunny rear deck perfect for al fresco dining
- » Covered lower-level patio for firepit, hot tub, or outdoor gatherings
- » Mature trees provide natural privacy
- » Oversized two-car garage with extra storage space
- » Plenty of off-street parking

Main Living Areas

- » Convenient one-level living with open and airy floor plan
- » Spacious living room with cut stone-surround gas fireplace
- » Elegant design with stylish fixtures throughout
- » Dining area located off the kitchen with access to deck
- » Laundry conveniently located on the main level

Kitchen

- » Well-appointed chef's kitchen featuring granite countertops and stainless steel appliances
- » Abundant cabinet and counter space for functionality
- » Large island with double sinks and breakfast bar

Main Level Bedrooms + Bathrooms

- » Primary suite receives excellent natural light
- » Ensuite full bath with double vanity and tiled walk-in shower with glass sliding doors
- » Walk-in closet with built-in closet organization system
- » Second bedroom with cozy carpet and ceiling fan
- » Third bedroom located on main level
- » Second full bath located on the main level

Finished Basement

- » Large finished basement offering many possibilities
- » Flexible space with sliding barn doors – great for home office, gym, fourth bedroom or media room
- » Bespoke details and custom touches throughout
- » Full bathroom with multi-functional sink and tile walk-in shower with glass block accent
- » Workshop space ideal for hobbyists or craftspeople



12 ASHER LANE | ARDEN, NC 28704

4 BEDS | 3 BATHS | 2,972 SF | 0.19 ACRE | MLS #4272445

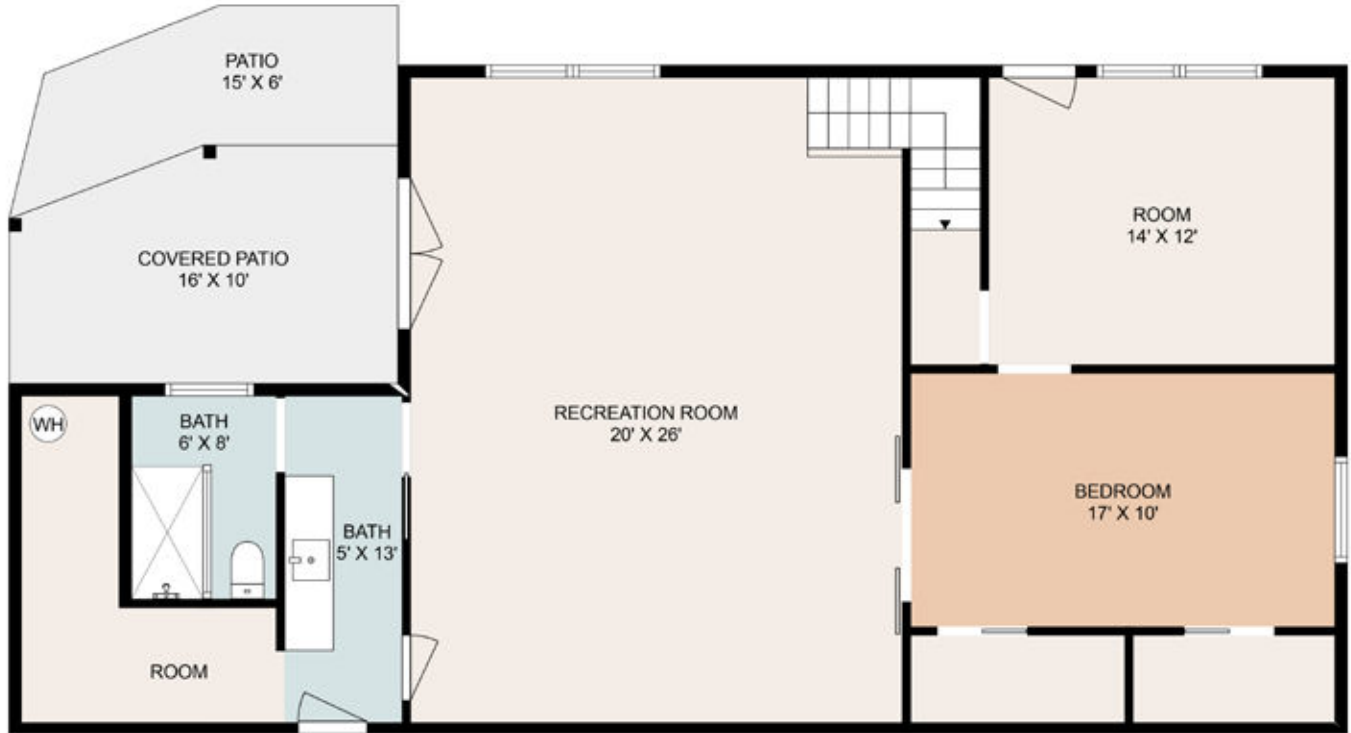
MAIN LEVEL



12 ASHER LANE | ARDEN, NC 28704

4 BEDS | 3 BATHS | 2,972 SF | 0.19 ACRE | MLS #4272445

LOWER LEVEL



DRIVING DIRECTIONS

From downtown Asheville: Take I-26 to exit 37. Turn right onto Long Shoals Road. Turn left onto Ledbetter Road. Turn left onto Asher Lane. 12 Asher Lane is on the left. Sign in the yard.