

22 BROAD STREET
ASHEVILLE, NC 28801



CENTRAL ASHEVILLE



MYMOSAICREALTY.COM • 828-707-9556

22 BROAD STREET | ASHEVILLE, NC 28801

22 BROAD STREET
ASHEVILLE, NC 28801



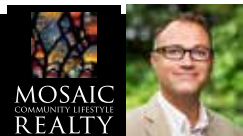
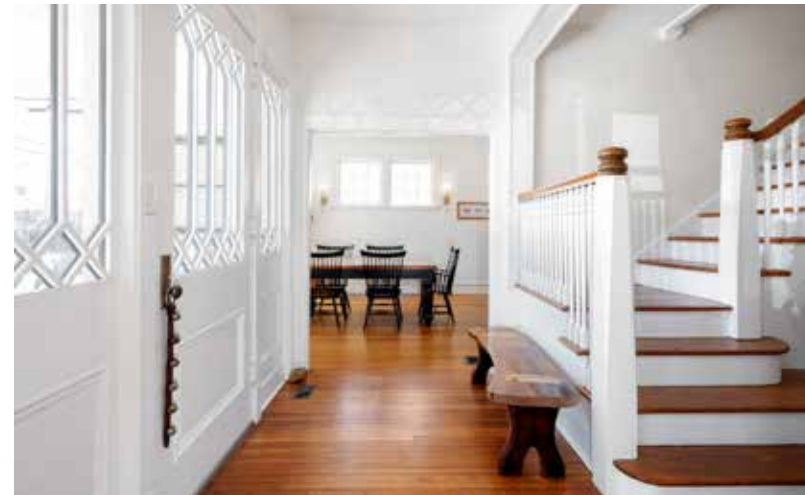
CENTRAL ASHEVILLE



HISTORIC HOME IN THE DESIRABLE CHESTNUT NEIGHBORHOOD

... a walkable community close to Merrimon Avenue and only blocks to downtown. Boasting old-fashioned charm, like the stunning original heart pine floors, this home also offers modern amenities for the best of both worlds. Enjoy unparalleled urban living + easy access to all that WNC has to offer. The foyer with grand staircase welcomes you home, where you can elegantly entertain from the spacious living room, chef's kitchen, and formal dining area. Luxurious primary suite features a walk-in closet and a spa-like bath. Large bedrooms upstairs get great natural light; main-level bedroom makes a great office. Big basement offers a laundry area, plenty of storage area, and a two-car garage used as a workshop. Great outdoor living, too, with a rocking-chair front porch, sunny back deck, and fully fenced areas. Covered RV storage. Shared driveway with plenty of parking behind the home + convenient on-street parking.

4 BD | 2.5 BA | 2,647 + 1,518 SF BASEMENT | 0.19 AC | MLS #4232987



ERIC ALBEE
828-712-9395
ERIC@MYMOSAICREALTY.COM

22 BROAD STREET | ASHEVILLE, NC 28801

4 BEDS | 2.5 BATHS | 2,647 SF + 1,518 SF BASEMENT | 0.19 ACRE | MLS #4232987

FEATURES

- Lovingly cared-for historic home in desirable Chestnut neighborhood; close to Merrimon Avenue amenities and only three blocks to downtown Asheville
- Located in a lovely, walkable neighborhood boasting mature trees and an eclectic mix of architectural styles, this home retains old-world elemental charm while offering modern amenities; period details include original heart pine flooring throughout, wide interior doorways, and crown molding
- Enjoy urban living + easy access to all that Western North Carolina has to offer
- Healthy outdoor living with the Southern-style, rocking-chair front porch; a sunny back deck; and fully fenced play area for kids of all ages
- Covered RV storage with electric hook-up
- Southern-style, covered front porch for relaxing; space for swinging bench
- Inviting foyer with grand staircase
- Spacious living room with 10-foot ceiling, lots of windows provide ample natural light, brick-surround fireplace, exposed coffered ceiling, built-in window bench with extra storage
- Chef's kitchen features marble counters, stainless steel appliances that include a six-burner Imperial range/stove, restaurant-grade industrial exhaust hood system, tile backsplash, soft-close cabinets and drawers, and access to the sunny back deck
- Extended L-shaped counter with breakfast bar
- Formal dining room with great natural light and space for a large table
- Bedroom on main level makes a great home office
- Upstairs landing connects three bedrooms
- Fairy-tale primary suite features an almost 10-foot ceiling, a walk-in closet with built-in drawers for organization, and a bathroom that includes a granite-topped vanity, beautiful tile floors, a soaking tub, and a tiled, walk-in shower with bench
- Large second-level bedrooms get a multitude of natural light; one bedroom has a built-in sitting bench with extra storage
- Second full bathroom upstairs with tiled shower + tub and adjacent sitting/reading nook
- Multi-functional basement with exterior entrance, laundry area, and lots of storage space
- Workshop/hobby room connects with the two-car, tandem garage
- Shared driveway with plenty of off-street parking behind the home + convenient on-street parking

DIRECTIONS

FROM DOWNTOWN ASHEVILLE: Take Merrimon Avenue north to Broad Street. Turn right onto Broad Street. 22 Broad Street is on the right. Sign in the yard.



22 BROAD STREET | ASHEVILLE, NC 28801

4 BEDS | 2.5 BATHS | 2,647 SF + 1,518 SF BASEMENT | 0.19 ACRE | MLS #4232987

MAIN LEVEL



22 BROAD STREET | ASHEVILLE, NC 28801

4 BEDS | 2.5 BATHS | 2,647 SF + 1,518 SF BASEMENT | 0.19 ACRE | MLS #4232987

UPPER LEVEL



22 BROAD STREET | ASHEVILLE, NC 28801

4 BEDS | 2.5 BATHS | 2,647 SF + 1,518 SF BASEMENT | 0.19 ACRE | MLS #4232987

BASEMENT LEVEL

