

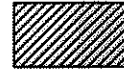
"466-468 MEDFORD STREET CONDOMINIUM"
466-468 Medford Street, Somerville, MA

Unit #4 - 3rd Level Floor Plan

UNIT #4 - TOTAL SQUARE FOOTAGES PER LEVEL
"466-468 MEDFORD STREET CONDOMINIUM"
466-468 Medford Street, Somerville, MA

3rd LEVEL	1,282 sq.ft.
TOTAL SQUARE FOOTAGE	1,282 sq.ft.

NOTE: SQUARE FOOTAGES DO NOT INCLUDE ANY EXTERIOR SPACES

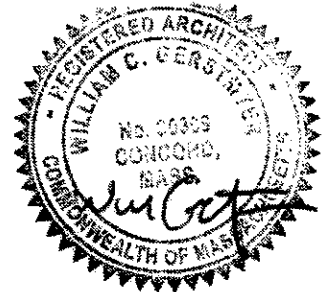


Common Areas shown with
Hatch Pattern on Plans

I HEREBY CERTIFY THAT THIS PLAN FULLY AND
ACCURATELY DEPICTS THE LAYOUT, LOCATION,
MAIN ENTRANCE, UNIT NUMBER, DIMENSIONS,
AND APPROXIMATE AREA OF THE UNIT AND THE
IMMEDIATE COMMON AREA TO WHICH
IS HAS ACCESS, AS BUILT.

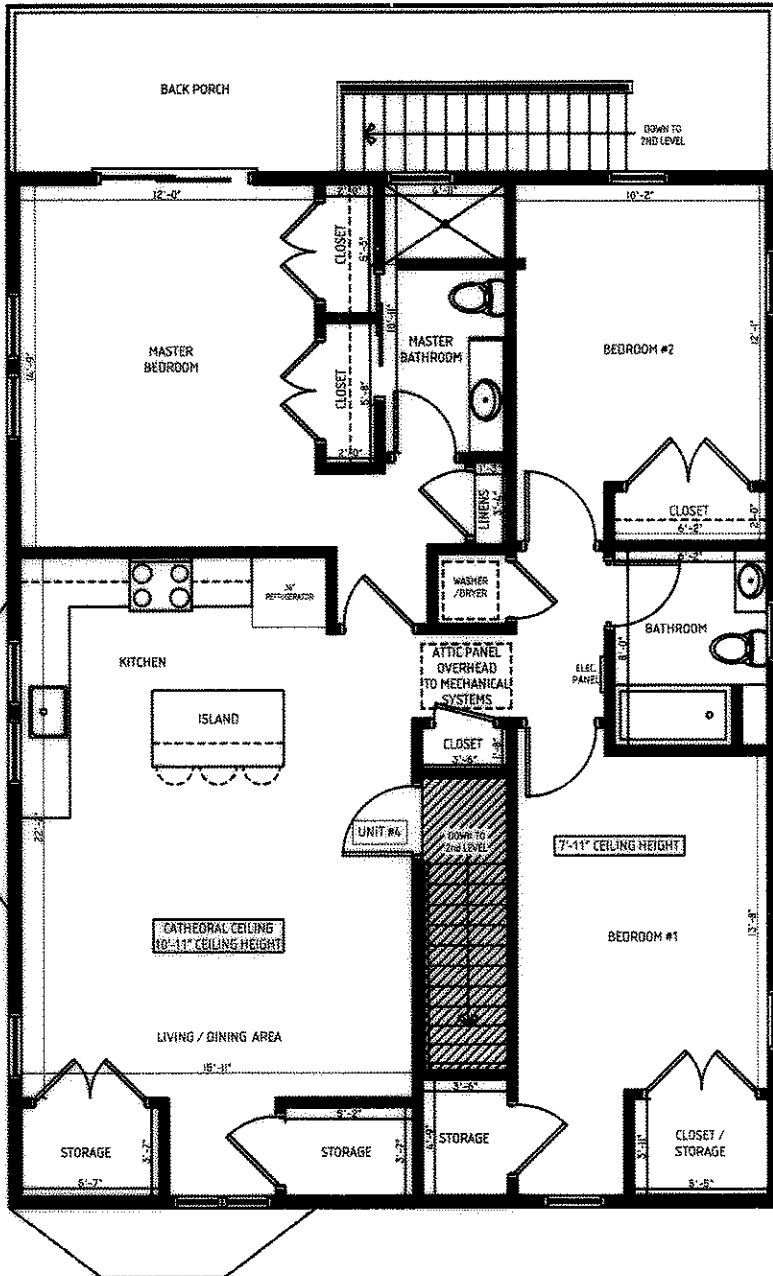
I HEREBY CERTIFY THAT THIS PLAN HAS BEEN
PREPARED IN ACCORDANCE WITH THE RULES AND
REGULATIONS OF THE REGISTRY OF DEEDS OF THE
COMMONWEALTH OF MASSACHUSETTS.

JULY 22, 2018



ARCHITECTS:
WILL GERSTMYER
978.609.1331 / WGERSTMYER@GMAIL.COM
CARLOS B. SALIB
617-678-1133 / CARLOS@SALIBDESIGN.COM

RESERVED FOR REGISTRY USE



1 UNIT #4 - 3rd LEVEL FLOOR PLAN
466 - 468 MEDFORD STREET CONDOMINIUM, SOMERVILLE, MA 1/8" = 1'-0"

PLAN NO. 670 OF 2018
SHEET 5 OF 5

670 of 2018 5/5