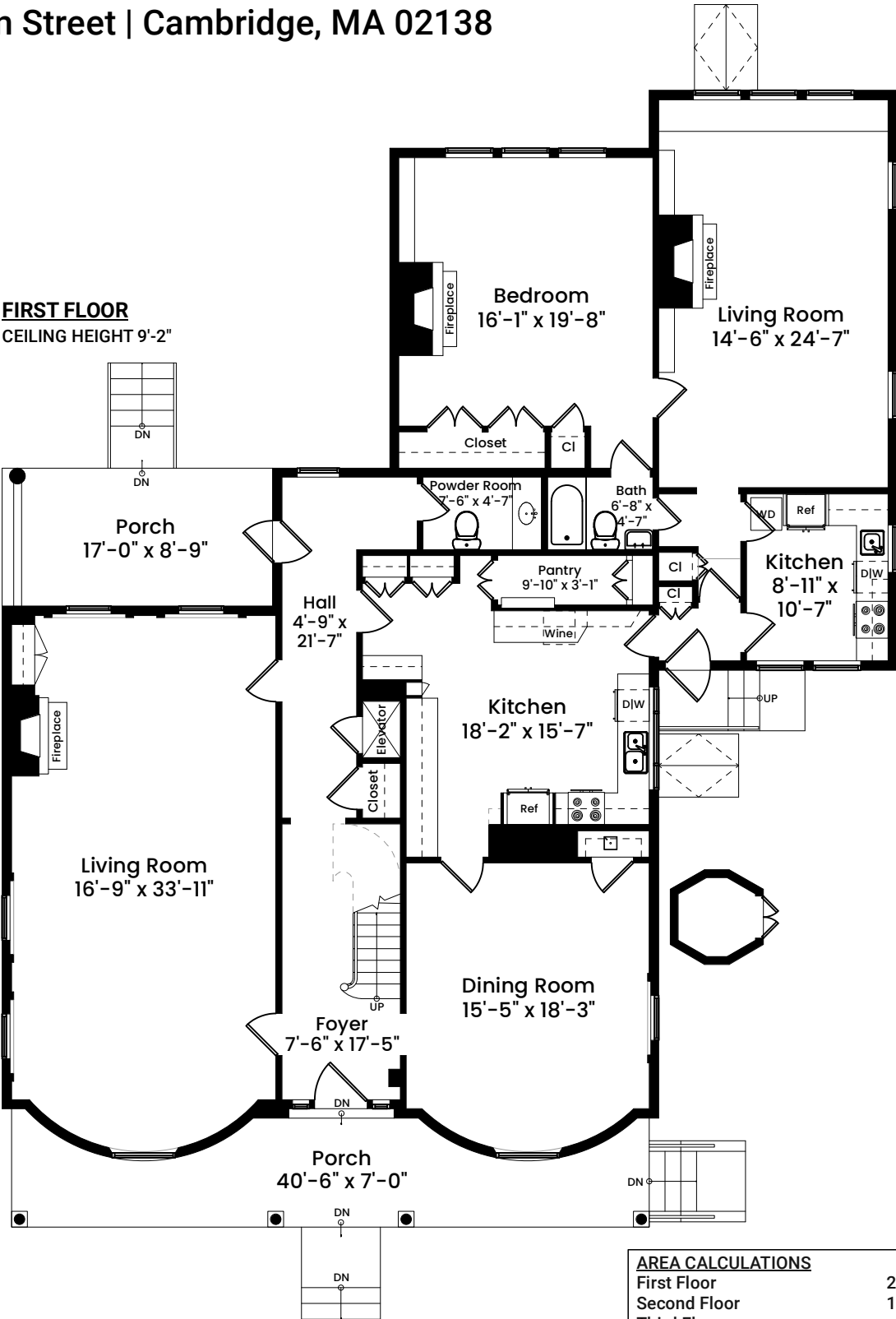


29 Follen Street | Cambridge, MA 02138

FIRST FLOOR

CEILING HEIGHT 9'-2"



AREA CALCULATIONS

First Floor	2,513 SF
Second Floor	1,635 SF
Third Floor	790 SF
Total Gross Living Area	4,938 SF
Basement	2,412 SF
Third Floor Area Below 5'	155 SF
Total Area	7,505 SF

1 1 2 4 8  
Scale 1 inch = 10 feet



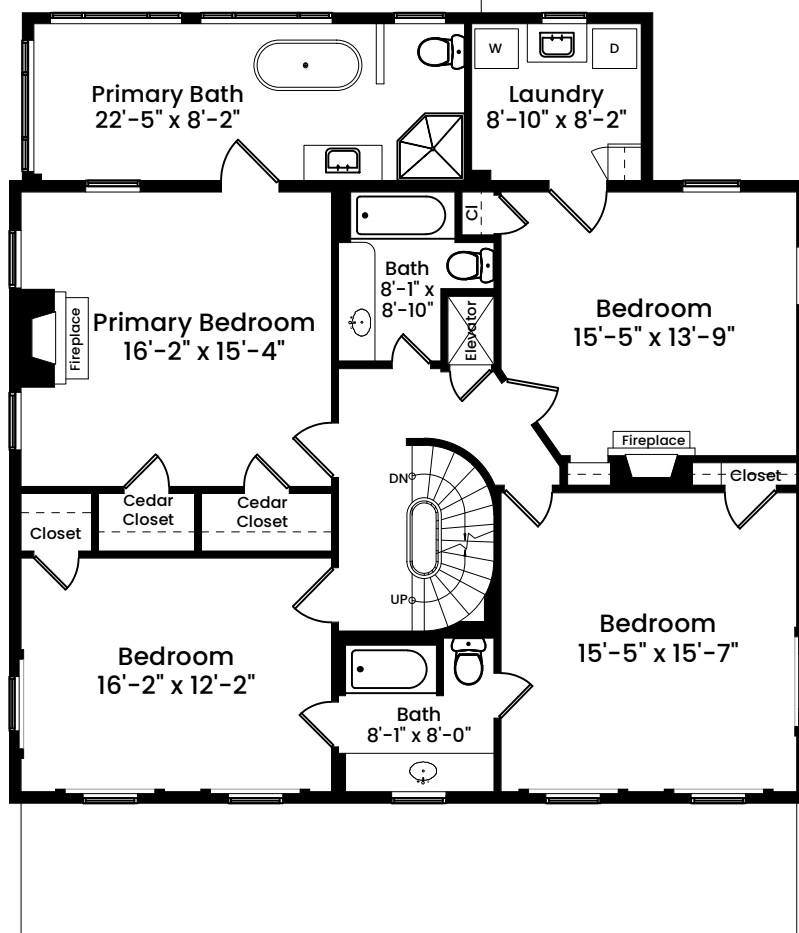
Architecturally drafted in June 2025 by:  
National Floor Plans (800) 328-0217  
Associate Member | American Institute of Architects  
Contact [www.nationalfloorplans.com](http://www.nationalfloorplans.com) for .dwg AutoCAD files  
or square footage questions about this property.

Dimensions are not guaranteed and are provided for informational purposes only.  
Individual room dimensions are not used to calculate overall square footage.  
National Floor Plans follows ANSI guidelines for calculating square footage.

# 29 Follen Street | Cambridge, MA 02138

## SECOND FLOOR

CEILING HEIGHT 8'-4"



1 1 2 4 8  
Scale 1 inch = 10 feet



Architecturally drafted in June 2025 by:  
National Floor Plans (800) 328-0217  
Associate Member | American Institute of Architects  
Contact [www.nationalfloorplans.com](http://www.nationalfloorplans.com) for .dwg AutoCAD files  
or square footage questions about this property.

### AREA CALCULATIONS

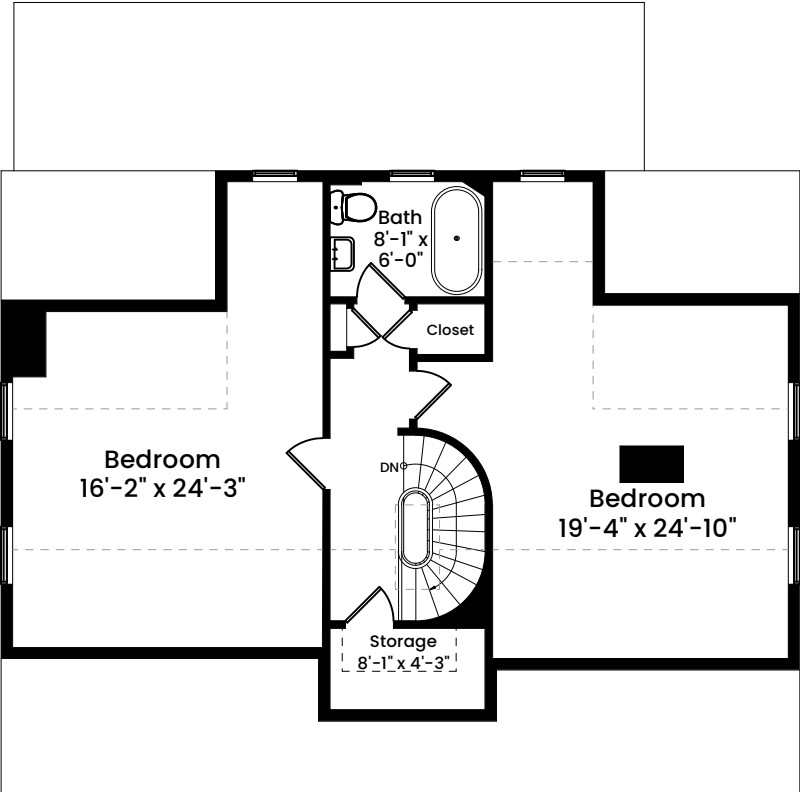
First Floor	2,513 SF
Second Floor	1,635 SF
Third Floor	790 SF
Total Gross Living Area	4,938 SF

Basement	2,412 SF
Third Floor Area Below 5'	155 SF
Total Area	7,505 SF

Dimensions are not guaranteed and are provided for informational purposes only.  
Individual room dimensions are not used to calculate overall square footage.  
National Floor Plans follows ANSI guidelines for calculating square footage.

# 29 Follen Street | Cambridge, MA 02138

## THIRD FLOOR CEILING HEIGHT 7'-3"



1 1 2 4 8  
Scale 1 inch = 10 feet



Architecturally drafted in June 2025 by:  
National Floor Plans (800) 328-0217  
Associate Member | American Institute of Architects  
Contact [www.nationalfloorplans.com](http://www.nationalfloorplans.com) for .dwg AutoCAD files  
or square footage questions about this property.

AREA CALCULATIONS	
First Floor	2,513 SF
Second Floor	1,635 SF
Third Floor	790 SF
Total Gross Living Area	4,938 SF
Basement	2,412 SF
Third Floor Area Below 5'	155 SF
Total Area	7,505 SF

Dimensions are not guaranteed and are provided for informational purposes only.  
Individual room dimensions are not used to calculate overall square footage.  
National Floor Plans follows ANSI guidelines for calculating square footage.

[illegible]

CEILING HEIGHT 7'-0"

1 1 2 4 8

Scale 1 inch = 10 feet



Dimensions are not guaranteed and are provided for informational purposes only.  
Individual room dimensions are not used to calculate overall square footage.  
National Floor Plans follows ANSI guidelines for calculating square footage.