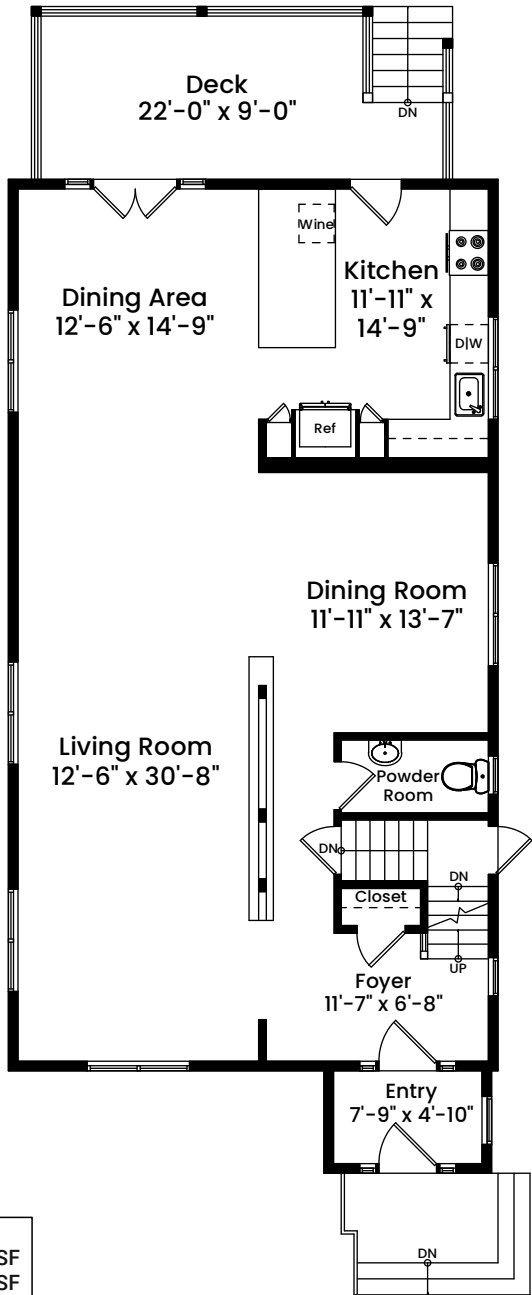


# 229 Lakeview Avenue | Cambridge, MA 02138

## FIRST FLOOR

CEILING HEIGHT 8'-8"



### AREA CALCULATIONS

First Floor	1,183 SF
Second Floor	1,183 SF
Third Floor	555 SF
Total Gross Living Area	2,921 SF
Basement	1,183 SF
Entry	46 SF
Third Floor Area Below 5'	99 SF
Total Area	4,249 SF

Architecturally drafted in August 2025 by:  
National Floor Plans (800) 328-0217  
Associate Member | American Institute of Architects  
Contact [www.nationalfloorplans.com](http://www.nationalfloorplans.com) for .dwg AutoCAD files  
or square footage questions about this property.



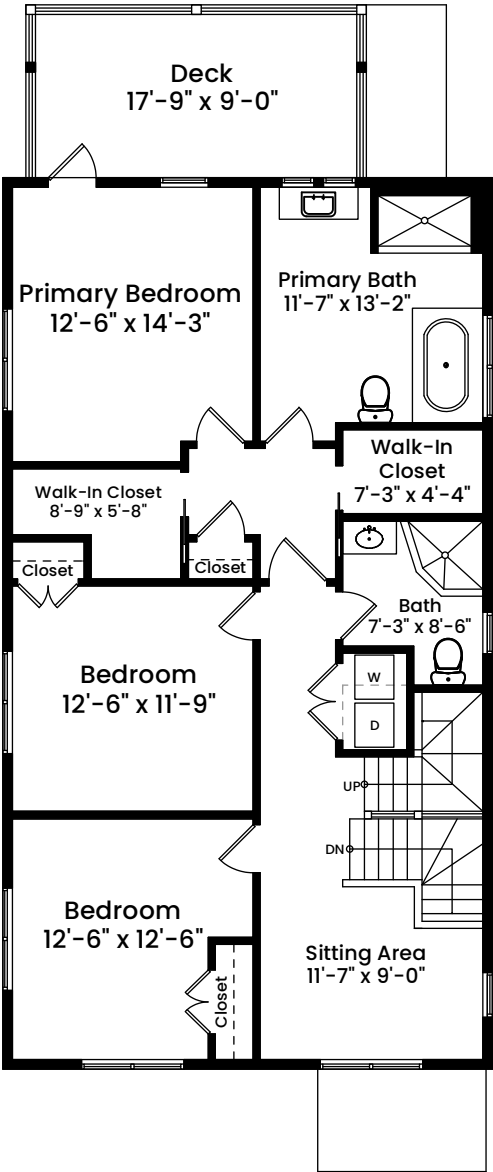
1 1 2 4 8  
Scale 1 inch = 10 feet

Dimensions are not guaranteed and are provided for informational purposes only.  
Individual room dimensions are not used to calculate overall square footage.  
National Floor Plans follows ANSI guidelines for calculating square footage.

229 Lakeview Avenue | Cambridge, MA 02138

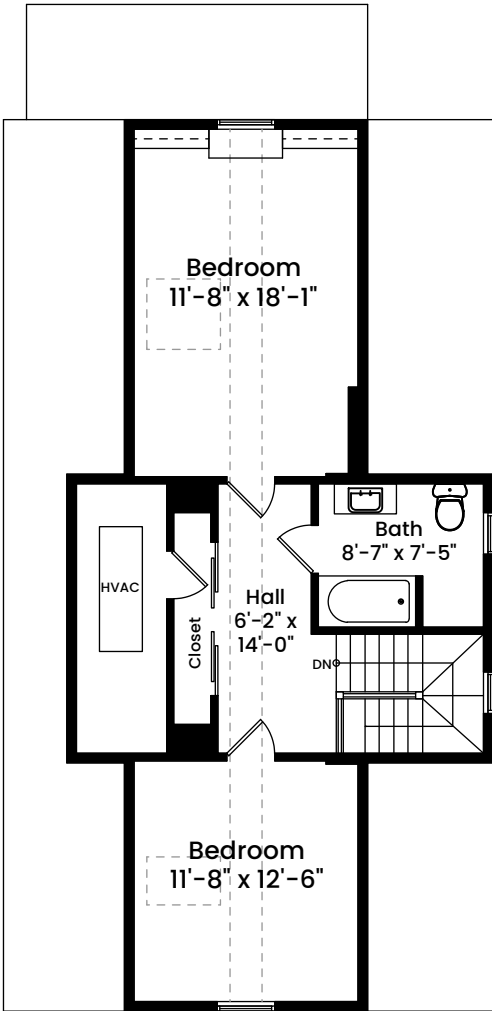
**SECOND FLOOR**

CEILING HEIGHT 8'-7"



**THIRD FLOOR**

CEILING HEIGHT 7'-6"



**AREA CALCULATIONS**

First Floor	1,183 SF
Second Floor	1,183 SF
Third Floor	555 SF
Total Gross Living Area	2,921 SF
Basement	1,183 SF
Entry	46 SF
Third Floor Area Below 5'	99 SF
Total Area	4,249 SF

Architecturally drafted in August 2025 by:  
National Floor Plans (800) 328-0217  
Associate Member | American Institute of Architects  
Contact [www.nationalfloorplans.com](http://www.nationalfloorplans.com) for .dwg AutoCAD files  
or square footage questions about this property.

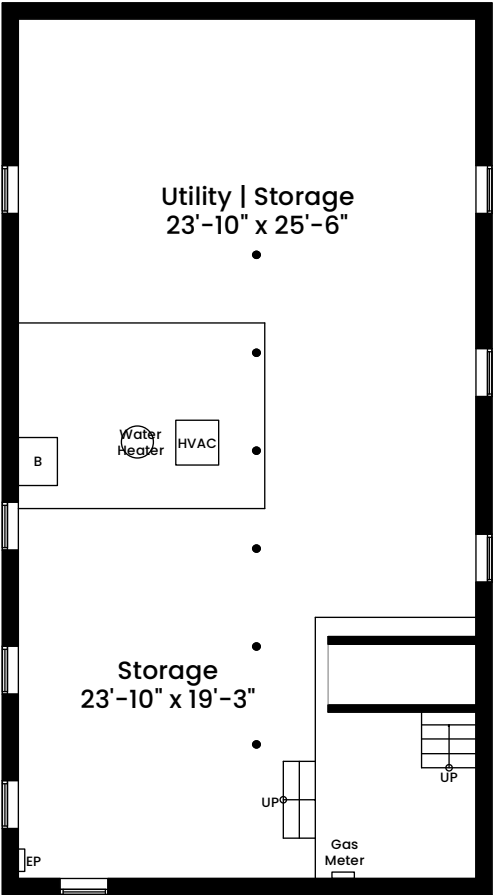


1 1 2 4 8  
Scale 1 inch = 10 feet

Dimensions are not guaranteed and are provided for informational purposes only.  
Individual room dimensions are not used to calculate overall square footage.  
National Floor Plans follows ANSI guidelines for calculating square footage.

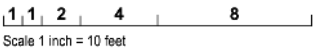
# 229 Lakeview Avenue | Cambridge, MA 02138

**BASEMENT**  
CEILING HEIGHT 8'-3"



AREA CALCULATIONS	
First Floor	1,183 SF
Second Floor	1,183 SF
Third Floor	555 SF
Total Gross Living Area	2,921 SF
Basement	1,183 SF
Entry	46 SF
Third Floor Area Below 5'	99 SF
Total Area	4,249 SF

Architecturally drafted in August 2025 by:  
National Floor Plans (800) 328-0217  
Associate Member | American Institute of Architects  
Contact [www.nationalfloorplans.com](http://www.nationalfloorplans.com) for .dwg AutoCAD files  
or square footage questions about this property.



Dimensions are not guaranteed and are provided for informational purposes only.  
Individual room dimensions are not used to calculate overall square footage.  
National Floor Plans follows ANSI guidelines for calculating square footage.