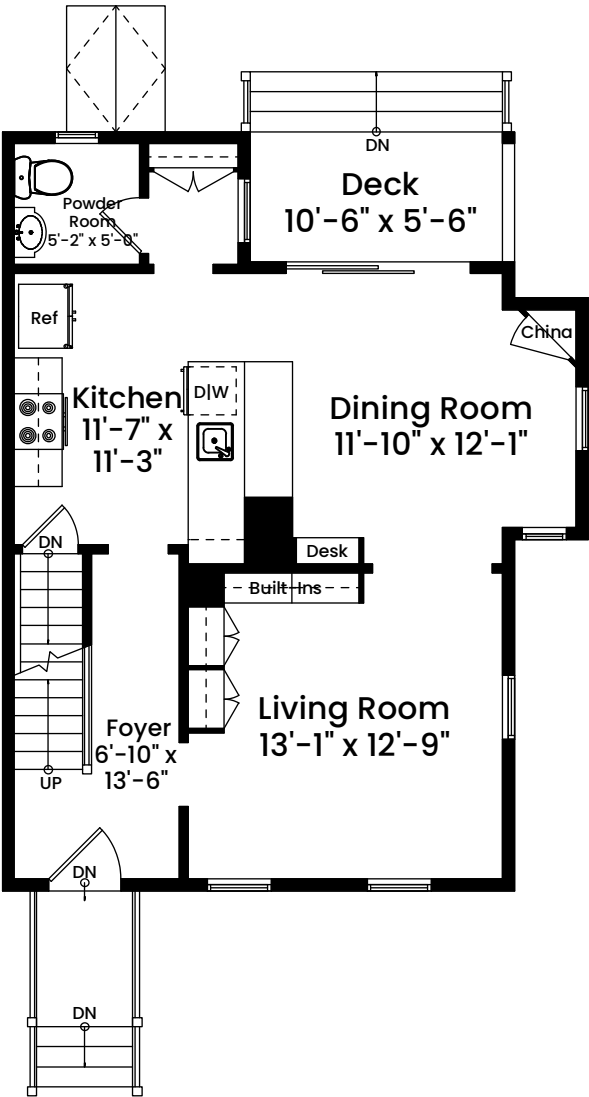
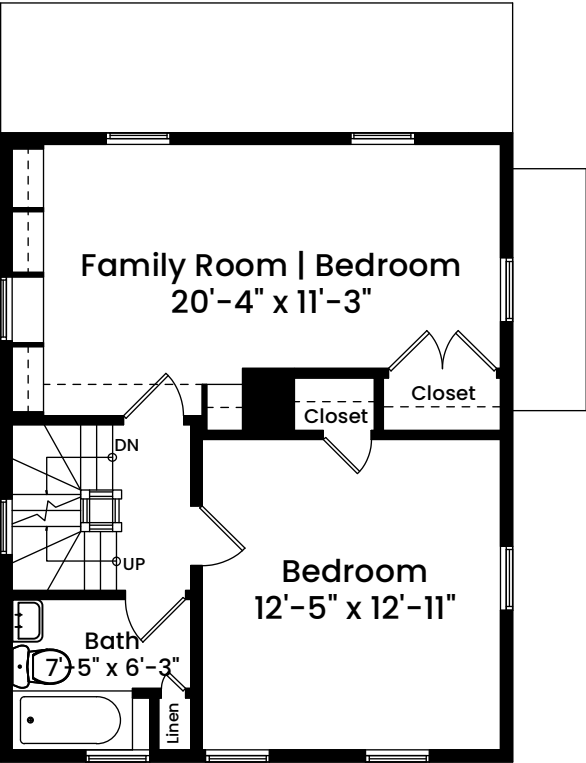


# 21 Bowdoin Street | Somerville, MA 02143

## FIRST FLOOR CEILING HEIGHT 9'-0"



## SECOND FLOOR CEILING HEIGHT 8'-6"



Architecturally drafted in April 2023 by:  
National Floor Plans (800) 328-0217  
Associate Member | American Institute of Architects  
Contact [www.nationalfloorplans.com](http://www.nationalfloorplans.com) for .dwg AutoCAD files  
or square footage questions about this property.

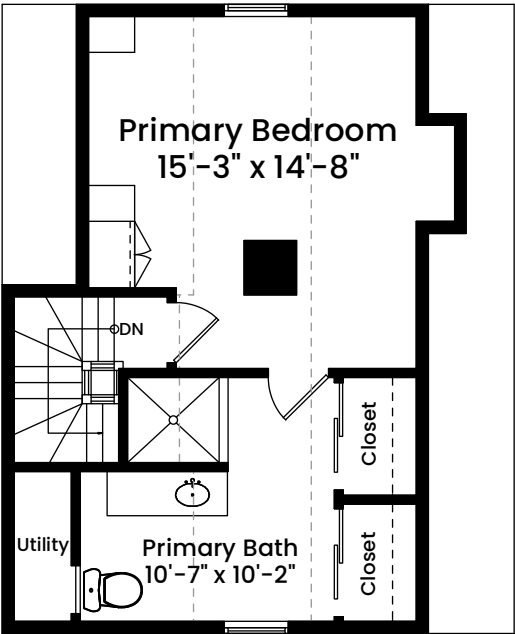


1 1 2 4 8  
Scale 1/8" = 1 foot

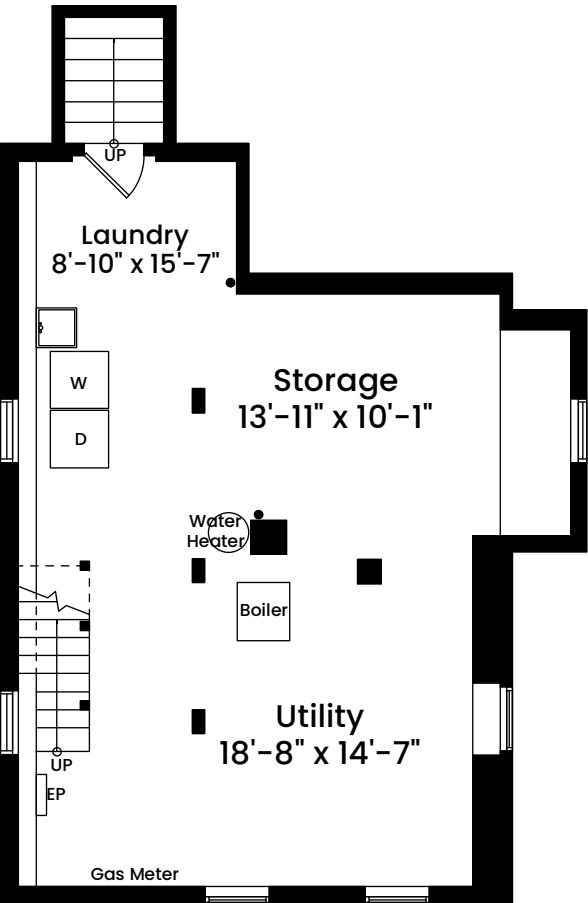
Dimensions are not guaranteed and are provided for informational purposes only.  
Individual room dimensions are not used to calculate overall square footage.  
National Floor Plans follows ANSI guidelines for calculating square footage.

21 Bowdoin Street | Somerville, MA 02143

THIRD FLOOR  
CEILING HEIGHT 7'-10"



BASEMENT  
CEILING HEIGHT 6'-8"



Architecturally drafted in April 2023 by:  
National Floor Plans (800) 328-0217  
Associate Member | American Institute of Architects  
Contact [www.nationalfloorplans.com](http://www.nationalfloorplans.com) for .dwg AutoCAD files  
or square footage questions about this property.



1 1 2 4 8  
Scale 1/8" = 1 foot

Dimensions are not guaranteed and are provided for informational purposes only.  
Individual room dimensions are not used to calculate overall square footage.  
National Floor Plans follows ANSI guidelines for calculating square footage.