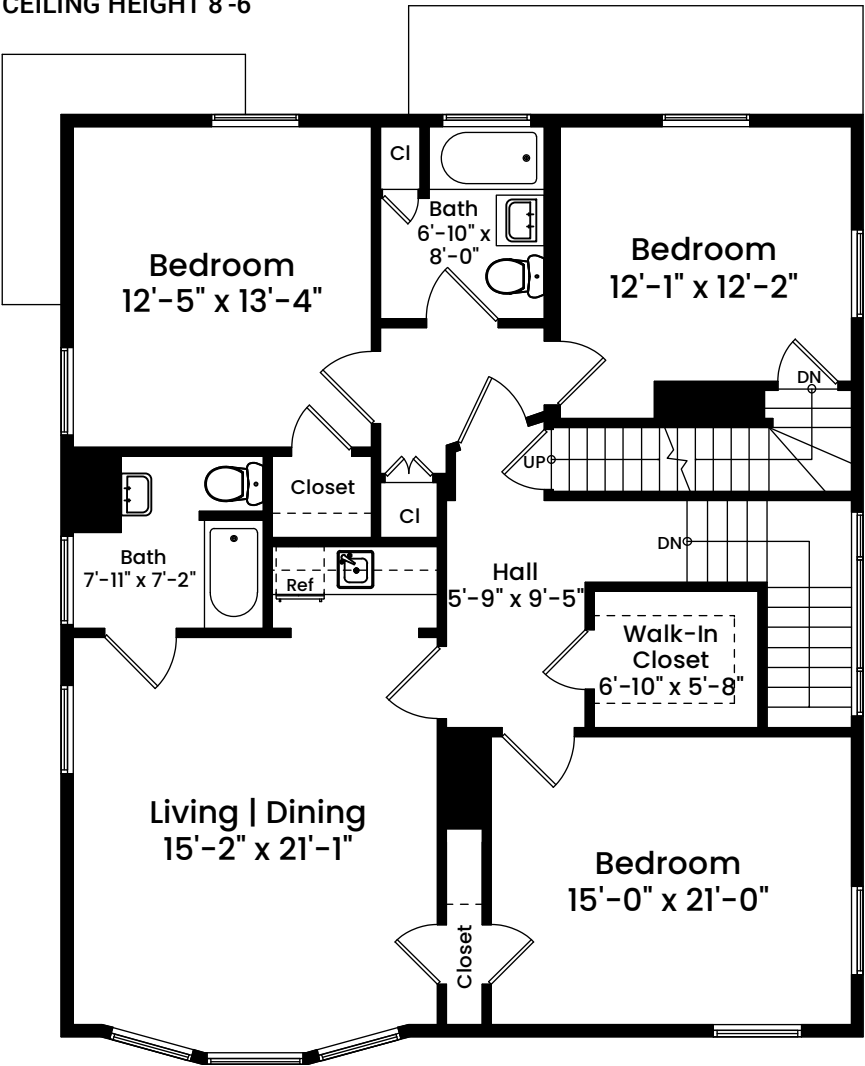


Dimensions are not guaranteed and are provided for informational purposes only.
Individual room dimensions are not used to calculate overall square footage.
National Floor Plans follows ANSI guidelines for calculating square footage.

15-15A Forest Street | Cambridge, MA 02140

SECOND FLOOR

CEILING HEIGHT 8'-6"



AREA CALCULATIONS

First Floor	1,390 SF
Second Floor	1,293 SF
Third Floor	624 SF
Total Gross Living Area	3,307 SF
Basement	1,457 SF
Third Floor Area Below 5'	55 SF
Total Area	4,819 SF

Architecturally drafted in July 2025 by:
National Floor Plans (800) 328-0217
Associate Member | American Institute of Architects
Contact www.nationalfloorplans.com for .dwg AutoCAD files
or square footage questions about this property.

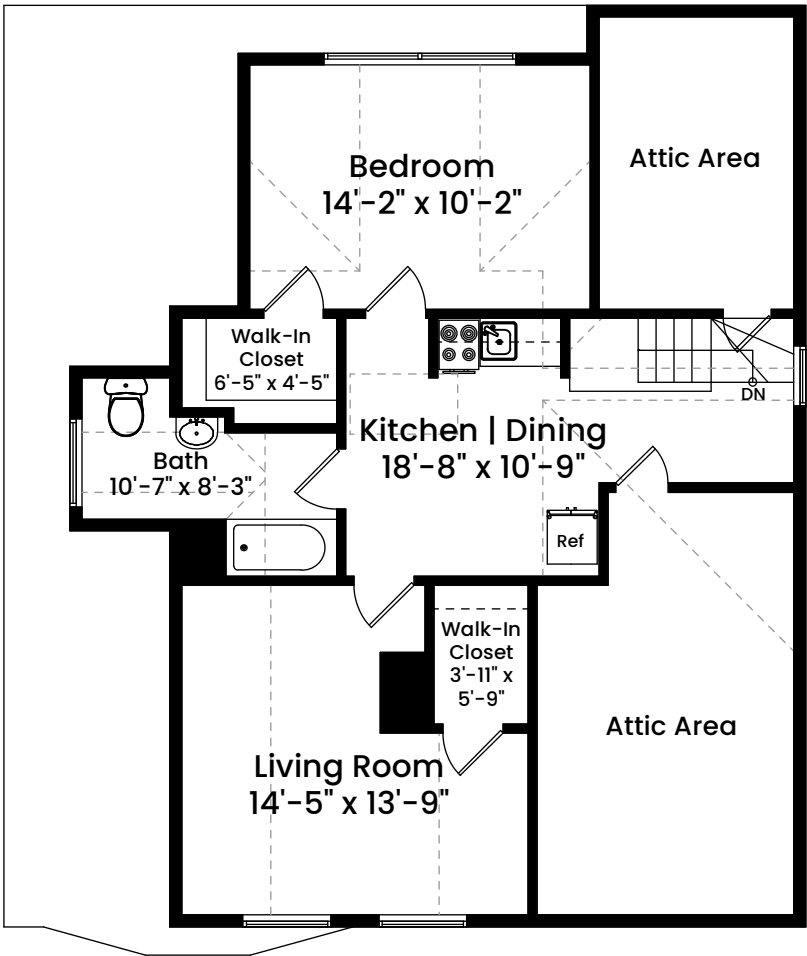


1 1 2 4 8
Scale 1/8" = 1 foot

Dimensions are not guaranteed and are provided for informational purposes only.
Individual room dimensions are not used to calculate overall square footage.
National Floor Plans follows ANSI guidelines for calculating square footage.

15-15A Forest Street | Cambridge, MA 02140

THIRD FLOOR
CEILING HEIGHT 7'-2"



AREA CALCULATIONS	
First Floor	1,390 SF
Second Floor	1,293 SF
Third Floor	624 SF
Total Gross Living Area	3,307 SF
Basement	1,457 SF
Third Floor Area Below 5'	55 SF
Total Area	4,819 SF

Architecturally drafted in July 2025 by:
National Floor Plans (800) 328-0217
Associate Member | American Institute of Architects
Contact www.nationalfloorplans.com for .dwg AutoCAD files
or square footage questions about this property.



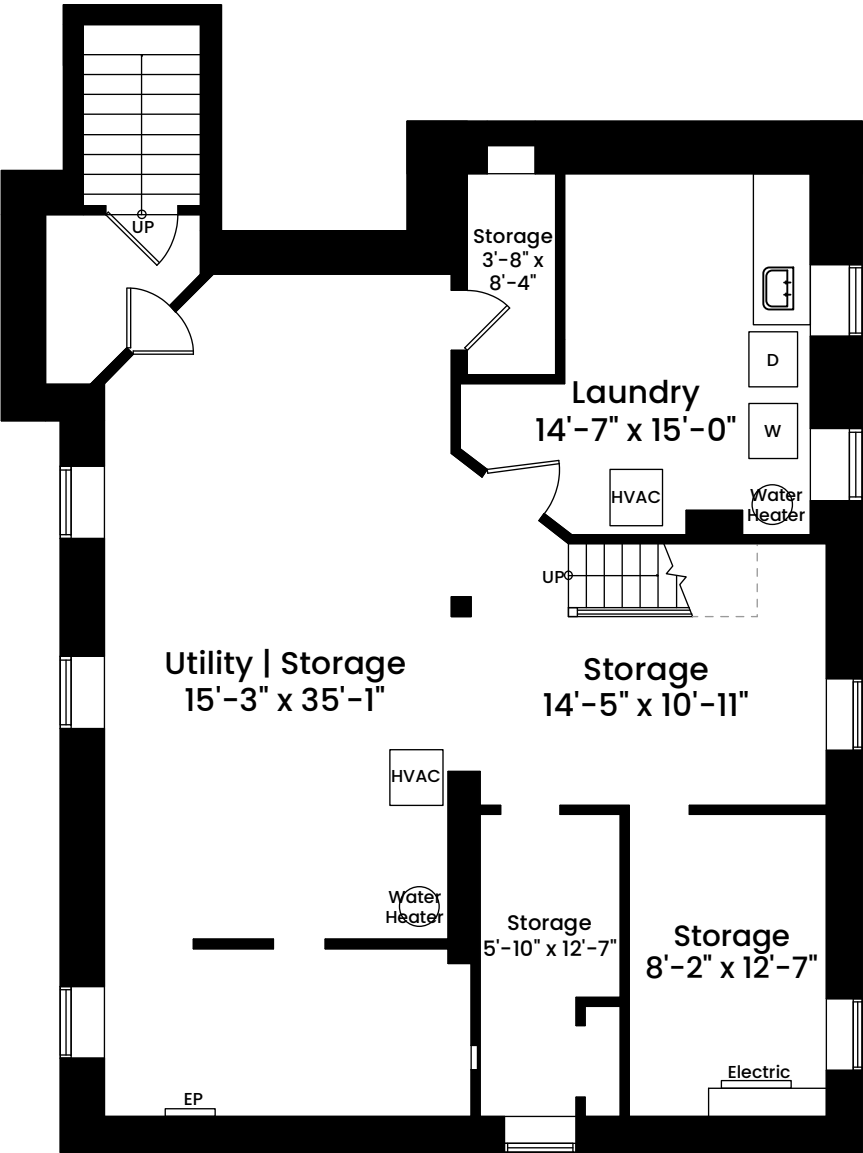
1 1 2 4 8
Scale 1/8" inch = 1 foot

Dimensions are not guaranteed and are provided for informational purposes only.
Individual room dimensions are not used to calculate overall square footage.
National Floor Plans follows ANSI guidelines for calculating square footage.

15-15A Forest Street | Cambridge, MA 02140

BASEMENT

CEILING HEIGHT 7'-10"



AREA CALCULATIONS

First Floor	1,390 SF
Second Floor	1,293 SF
Third Floor	624 SF
Total Gross Living Area	3,307 SF
Basement	1,457 SF
Third Floor Area Below 5'	55 SF
Total Area	4,819 SF

Architecturally drafted in July 2025 by:
National Floor Plans (800) 328-0217
Associate Member | American Institute of Architects
Contact www.nationalfloorplans.com for .dwg AutoCAD files
or square footage questions about this property.



1 1 2 4 8
Scale 1/8" inch = 1 foot

Dimensions are not guaranteed and are provided for informational purposes only.
Individual room dimensions are not used to calculate overall square footage.
National Floor Plans follows ANSI guidelines for calculating square footage.