



# 2 LIBBEY LANE RYE, NH

Tate & Foss | Sotheby's  
INTERNATIONAL REALTY

566 Washington Road, Rye NH

603.964.8028

[LiveSeacoast.com](http://LiveSeacoast.com)





## ABOUT 2 LIBBEY LANE

4  
BEDS

4.5  
BATHS

4,272  
SQ. FT.

1.4  
ACRES

"Sea Orchid" strikes a perfect balance of casual and modern elements. First time offered to market, this architecturally designed, Nantucket style residence, incorporates privacy, abundant sunlight and an interior that seamlessly flows from one room to another. A fully integrated smart home at your fingertips for heating, cooling, lighting and sound. With 4 en-suite bedrooms and 1 half bath, (with 642 sq. ft. of room to expand), this exquisite home has an abundance of custom features & finishes that catch your eye at every turn. The open-concept great room seamlessly connects to a chef's kitchen featuring a 11' X 5' granite island, top-tier cabinets, and a walk-in pantry, all bounded by natural light from large windows and glass sliders. With privacy and entertaining in mind, the backyard was designed with gardens, that include a wrap-around patio, a water feature and specialized evening lighting. For the avid Gardner, an attached, 4 season heated and ventilated greenhouse provides for growing orchids and other plants year round, not to mention a place to wash your dog or change out your wetsuit after a long day of surfing. A small cul-de-sac of five homes, Sea Orchid is tucked away in a serene setting, perfectly situated to Rye Beaches, country clubs, downtown Portsmouth with Rt 95 access to Boston and Portland.

# Property Highlights



- Beautiful beam ceilings and lots of natural light
- Cozy up to the gas fireplace and enjoy a movie with theatre style sound system
- Enjoy monumentos gatherings with family and friends

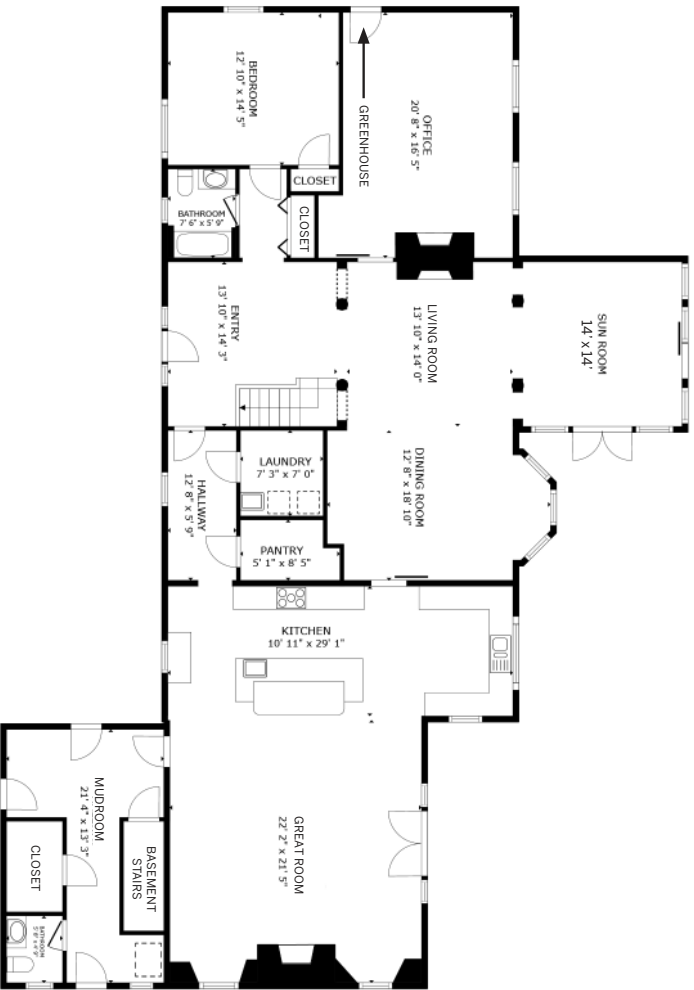


- The patio and landscaping were professionally designed and include a waterfall, lighting, & sound
- Outdoor patio offers amazing features that bring it to life
- Bounded by 250 feet of arborvitae hedge providing absolute privacy

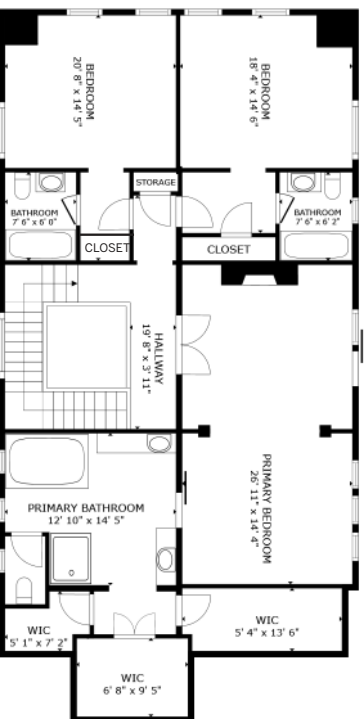


- Spacious updated kitchen is a chef's dream. Large center island provides additional seating
- Many bonuses to this designer kitchen, including dual dishwashers, double ovens, Sub-Zero Refrigerator, and gas cooktop

Subject to errors and omissions. Users are advised to independently verify all information.



FLOOR 1



FLOOR 2

GROSS INTERNAL AREA  
FLOOR 1 2,711 sq.ft. FLOOR 2 1,617 sq.ft.  
TOTAL : 4,328 sq.ft.