



8 VILLAGE OVERLOOK LOOP

One-Level Living in Bee Tree Village Cliffside • Swannanoa



MOSAIC
COMMUNITY LIFESTYLE REALTY

3 Bedrooms, 2 Bathrooms
1,797 SF • 0.17 Acre
MLS #3738628



INFO

8 Village Overlook Loop, Swannanoa, NC 28778

3 Bedrooms, 2 Bathrooms

1,797 Square Feet • 0.17 Acre

MLS #3738628

FEATURES

- Bee Tree Village Cliffside - Tranquil neighborhood showcasing Swannanoa Valley's Appalachian Mountain vistas
- Easy accessibility to I-40, and only ten minutes to Black Mountain and fifteen minutes to downtown Asheville
- Exterior features low-maintenance vinyl siding, stone veneer
- Well-maintained neighborhood with mature landscaping and yard maintenance included with HOA fees
- Beautiful, blooming bushes and newly planted shrubs line the front and back of the property
- City water and sewer
- Publicly maintained roads; minimal traffic – the neighborhood has no “through” streets
- Experience easy, one-level living with an open floor plan between the living, kitchen, and dining rooms
- Kitchen equipped with stainless steel appliances, including a gas oven range, and a breakfast bar for casual dining
- Living room features vaulted ceilings, stone fireplace with gas insert, and direct access to back patio so that you can have full use of the indoor and outdoor areas



Breathtaking Vistas from the Covered Front Porch

- Spacious, screened-in back patio is ideal for relaxing or entertaining
- Raised beds are perfect for a summer garden
- Oversized primary bedroom includes large windows, walk-in closet, ensuite bathroom with granite double vanity, and a walk-in shower
- Guest bathroom with tub, large granite vanity, and tile flooring
- Two spacious bedrooms, each with ceiling fans and ample closet space
- Double garage with additional built-in storage
- High-quality, engineered wood floors and tile throughout
- Newly installed tankless hot water heater



Covered Front Porch



Entryway with a View



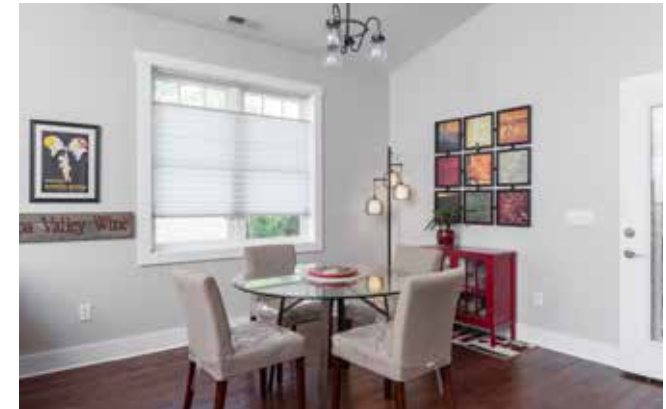
Open Floor Plan Great Room



Gas Log Fireplace with Rock Veneer



Perfect Space for Entertaining



Light and Bright Dining Room



Spotless Kitchen with Breakfast Bar



Beautiful Granite



Gas Oven/Range



LG® Stainless Steel Appliances with Gas Oven/Range



Plenty of Counter Space and Fresh White Cabinets



Indoor/Outdoor Living with Direct Patio Access



Hall Bathroom Entrance



Laundry Room



Gas Tankless Hot Water Heater



Office or Bedroom with Breathtaking View



Lovely Office with Mountain Vistas



Large Closet with Ample Storage



Large Primary Suite with Engineered Wood Floors



Primary Suite Walk-in Closet



Primary Bathroom with Double Vanity, Walk-in Shower



Spacious Guest Bedroom



Double Closet • Soft Light from Double-Hung Window



Large Full Bathroom with Hall and Bedroom Entrances



Two-Car Garage with Additional Built-in Storage



Stunning Front Porch Short- and Long-Range Views

8 VILLAGE OVERLOOK

One-Level Living in Bee Tree Village Cliffside

Swannanoa, NC 28778



Screened-in Porch Overlooks Raised Garden Beds



Relax in Bug-Free Comfort



Lovely Manicured Back Yard



Full-Sun Gardening Area



Raised Beds on Retaining Wall Await Your Green Thumb



Back Yard with Long-Range Views



Enjoy Coffee with a View from the Covered Front Porch



Well-Maintained Front Yard • Extra Parking in Driveway

8 VILLAGE OVERLOOK

One-Level Living in Bee Tree Village Cliffside

Swannanoa, NC 28778



Cozy Bungalow, Perched on the Knoll

Welcome to Bee Tree Village Cliffside, a peaceful neighborhood nestled in the Swannanoa Valley. This well-maintained gem boasts year-round views, and is located just ten minutes from Black Mountain and fifteen minutes from downtown Asheville. You will love sitting on your front porch and enjoying the breathtaking Appalachian Mountain views. Tucked away in the Bee Tree Community, this house combines low-maintenance, one-level living in a peaceful mountain setting. This home is equipped with stainless steel appliances, granite countertops in the kitchen and bathrooms, and a new tankless hot water heater. The main living/dining room opens up to the screened-in back porch, a perfect area to kick back and relax. The newly installed full-sun raised beds are perfect for a summer vegetable and/or flower garden. The two-car garage has additional built-in storage. Enjoy the amenity of the exterior lawn care, provided by the neighborhood HOA.



For more information, please contact:

ELIZABETH PUTNAM

828.301.6374

ELIZABETH@MYMOSAICREALTY.COM

DIRECTIONS

Take I-40 east toward Black Mountain. Take exit 55, and turn left at the end of the ramp. Turn right on US 70 and go 1.6 miles, then take a left at the light onto Warren Wilson College Road. In 2.8 miles, take a sharp left into the Bee Tree community. In 0.4 mile, turn right on Bee Tree Village Parkway/Bee Tree Village Cliffside. Go to the top of the hill onto Village Overlook Loop. Number 8 will be on your left.