



 VIRTUAL TOUR

677 CASE COVE ROAD

Amazing Mini-Farm on 8+ Acres in Candler



MOSAIC
COMMUNITY LIFESTYLE REALTY

3 Bedrooms, 3 Bathrooms
2,713 SF • 8.19 Acres
MLS #3791124



INFO

677 Case Cove Road, Candler, NC 28715

3 Bedrooms, 3 Bathrooms

2,713 SF (1,356 main + 1,356 basement) • 8.19 Acres

MLS #3791124

FEATURES

- Amazing mini-farm in Candler with beautiful pastoral views
- Enveloped by nature, including a peaceful pond, with abundant privacy and only 20 minutes to downtown Asheville
- Airbnb and/or extra building sites potential (buyer to confirm)
- Rustic barn and large storage shed on the property
- Western North Carolina main-level living at its best with an open, flowing floor plan, and gorgeous hardwood and tile throughout
- Driveway approaches well-maintained ranch home with lots of outdoor living that includes a spacious wraparound deck, covered-lower level patio, and an open-air veranda with a hot tub
- Spacious living room with vaulted ceiling, oversized windows for great natural light and a wood-burning stove for chilly evenings
- Updated kitchen features granite countertops, stainless steel appliances, lots of cabinet and counter space and a pantry
- Dining area off of kitchen with space for large table and sliding-door back deck access
- Primary bedroom on main features stunning hardwood floors, back deck access, and an ensuite full bathroom that includes a dual vanity, tiled walk-in shower, and a linen closet



Overflowing with Beauty

- Second bedroom, second full bathroom and a linen closet on the main level
- Fully finished basement with separate entrance ready to entertain family and friends features a spacious living room, one bedroom, two bonus rooms, a laundry closet and plenty of extra storage
- Bedroom in basement with patio access
- Third full bathroom in basement with tub and tiled shower
- Two-car garage, storage shed, and rustic barn for tool/toy storage



Open, Flowing Floor Plan



Lots of Space to Entertain



Bright Living Room Gets Great Natural Light



Vaulted Ceiling and a Wood-Burning Stove



Updated Kitchen Has Ample Cabinet and Counter Space



Connects to Dining Area with Space for a Large Table



Primary Suite with Back Deck Access



Spacious Primary Bedroom



Ensuite Bathroom with Double Vanity and Walk-in Shower



Second Main-Level Bedroom (or Office/Hobby Room)



Second Full Bathroom on Main Level



Daylight Basement Gets Great Natural Light



Separate Entrance, Large Living Room, and Laundry Closet



Great Space to Gather with Family and Friends



Bedroom with Back Patio Access



Second Bonus Room in Basement



Bonus Room/Office



Full Bathroom in Basement



Open-Air Veranda with Built-in Hot Tub



Plenty of Parking



Easy Access to the Main Level of the Home



Sunny Back Deck Is Perfect for Relaxing



Covered Back Patio



Space to Enjoy the Outdoors



Picturesque Approach



Pastoral and Pond Views from the Sunny Back Deck



Two-Car Garage Perfect for Tools and Toys



Peaceful Country Feel, Close to Asheville



Nestled in the Western North Carolina Mountains



Surrounded by Bucolic Splendor



A Small Pond Completes the Serene Setting



Relax and Breathe in the Fresh Mountain Air



Lots of Outdoor Living with a Huge Wraparound Deck

Amazing Candler mini-farm with beautiful pastoral views and a peaceful pond only 20 minutes to downtown Asheville. Enveloped by nature with abundant privacy, this property has potential for an Airbnb and/or extra building sites (buyer to confirm). Western North Carolina main-level living at its best with an open, flowing floor plan that includes a spacious primary suite and ample space to entertain friends and family. Lots of outdoor living that includes a spacious wraparound deck, a covered lower-level patio, and an open-air veranda with a hot tub. Fully finished basement with separate entrance includes one bedroom and two bonus rooms with endless possibilities. Two-car garage, storage shed, and a rustic barn with tack room. Lots of storage for your tools and toys. The 8.19 acres also includes two surrounding lots, PIN#s 96066294450000 and 960672577300000.



For more information, please contact:

CAROL MARIN

828.545.2712

CAROL@MYMOSAICREALTY.COM

DIRECTIONS

FROM DOWNTOWN ASHEVILLE: Take 19/23 West towards Candler. Turn left onto Sand Hill Road. Turn right onto Enka Lake Road. Turn left onto Case Cove Road. In 1 mile, immediately past the white fence, 677 Case Cove Road is on the right. Sign in the yard..



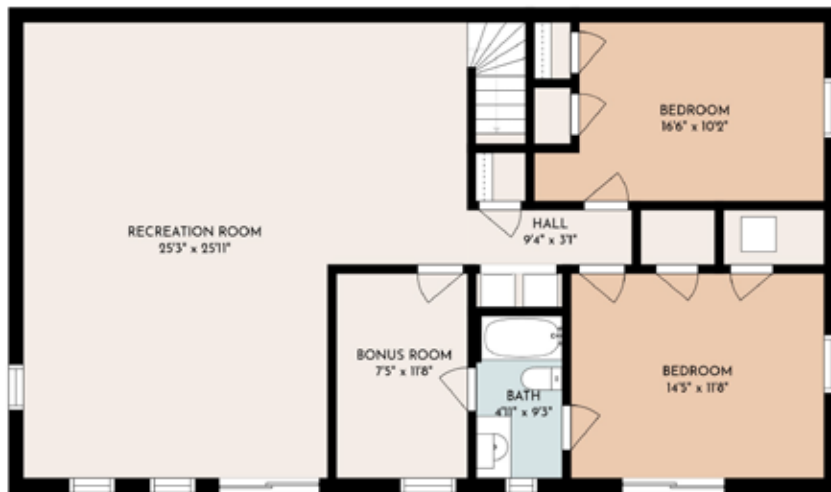
677 CASE COVE ROAD

HEATED LIVING SPACE

Main Level: 1,356.42 SF

Finished Basement: 1,356.42 SF

Total: 2,713 SF (Rounded)



FLOOR 1



FLOOR 2