



27 BROOKCLIFF DRIVE

Gorgeous Home in Desirable Beaverdam Valley • Asheville



MOSAIC
COMMUNITY LIFESTYLE REALTY

3 Bedrooms, 2.5 Bathrooms
1,950 Total SF • 0.74 Acres
MLS #3733509



INFO

27 Brookcliff Drive
Asheville, NC 28804
3 Bedrooms, 2.5 Bathrooms
1,950 SF (Main: 1,197• Basement: 753)
0.74 Acre
MLS #3733509

FEATURES

- Gorgeous home in desirable Beaverdam Valley on a quiet, no thru-traffic street
- Interior designer owned and beautifully updated
- Close to the Blue Ridge Parkway, Merrimon Avenue shopping and dining and minutes to downtown Asheville
- Lovely walkable neighborhood with picturesque views
- Large backyard with a significant portion fully fenced for pets and play and a stone patio with fire pit ready for gatherings
- Open, flowing floor plan
- Covered front porch with new deck railings is perfect for neighborhood gazing
- Inviting entry opens to spacious living room with built-in shelving and modern ceiling fan
- Updated kitchen features quartz countertops, stainless steel appliances, counter-to-ceiling tile backsplash, commercial grade water filter at kitchen sink, and an island with breakfast bar that connects with dining area



Lots of Outdoor Living

- French doors from dining area open to screened back porch with vaulted ceiling ready to relax with friends and family
- Renovated primary suite features a vaulted tongue-and-groove ceiling, rough-hewn posts and beams, large picture window, built-in closets and an updated ensuite bathroom with new walk-in shower
- Second bedroom, second full bathroom, linen closet, and coat closet on main level
- Finished basement with separate entrance features a stone-surround fireplace (non-functional), one bedroom with two closets, a powder room, laundry room and plenty of extra storage
- Oversized one-car garage and backyard shed for tool and toy storage

UPDATES

- **Main:**
 - Quartz counters in the kitchen
 - Floating shelves in the kitchen
 - Refreshed kitchen cabinets
 - Newer kitchen appliances
 - Newer plumbing fixtures throughout the home
 - New interior door hardware
 - Fresh interior paint
 - Updated light fixtures and ceiling fans throughout
 - Updated main level bathroom
 - Newer primary suite flooring and drywall and remodeled ensuite bathroom including new shower
- **Basement (fully redone):**
 - New drywall
 - New luxury vinyl tile (lvt) flooring
 - Fresh paint, new ceiling fan and updated powder room
- **Exterior:**
 - Fresh paint and new front deck railings



Quartz Countertops, Stainless Steel Appliances, and an Island with Breakfast Bar



Spacious Covered Front Deck with Picturesque Views and New Railings



Built-In Shelves at Entry



Inviting Entry Opens to Spacious Living Room



Bright Main Level Living Room



Open, Flowing Floor Plan



Dining Area Off of the Kitchen



French Doors Open to Screened Back Porch



Screened Back Porch with Vaulted Ceiling



Kitchen Has Lots of Counter, Cabinet, and Shelf Space



Beautiful Counter-to-Ceiling Tile Backsplash



Renovated Primary Suite



Sliding Barn Door for Privacy



Built-In Closet and Tongue-and-Groove Vaulted Ceiling



Ensuite Bathroom with New Tiled Walk-In Shower



Bedroom with Neighborhood View



Second Full Bathroom on Main Level



Finished Basement is Open and Bright



Second Living Room with Stone-Surround Fireplace



Powder Room in Basement



Laundry Adjacent to Powder Room



Oversized One-Car Garage for Extra Storage



Stone Patio with Fire Pit Ready for Friends and Family



Shed for Tool and Toy Storage

Gorgeous home in the desirable Beaverdam Valley on a quiet, no thru traffic street, close to the Blue Ridge Parkway, Merrimon Ave shopping and dining and minutes to downtown Asheville. Owned by a local interior designer, this beautifully updated home is located in a picturesque community with mountain views and fabulous neighbors. Stunning primary suite boasts exposed beams, a vaulted beadboard ceiling and a remodeled ensuite bathroom. Recent updates include fresh exterior and interior paint, new quartz counters, newer kitchen appliances and a remodeled 2nd full bath. Remodeled walk-out basement features a stone-surround fireplace (non-functional), one bedroom with two closets, a powder room and laundry room. Enjoy outdoor living from your spacious covered front deck, screened covered back porch and or the backyard stone patio that is ready for gatherings with friends and family. One-car oversized garage and backyard shed for plenty of extra storage.



For more information, please contact:

MIKE FIGURA

828.337.8190

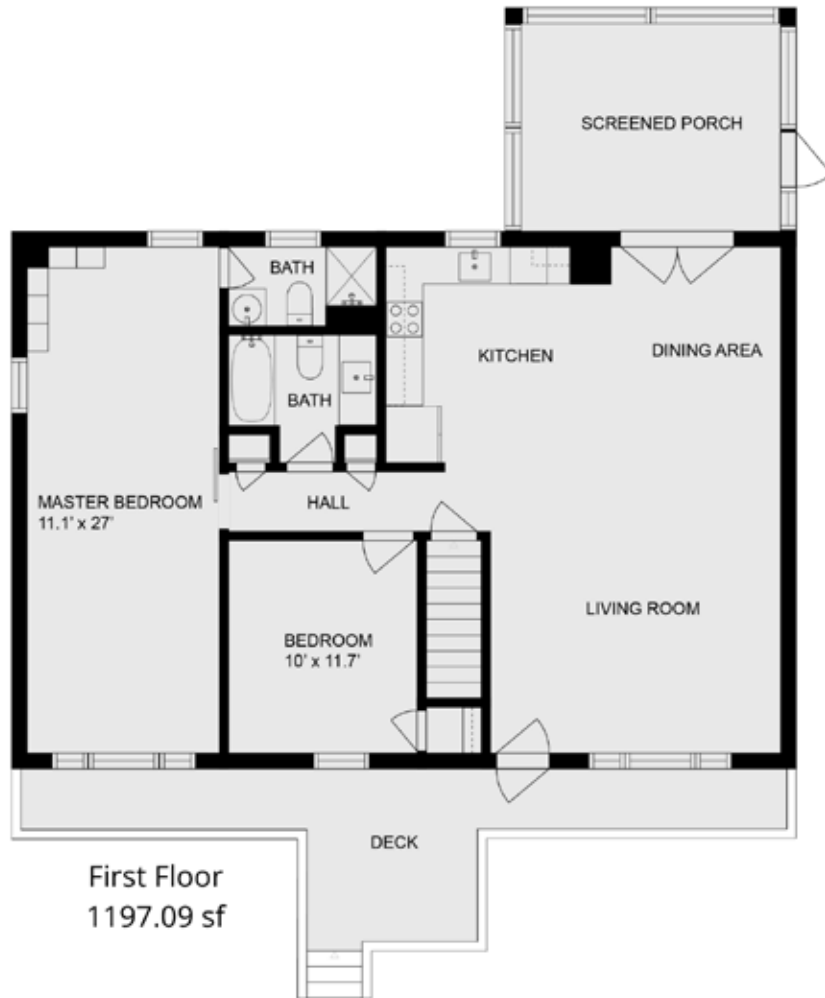
MIKE@MYMOSAICREALTY.COM

DIRECTIONS

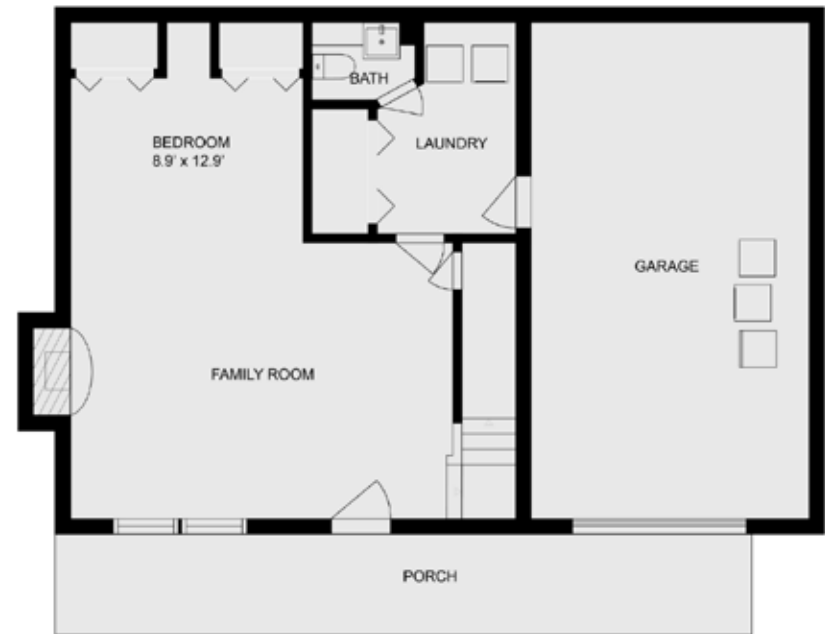
FROM DOWNTOWN ASHEVILLE: take Merrimon Avenue north, Turn right onto Beaverdam Road. In 1.8 miles (past big cemetery on right), turn left onto Faircrest Road. Turn right onto Brookcliff Drive. 27 Brookcliff Drive is on the right. Sign in the yard.



27 Brookcliff Dr



First Floor
1197.09 sf



Finished Basement
752.78 sf

Heated Living Space

First Floor - 1197.09 sf

Finished Basement - 752.78 sf

Total - 1950 sf (rounded)

