



 VIRTUAL TOUR

## 9 WILSON LANE

Beautiful, Well-Maintained Tri-Level Home



**MOSAIC**  
COMMUNITY LIFESTYLE REALTY

3 Bedrooms, 2 Bathrooms  
2,142 SF • 0.46 Acre  
MLS #3844460



## INFO

9 Wilson Lane, Fletcher, NC 28732

3 Bedrooms, 2 Bathrooms

2,142 SF • 0.46 Acre

MLS #3844460

## FEATURES

- Fantastic tri-level home in the wonderful Fairview/Fletcher community of Woodridge
- Numerous updates throughout, including main-level hardwood floors, new carpeting, accent walls, and an expansive back covered porch
- Meticulously maintained house and grounds, featuring approximately 0.5-acre lot with mature tree cover for privacy and ambiance
- Large front porch welcomes you through the entryway and into the spacious, but cozy, main-level living area with floor-to-ceiling stone fireplace
- Main level features open living space with updated hardwood floors, easy kitchen-to-dining-to-living access, custom wood mantel, and shiplap/wainscoting accent walls
- Well-maintained kitchen with upgraded appliances and showering sky light awaits your finishing touches
- Spacious dining area opens up to incredible covered back porch for amazing indoor/outdoor living, featuring two distinct levels for relaxation and gathering



Spectacular Covered Porch Addition

- Covered porch features prime access to the expansive back yard, fully equipped with a zipline, Lifetime® playset, firepit area, and large storage shed
- Upper portion of main level is where you will find all three bedrooms and two full bathrooms for convenient living, including the primary bedroom with ensuite bath
- The lower level boasts an expansive additional family/great room with a custom office nook and a corner fireplace
- Laundry room with updated flooring and exterior access and over 500 SF of unfinished storage space round out the lower level
- Spacious carport and driveway allow for ample parking and easy kitchen access



Warm and Modern Living Area with Stone Fireplace



Lots of Natural Light in Main-Level Living



Amazing Accents and Touches



Easy Kitchen-to-Dining-to-Living Access



Spacious Kitchen with Bar Seating, Upgraded Appliances



Dining Space off Kitchen with Beautiful Accent Wall



Indoor/Outdoor Living off Dining Area



Access to Upper and Lower Levels Near Dining Area

**9 WILSON LANE**  
Beautiful, Well-Maintained Tri-Level Home  
Fletcher, NC 28732



Primary Bedroom with Ensuite Bathroom



Suite Features Full Bath and a Vanity Counter/Small Desk



Primary Suite Bathroom



Bedroom #2



Bedroom #3



Upper-Level Full Bathroom



Spacious Lower Level with Stone Fireplace



Custom Built-in Office • Unfinished Storage Access



Laundry Area with Exterior Access and Storage Room



More than 500 SF of Storage with Plentiful Shelving



Spend Your Days and Nights Relaxing on the Back Deck



Custom Swing and Zipline Highlight the Deck Addition



Perfect Gathering Area for Friends and Family



Rear Exterior Firepit



Lifetime® Playset for the Kids



Backyard Aerial Shot



Carport and Gravel Circle Drive Offer Ample Parking

**9 WILSON LANE**  
Beautiful, Well-Maintained Tri-Level Home  
Fletcher, NC 28732



Large Front Porch and Mature Tree Coverage

Welcome home to this beautiful and meticulously maintained tri-level home in Fairview, perfect for the family or as a second home/vacation rental. Enjoy all that this incredible property has to offer, including numerous interior updates, a spacious lot (approx. 0.5 acre), a spectacular rear covered deck addition, and a firepit. The home features three distinct but functional levels, with the main floor serving as a wonderful gathering place for friends and family alike. Two stone fireplaces, beautifully crafted accent walls, and a spacious lower level are just a few of the fabulous features that will draw you in. Whether it's enjoying the game and a cool night on the back deck, or taking a ride on the zip line, this incredible home has so much to offer! Listing agent related to seller.



For more information, please contact:

**WILSON HOOD**

828.545.0551

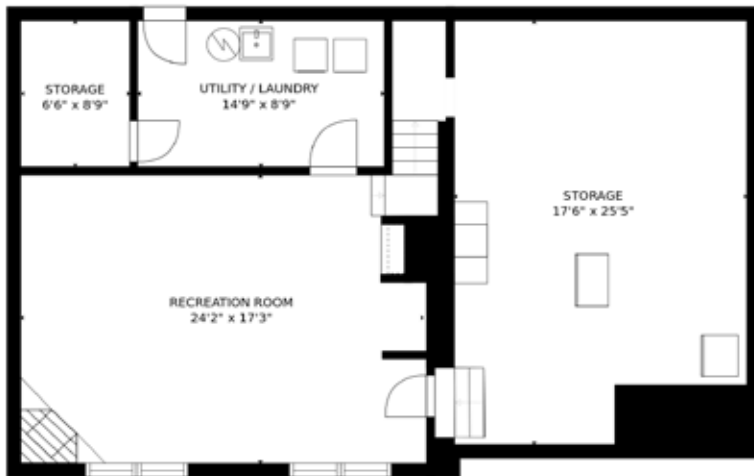
WILSON@MYMOSAICREALTY.COM

#### DIRECTIONS:

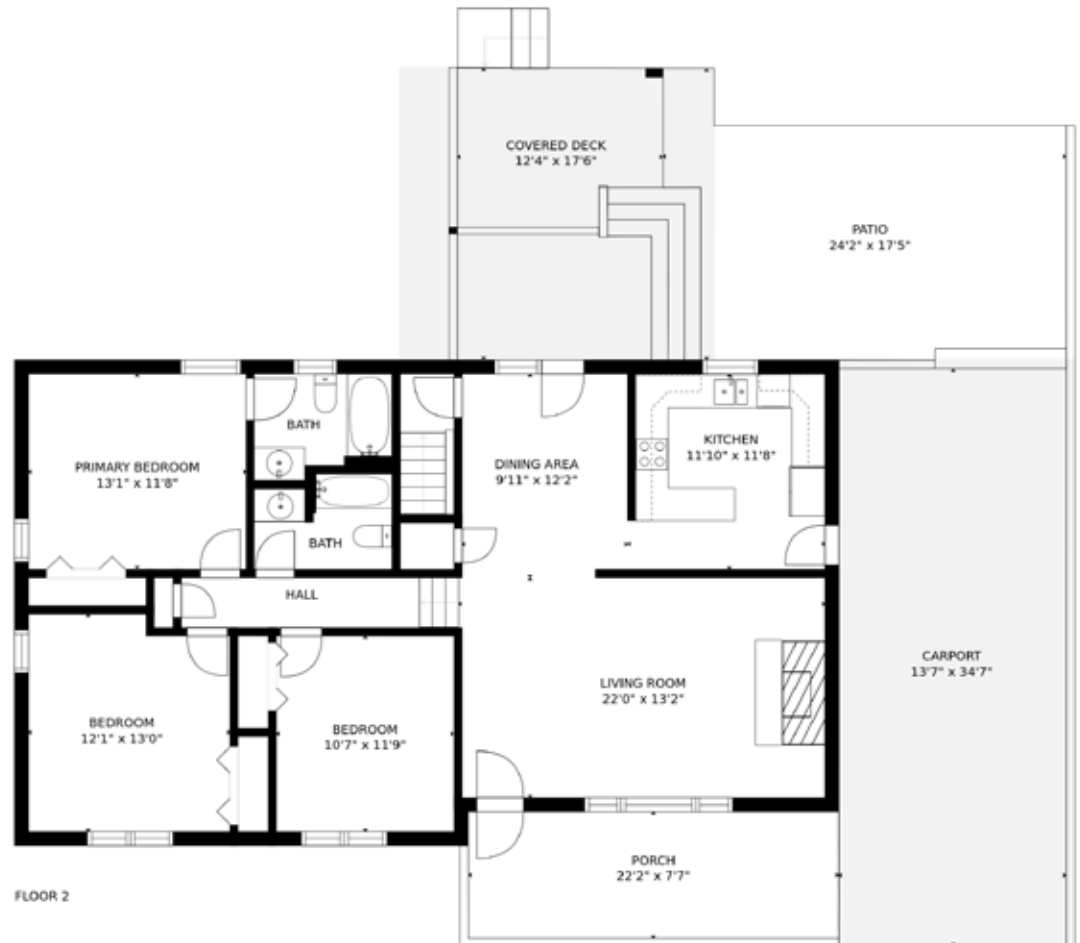
FROM ASHEVILLE: Follow I-240E and 74A for 9.7 miles to a right on Emmas Grove Road. Follow Emmas Grove Road for 2.4 miles to a right onto Wilson Lane. Continue on Wilson Lane for 0.1 mile; house is on the left.



**9 Wilson Lane**  
Fletcher, NC



FLOOR 1



FLOOR 2