



274 WHITE PINE LANE

Spacious Cape Cod on a Wooded Acre • Burnsville



MOSAIC
COMMUNITY LIFESTYLE REALTY

3 Bedrooms, 3.5 Bathrooms
2,453 SF • 1.35 Acres
MLS #3874721



INFO

274 White Pine Lane, Burnsville, NC 28714

3 Bedrooms, 3.5 Bathrooms

2,453 Square Feet • 1.35 Acres

MLS #3874721

FEATURES

- Spectacular long-range, year-round mountain views
- Enjoy watching abundant wildlife from the partially covered wraparound porch with ceiling fans
- Gorgeous knotty pine walls
- Floor-to-ceiling Kentucky fieldstone fireplace
- Large, wood-framed, double-pane windows for great natural light
- Solid wood interior doors
- Kitchen has custom cabinetry, ample countertop space, and efficient work zones
- Large primary bedroom has walk-in closet and an ensuite bathroom with a garden tub
- Cherry hardwood floors upstairs; hickory floors downstairs
- Slate floor in downstairs bathroom
- Workshop/craft room in basement
- Oversized two-car garage with work benches, storage, and sink
- Whole-house UV water filter system



Peaceful and Tranquil Setting, Nestled in the Woods

- New well pump installed in 2021
- Tankless water heater
- Backup generator
- Peaceful and tranquil setting
- Plenty of land for your garden, pets, and play
- Beautiful morning sunrises
- Partially fenced yard



Large Covered Front Deck



Living Room Looking into Dining Area with Loft Above



Cozy Living Room with Floor-to-Ceiling Knotty Pine



Floor-to-Ceiling Kentucky Fieldstone Fireplace



Dining Room with Access to Deck



View from Dining Area to Kitchen



Custom-Made Pine Cabinets in Kitchen



Efficient Kitchen Layout



View from Kitchen into Laundry/Mudroom



Spacious Primary Bedroom on Main with Hickory Floors



Ensuite Primary Bathroom with Garden Tub



Convenient Double-Sink Vanity in Primary Bathroom



Loft View over Living Room



Upper-Level Landing with Beautiful Cherry Flooring



Loft Sitting Area above Living Room



Light and Bright Upper-Level Bedroom



Large Upstairs East-Facing Bedroom



Spacious Upstairs Bathroom



Climate-Controlled Flex Room in Basement



Two-Bay Basement-Level Garage



Plenty of Parking Inside and Outside the Two-Car Garage



Spacious Wraparound Deck on Main Level



Beautiful Trees and Mature Landscaping



Vehicle-Accessible Yard



Fenced Side Yard



Spacious, Mostly Level Yard



Perfect Location for Vacation Home or Every Day Living



Welcome Home to the Mountains!

Wonderful mountain getaway! Located approximately 40 minutes from Asheville and 15 from Burnsville, this spacious home provides serenity and convenience. Watch sunrises over the distant mountains from your wraparound porch, while you soak in the sounds of nature in this quiet mountain community. Floor-to-ceiling knotty pine complements the mixed hardwood flooring in this Cape Cod-style home. Main-level primary bedroom has an ensuite bathroom with a tiled shower and large garden tub. Spacious loft above the living room allows for additional flex space. Large two-car garage, additional climate-controlled bonus rooms in lower level provide options for storage, utility, and crafting. Large, level yard space allows for gardening and outdoor recreation. Surrounded by mountains, this home would make the perfect location for vacation or everyday living.



For more information, please contact:

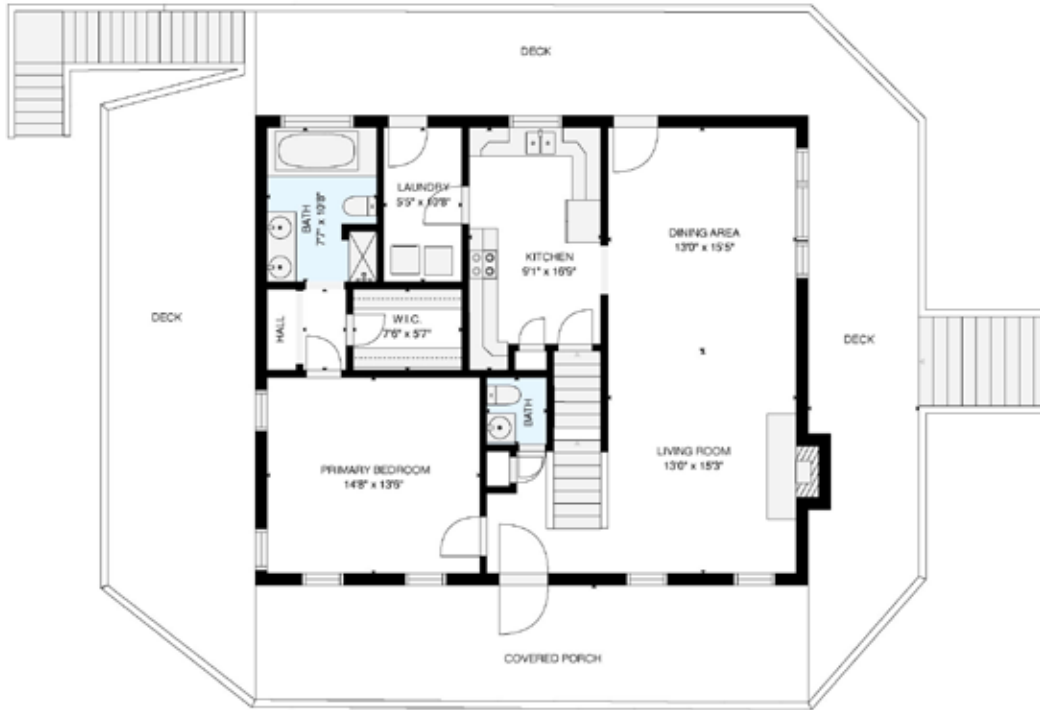
SHANE PETERS

828.691.9267

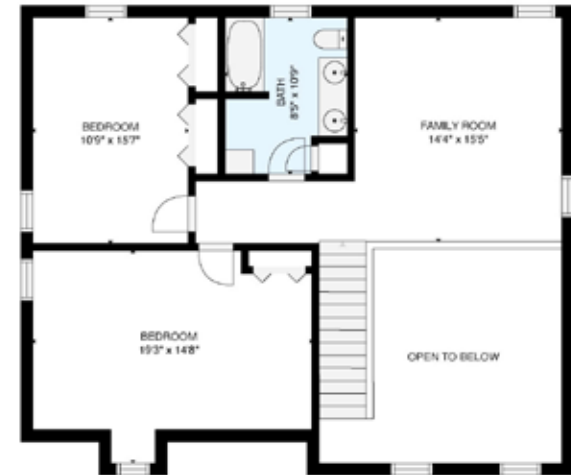
SHANE@MYMOSAICREALTY.COM

DIRECTIONS

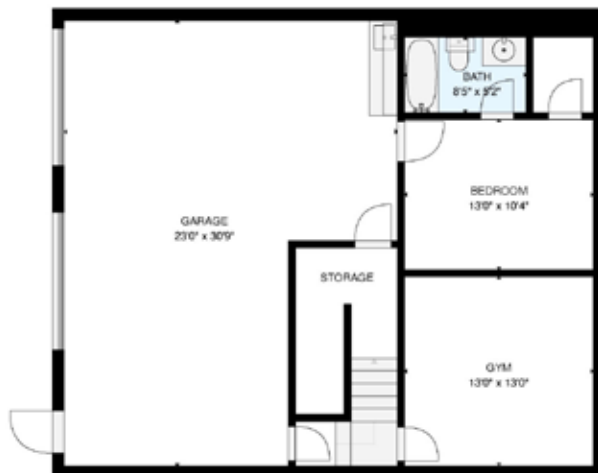
FROM ASHEVILLE: Take I-26 to exit 9 toward Burnsville for approx. 18 mi. Turn right onto Prices Creek Rd, then left on Norton Creek Rd. In 1.2 mi, turn left on Prices Creek Rd, and in 0.5 mi, turn right on Daisyfield. Cross bridge. Continue up mountain and turn left on White Pine Dr. House is the blue one on the right at the top. Follow signs. AWD or 4WD recommended, but not necessary. Mountain road is narrow once inside the community.



FLOOR 2



FLOOR 3



Estimated areas

GLA Above Grade (2166 sq. ft.)

FLOOR 2: 1234

FLOOR 3: 932

GLA Below Grade (465 sq. ft.)

FLOOR 1: Bedroom Suite 266, Gym 199

Total GLA 2632 sq. ft.

Total scanned area 4883 sq. ft