



 VIRTUAL TOUR

25 VIVIAN AVENUE

Well-Maintained Craftsman-Style Home • Five Points



MOSAIC
COMMUNITY LIFESTYLE REALTY

4 Bedrooms, 3 Bathrooms
2,108 SF • 0.13 Acre
MLS #3879355



INFO

25 Vivian Avenue, Asheville, NC 28801

4 Bedrooms, 3 Bathrooms

2,108 SF • 0.13 Acre

MLS #3879355

FEATURES

- Well-maintained Craftsman-style home, located in a private, serene setting adjacent to UNCA walking trails and conveniently close to downtown Asheville's award-winning shopping, dining, and entertainment
- Perfect blend of urban and nature, this home boasts a quiet, wooded setting with access to a plethora of city amenities and easy connection to the greenway and area trails
- Rare urban oasis surrounded by mature trees and native wildlife
- Three levels and lots of outdoor living for endless possibilities
- Thoughtful details include a NEST thermostat, oversized gutters
- Southern-style, covered front porch with access to the fully fenced side yard
- Inviting entry with soaring ceiling
- Bright living room with gas fireplace, ready for entertaining
- Chef's kitchen features stainless steel appliances, Shaker cabinets with crown molding, and island with spacious breakfast bar
- Dining area near kitchen has space for large table and offers back deck access



A Perfect Place to Work or Relax

- Sunny back deck with wooded view is perfect for al fresco dining
- Two bedrooms, one full bathroom, laundry closet, and coat closet on main level
- Sun-filled stairs lead to private primary suite that features vaulted ceilings, LVP flooring, two closets, extra attic storage, and an ensuite full bathroom that includes granite countertops and a tiled, walk-in dual shower
- Sitting area is perfect for afternoon tea and a good book
- Finished basement/mother-in-law suite features a spacious bedroom, full bathroom, utility room, and garage/workshop access
- Oversized one-car garage and workshop await the hobby enthusiast



Open, Flowing Floor Plan



Bright Living Room with Ceiling Fan and Gas Fireplace



Space for Entertaining



Spacious Breakfast Bar



Stainless Steel Appliances • Cabinets with Crown Molding



Dining Area off of Kitchen has Back Deck Access



Laundry Closet on Main Level



Full Bathroom on Main Level

25 VIVIAN AVENUE
Well-Maintained Craftsman-Style Home
Asheville, NC 28801



Bedroom with Gorgeous Hardwood Floors



Second Main-Level Bedroom Makes a Great Office



Primary Suite Features Vaulted Ceiling and Two Closets



Cozy Sitting Area Is Perfect for Reading a Good Book



Ensuite Bathroom's Vanity Has Granite Countertops



Elegant Soaking Tub, Ready for Relaxing



Tiled, Walk-in Dual Shower



Basement Bedroom • Wood Floors and Garage Access



Stylish Full Bathroom with a Tiled, Walk-in Shower



Sunny Back Deck With Wooded Views



Covered Back Deck for Lazy Days



Garage/Workshop Is Perfect for the Hobby Enthusiast



Two-Tiered Deck and Plenty of Parking



Lots of Outdoor Living

Well-maintained Craftsman-style home, located in the Five Points neighborhood, adjacent to UNCA walking trails and conveniently close to downtown Asheville. A perfect blend of urban and nature, this home boasts a quiet, wooded setting with access to a plethora of city amenities. Sit and relax on this oasis' Southern-style covered front porch, surrounded by soaring, mature trees and native wildlife. Lots of outdoor and three-level living — endless possibilities include the two-tiered back decks and plenty of space to plant and play. The well-adorned chef's kitchen and bright living room yearn to entertain friends and family. Two bedrooms, a full bathroom, a laundry closet, and coat closet on the main level. The private primary suite features a vaulted ceiling, treetop views, two closets, and an ensuite full bathroom that includes a magnificent soaking tub and tiled, walk-in dual shower. Finished basement with separate entrance through the garage/workshop features a spacious bedroom and stylish full bathroom that could make a great mother-in-law suite. Oversized one-car garage/workshop is perfect for the hobby enthusiast.

YouTube

VIRTUAL
TOUR



For more information, please contact:

TRIP HOWELL

828.450.4792

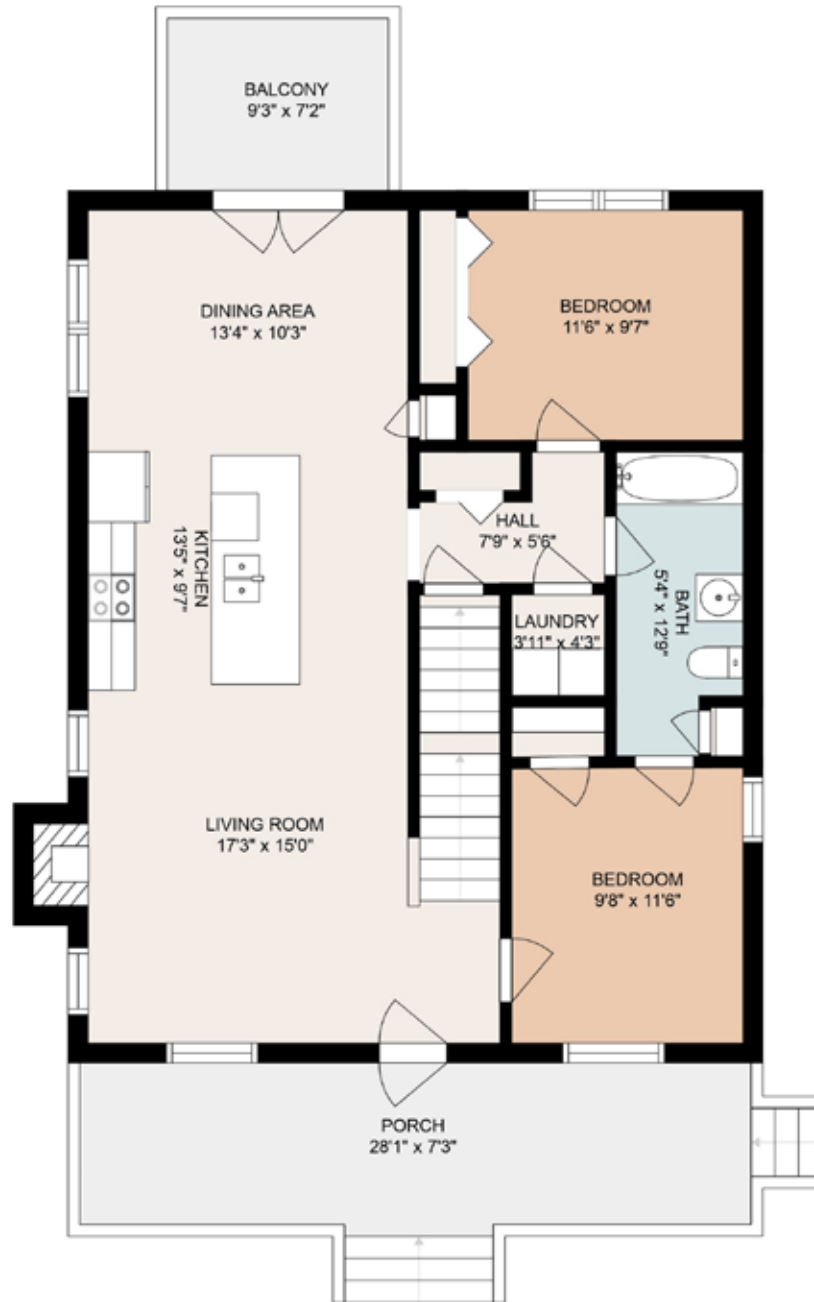
TRIP@MYMOSAICREALTY.COM

DIRECTIONS

From downtown Asheville, take Merrimon Avenue north. Turn left onto Hillside Street. Take a sharp right turn onto Mt. Clare Avenue. Turn left on Dortch Avenue. Turn right onto Vivian Avenue. 25 Vivian Avenue is on the right. Sign in the yard.

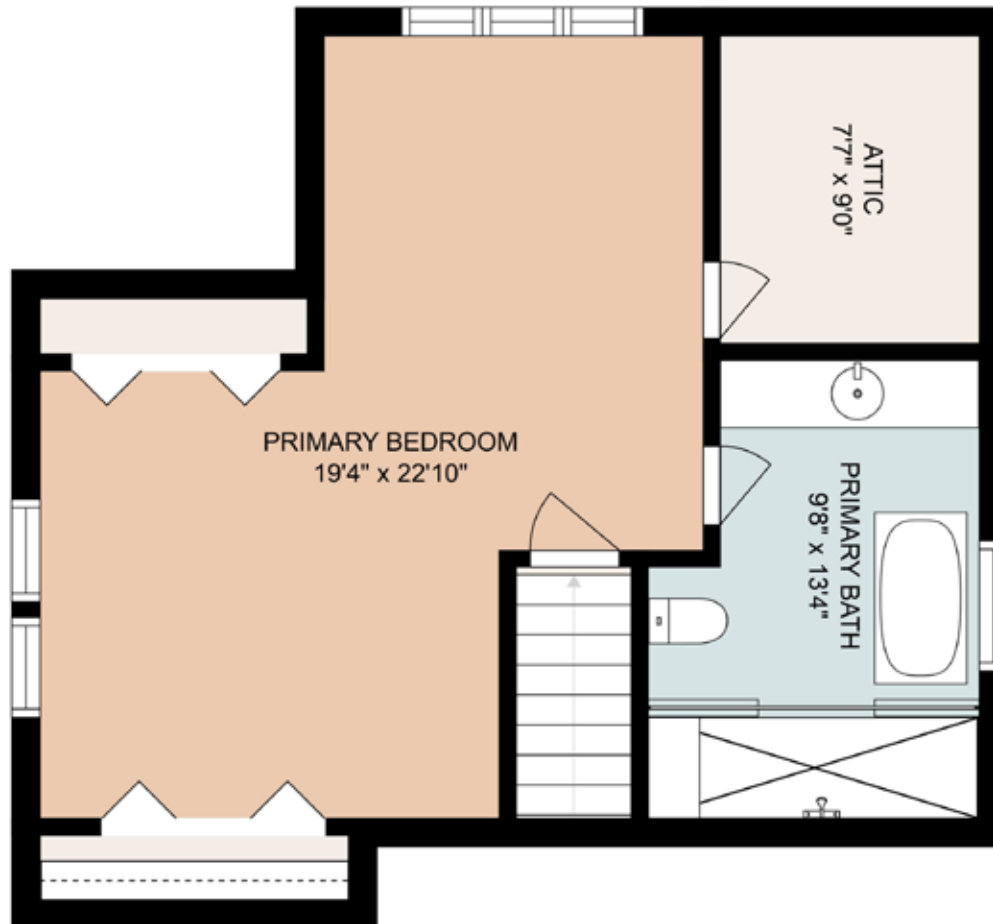


MAIN LEVEL





SECOND LEVEL





BASEMENT LEVEL

