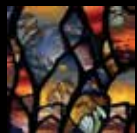




12 SUNSET DRIVE

Arts and Crafts Style Greenbuilt Home • Amazing Location



MOSAIC
COMMUNITY LIFESTYLE REALTY

3 Bedrooms, 2½ Bathrooms
1,994 SF • 0.03-Acre Lot
MLS #4021778

INFO

12 Sunset Drive, Asheville NC 28804

3 Bedrooms, 2½ Bathrooms

1,994 Square Feet, 0.03 Acre Lot

MLS #4021778

FEATURES

- Amazing location off Charlotte Street, less than 1 mile into downtown
- Quality finishes abound in this move-in ready lock-n-leave home
- Incredible outdoor living with three levels of decks and screened porches
- City and mountain views while surrounded by mature trees
- Flowing open floor plan with high ceilings
- Lots of big windows for amazing natural light
- Coat closet and powder room in entry hall
- Chef's kitchen with tons of cabinets and pantry
- High quality Thermador appliances including gas range
- Movable kitchen island with breakfast bar
- Cozy gas fireplace in main living area
- French doors open to screened-in porch for three-season living
- Screened barn doors lead to open deck area for grilling and getting sun
- Upper level primary suite with vaulted ceiling and bonus/office area
- Primary bath has tiled walk-in shower, soaking tub and double vanity
- Large walk-in closet with custom shelving system and W/D hookups
- Upper level deck off primary suite provides great year round views
- Full-daylight, walk-out, lower level
- Two spacious bedrooms in lower level, both with large closets
- Both bedrooms exit to spacious ground-level screened-in porch
- Full bath on lower level with double vanity and tiled tub/shower



Lovely Front Entry to 12 Sunset Drive

- Plantation shutters throughout the home
- Upgraded high-end light fixtures
- Small fenced pet area
- Composite decking on all exposed outdoor decks
- Ample attic storage via pull-down stairs
- Gas furnace with central air, zoned by floor
- Gas on-demand hot water heater
- Nest smoke and CO2 detectors on all levels
- Hardiboard siding with cedar shake accents
- Parking pad with two dedicated spaces
- GreenBuilt and Energy Star home
- HOA fees include water, sewer, trash removal, and mowing



Built-ins and Coat Closet in Front Entry



Entryway into Main Living Area



French Doors Expand the Living Space to Outside



Beautiful Open Kitchen is Perfect for Entertaining



Dining Area with Built-in Sideboard



The Perfect Kitchen for the Home Chef



Thermador Appliances and High Quality Wood Cabinets



Kitchen Island with Breakfast Bar



Upgraded Lighting Throughout the Home



Light and Bright Main Living Area



The Perfect Conversation Place



Cozy Gas Fireplace Warms the Main Living Area



Access to Screened-in Porch



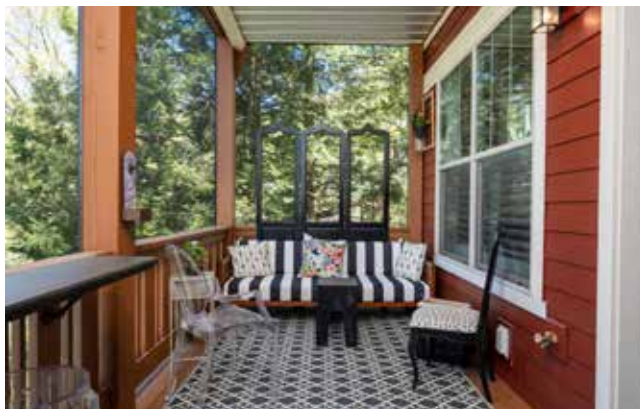
Open Floor Plan with High Ceilings



Convenient Half Bath on Main



Screened-in Porch on Main Level Adds Living Space



Three Season Living



Barn Doors Lead to Open Deck Area



Landing is Light and Bright



Entire Upstairs is Spacious Primary Suite



Vaulted Ceilings in Primary Suite



Primary Suite Exits to Private Deck



Double Vanity in Primary Suite Bathroom



Deep Soaking Tub



Fully Tiled Walk-in Shower with Frameless Door



Walk-in Closet with Custom Organizers



Bonus Sitting/Office Space in Primary Suite



Washer and Dryer Convey - Upstairs Hook-ups As Well



One of Two Lower Level Bedrooms



Both Bedrooms Exit to Screened-in Porch



Plantation Shutters Throughout the Home



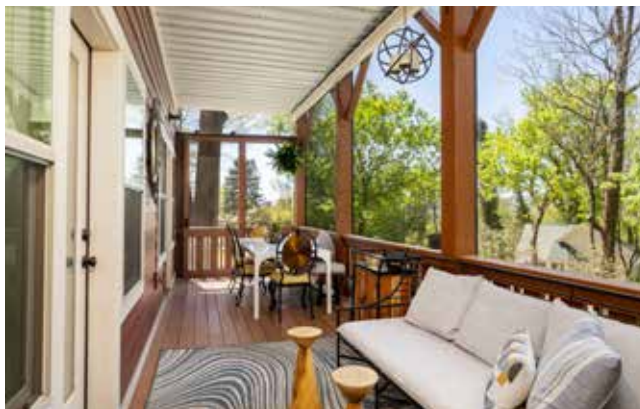
Lower Level Bedrooms Easily Fit Queen Beds



Shutters Open for Additional Light



Full Bath on Lower Level



Large Lower Level Screened-in Porch



Surrounded by Mature Trees and Mountain Views



Lots of Amazing Outdoor Living Space



Beautiful View Full of Greenery



Catch Some Sunshine on the Open Deck Upstairs



Beautiful Mountain Views, too!

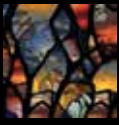


Deck Views of Mountains and Downtown

12 SUNSET DRIVE

Arts and Crafts Style Greenbuilt Home

Asheville, NC 28804



Two Off-Street Parking Spaces

Located just steps to downtown Asheville, you'll fall in love with this move-in ready 3BR/2.5BA Arts and Crafts style Greenbuilt home. The open floor plan features a chef's kitchen with Thermador appliances and gorgeous wood cabinets, plus a cozy gas fireplace to enjoy from the living and dining areas. You'll be blown away by the three levels of decks and screened in porches for relaxing and taking in the city and mountain views. Spacious upper-level primary suite features vaulted ceilings with a sitting/office area, walk-in closet with W/D hookups plus an amazing light-filled bathroom. Downstairs you'll find two more bedrooms, a full bath, the washer/dryer and lots of extra storage space. Light and bright on every level, you'll feel the quality the minute you step inside this comfortable home. Water, sewer, trash and mowing covered by the HOA in this perfect lock-n-leave home. But don't believe me, come see it for yourself today!



For more information, please contact:

ALYSSA AUGUSTINE

828.633.5051

ALYSSA@MYMOSAICREALTY.COM

DIRECTIONS

From Charlotte Street heading north, RIGHT on Baird Street (next to Jettie Rae's). LEFT at the top of the hill. HOME is on the LEFT. PARKING Pad to the RIGHT of the house.

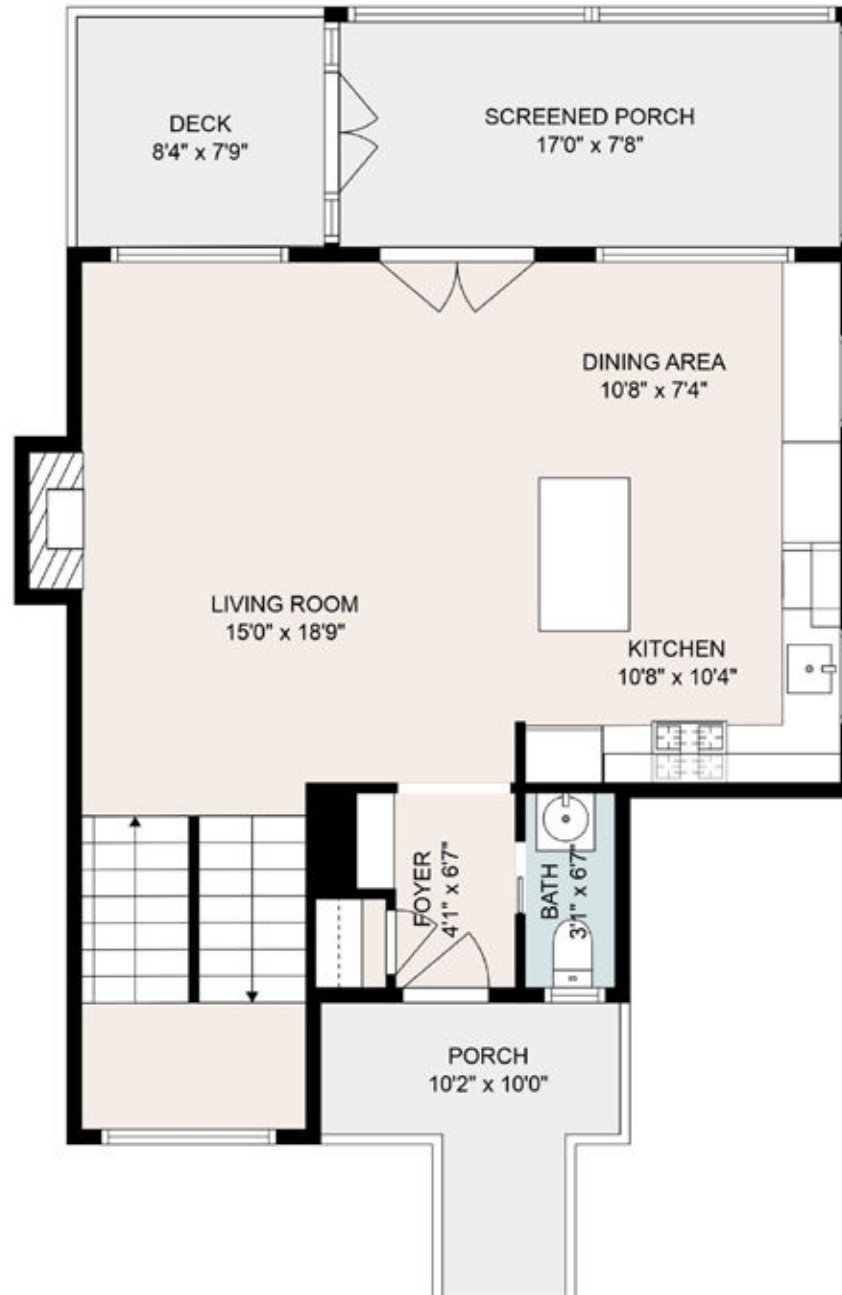


LOWER LEVEL





MAIN LEVEL





UPPER LEVEL

