



 VIRTUAL TOUR

1747 SECLUDED VALLEY ROAD

Lovingly Updated Home on 6.44 Acres in Little Pine • Marshall



MOSAIC
COMMUNITY LIFESTYLE REALTY

4 Bedrooms, 3 Bathrooms
2,340 SF • 6.44 Acres
MLS #3775199



INFO

1747 Secluded Valley Road
Marshall, NC 28753
4 Bedrooms, 3 Bathrooms
2,340 SF • 6.44 Acres
MLS #3775199

FEATURES

- Built in 2000
- Open floor plan
- Hardwood floors on main
- Lots and lots of natural light and large windows
- Wood-burning fireplace
- Mountain views from living room
- Kitchen with plenty of cabinet and counter space
- Walk-in pantry
- Main-level bedroom also great for office or media room
- Main-level full bathroom
- Upper level has three bedrooms; primary bedroom includes a walk-in closet
- Mountain views from two of the upper-level bedrooms
- Upper-level full bathroom
- Lower-level laundry, flex space, full bathroom, garage, and workshop



Views from Covered Porch

- Tankless hot water heater
- Updated by current owners in 2017
- Wraparound porch includes covered portion and mountain views
- Fruit trees include strawberries, blueberries, raspberries
- Multiple raised garden beds and greenhouse
- Duck coop with electric fence
- Fire pit
- Spacious yard, perfect for garden, pets, and/or kids
- Up-close and long-range views



Open Floor Plan



Welcoming Entry into Living Area



Wood-Burning Fireplace



Dining Area with Large Windows



Kitchen Opens to Dining and Living Areas



Large Kitchen with Plenty of Cabinet and Counter Space



Walk-in Pantry and Full Bathroom off Kitchen



Walk-in Pantry with Plenty of Space



Main-Level Bedroom Converts to Office or Media Room



Large Windows with Lots of Natural Light



Main-Level Full Bathroom



Upstairs is the Primary Bedroom with Walk-in Closet



One of Two Guest Rooms Could Double as an Office



Upstairs Guest Room with Mountain Views



Upstairs Full Bathroom



Laundry on Lower Level Under Stairs



Downstairs Flex Space



Downstairs Full Bathroom



Wooded Setting with Mountain Views



Wraparound Porch Includes a Covered Portion



Raised Garden Beds



Beautiful Home Nestled in the Mountains



Plenty of Parking



Garage Includes Workshop Space



Greenhouse with a View!



Greenhouse Conveys with Property



Yard Is Perfect for Gardening, Pets, and/or Kids



Duck Coop



Warm Up Next to Your Fire Pit on Chilly Evenings



Fruit Trees



Welcome Home to 1747 Secluded Valley!

Natural light and mountain views bathe this 4BD/3BA home in a cozy section of Little Pine in Madison County. Tucked into a setting with close-up and long-range views, you share the area with Sandy Bottom Trail Rides, Blue Heron Whitewater, and Little Pine Creek. The home's open floor plan includes bedroom options on main and upper levels. Spacious kitchen includes plenty of counter/cabinet space and a walk-in pantry. Enjoy flexspace in the lower level with a full bathroom, garage, and workshop. Mountain views from the main level, as well as two upper level bedrooms. Outdoor living includes a spacious yard, fruit trees, blueberries, raspberries, strawberries, raised beds, greenhouse, duck coop with electric fence, fire pit, and wraparound porch. Other features include tankless hot water heater, hardwood floors on main, and a wood-burning fireplace. Current owners lovingly updated this home in 2017 and it shows! The county and HOA each maintain a portion of the road. No short-term rentals allowed.



For more information, please contact:

STEPHANIE CALDWELL

828.231.6959

STEPH@MYMOSAICREALTY.COM

DIRECTIONS

FROM DOWNTOWN: Take I-26W/19-23N to exit 19A (Marshall). After 12.7 miles, take a left onto Little Pine Road (Blue Heron Whitewater). Follow Little Pine for 6.5 miles and take a left onto Secluded Valley Road. Follow Secluded Valley Road for approximately 2 miles and #1747 will be on your left.



1747 SECLUDED VALLEY ROAD

BASEMENT LEVEL: 955 sq. ft, MAIN LEVEL: 985 sq. ft
UPPER LEVEL: 850 sq. ft,
EXCLUDED AREA: GARAGE: 450 sq. ft
TOTAL: 2340 sq. ft

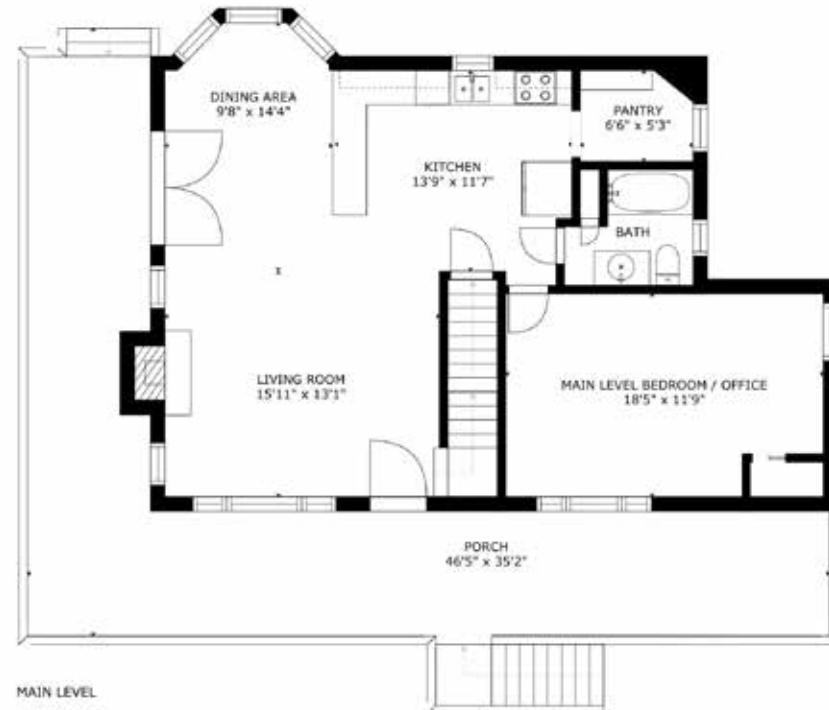
SIZES AND DIMENSIONS ARE APPROXIMATE, ACTUAL MAY VARY.



UPPER LEVEL



BASEMENT LEVEL



MAIN LEVEL