



 VIRTUAL TOUR

## 73 ROBINSON AVENUE

Renovated Brick Ranch-Style Home • South Asheville



**MOSAIC**  
COMMUNITY LIFESTYLE REALTY

3 Bedrooms, 2 Bathrooms  
1,100 SF • 0.25 Acres  
MLS #3648471



## INFO

73 Robinson Avenue, Asheville, NC 28803

3 Bedrooms, 2 Bathrooms

1,100 Square Feet • 0.25 Acres

MLS #3648471

## FEATURES

- Renovated brick ranch-style home in the convenient Shiloh neighborhood of South Asheville
- One-level living in Western North Carolina close to Biltmore Village/London Road Art District, Mission Hospital and minutes to downtown Asheville
- Located on a quiet, dead-end street with convenient interstate I-40 access
- Oversized one-car garage with interior connection to the main home and additional room for extra storage
- Recent improvements include newer windows, addition of central AC, newer gutters, newer garage door, remodeled primary suite bathroom and updated kitchen
- Beautiful hardwood floors with original wood floors under carpet in bedrooms
- Inviting entry with coat closet opens to bright living room with crown molding, oversized sliding glass windows for great natural light and a brick-surround wood-burning fireplace
- Chef's kitchen feature stainless steel oven/range and microwave, tile floors and access to sunny back deck



Updated Ranch Home in South Asheville

- Hallway connects three bedrooms, two full bathrooms and two linen closets
- Primary bedroom with backyard views and ensuite bathroom that includes a tiled walk-in shower
- Versatile third bedroom with neighborhood views perfect for home office
- Sunny back deck ready for grilling and gathering with friends and family
- Spacious gently sloping spacious backyard perfect for kids, pets, gardens, etc
- Laundry conveniently located in garage on main level



Coat Closet at Inviting Entry



Living Room w/Brick-Surround Wood-Burning Fireplace



Chef's Kitchen Features Stainless Steel Oven Range



Lots of Cabinet and Counter Space



Tile Floors and Crown Molding



Dining Area Off of Kitchen with Garage Access



Sliding Glass Doors Open to Spacious Back Deck

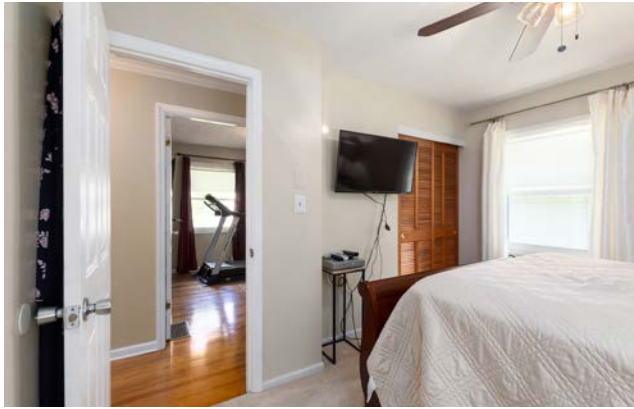


Hallway Connects Three Bedrooms

**73 ROBINSON AVENUE**  
**Renovated Brick Ranch**  
Asheville, NC 28803



Primary Bedroom Features Great Natural Light



Bright Bedrooms



Gorgeous Hardwoods Under Carpet in Primary Bedroom



Renovated Ensuite Bathroom with Tiled Walk-In Shower



Second Bedroom on Main Level



Versatile Third Bedroom Perfect for Home Office



Second Full Bathroom on Main Level



Beautiful Tile Surround in 2nd Full Bathroom

**73 ROBINSON AVENUE**  
**Renovated Brick Ranch**  
Asheville, NC 28803



Sunny Back Deck Perfect for Al Fresco Dining



Lots of Room to Plant and Play



Gently Sloped Back Yard

Renovated one-level 3 bed/2 bath brick home with an oversized single car garage in the Shiloh neighborhood of South Asheville close to Biltmore Village, London Road Art District and Mission Hospital. Minutes to downtown Asheville, this home is located on a quiet, dead-end street. Recent improvements include newer windows, addition of central AC, newer gutters, newer garage door, remodeled primary suite bathroom and updated kitchen. Highlights include a chef's kitchen, gorgeous hardwood floors (hardwood floors under the carpet in bedrooms), ample storage and a sunny back deck perfect for gatherings. Three bedrooms and two full bathrooms on the main level includes a primary bedroom with a remodeled ensuite bathroom. Generous outdoor living includes a large backyard and level front yard. Oversized one-car garage with interior connection to the main house, laundry and plenty of extra storage.



For more information, please contact:

**MIKE FIGURA**

**828.337.8190**

**MIKE@MYMOSAICREALTY.COM**

## DIRECTIONS

From downtown Asheville, take Biltmore Avenue south. Take a left onto Sweeten Creek Road. Drive through Biltmore Village, then under I-40. Take a right onto West Chapel Road. Take a right onto Robinson Avenue. 73 Robinson is on the right. Sign in the yard.