



 VIRTUAL TOUR

11 REYNOLDS PLACE

Exceptional Mid-Century Modern Home • Steps from Beaver Lake



MOSAIC
COMMUNITY LIFESTYLE REALTY

3 Bedrooms, 2.5 Baths
2,600 SF • 0.32 Acres
MLS #3754614

INFO

11 Reynolds Place, Asheville, NC 28804

3 Bedrooms, 2.5 Baths

2600 Square Feet • 0.32 Acres

MLS #3754614

FEATURES

- Exceptional mid-century modern home just steps from Beaver Lake
- Endless curb appeal with mature trees and lush perennials
- Covered front porch to enjoy the beautiful surroundings
- Open and flowing floor plan with spacious rooms and great light
- Living/Dining with hardwood floors and large windows
- Beautifully renovated kitchen with stainless appliances including a gas range
- Lovely kitchen cabinetry provides ample storage
- Vinyl plank flooring in kitchen and family room
- Family room with gas-log fireplace featuring an artisan-made fireplace mantel
- Three spacious bedrooms, all with hardwood flooring
- Primary suite with walk-in closet and attached bath
- Renovated primary bath features a walk-in tile shower
- Lower-level office/additional family room



Walk, Jog, Boat or Fish

- Basement offers tons of storage, half bath and workshop area
- Tandem three-car garage
- Sunny back deck with retractable awning
- Enjoy blooms from Spring through Autumn
- Quiet cul-de-sac location
- Walk, jog, boat or fish at Beaver Lake
- Super convenient to North Asheville shopping and dining
- Minutes to downtown Asheville



Open and Spacious Living



Living Area has Hardwood Floors and Large Windows



Great Natural Light



Kitchen with Granite Counters and Tile Backsplash



Lovely Cabinetry Provides Plenty of Storage



Stainless Appliances Including a Gas Range



Kitchen is Open to Family Room



Family Room with Fireplace and Access to Deck



Gas-Log Fireplace with Artisan-Made Mantel



Wide Hallway Leads to Three Spacious Bedrooms



Primary Suite with Hardwood Flooring & Walk-In Closet



Nicely Renovated Primary Suite Bath with Tile Shower



First Guest Bedroom with Walk-In Closet



Second Guest Bedroom with Hardwood Flooring



Spacious Hall Bathroom with Great Storage



Lower Level Office or Additional Family Room



Laundry Area in Office



Convenient Half-Bath in Basement



Large Garage, Workshop, Storage



Quiet Cul-de-Sac Location with Endless Curb Appeal



Mature Trees and Lush Landscaping



Gorgeous Landscaping Greets You



Three-Car Tandem Garage and Plenty of Parking



Enjoy Nature from the Covered Front Porch



Sunny Back Deck is Surrounded by Greenery



Instant Shade with Retractable Awning



Gardener's Paradise



Blooms for Every Season



Mature Trees and Lush Beaver Lake Walking Trail



Nature at Your Doorstep



Hit the Trail at Beaver Lake

Exceptional mid-century modern brick home nestled among mature trees and lush landscaping, just steps from Beaver Lake. Impressive open floor plan with spacious rooms featuring hardwood flooring and large windows. Beautifully renovated kitchen with a stainless gas range, granite countertops and lovely cabinetry. Family room with a gas-log fireplace and easy access to the sunny back deck. A wide hallway leads to three amply sized bedrooms all with hardwood flooring. The roomy primary suite includes a walk-in closet fitted with an Elfa organizational system and a renovated bath with walk-in tile shower. Lower-level includes an office/ additional family room, tons of storage, half bath and a workshop. Tandem three-car garage. Newer windows and gas furnace, custom shades, retractable deck awning. Wonderful outdoor spaces to take in the beautiful surroundings! Enjoy walks around Beaver Lake and the variety of shopping and dining on Merrimon Avenue. Minutes to downtown Asheville.



For more information, please contact:

CAROL MARIN

828.545.2712

CAROL@MYMOSAICREALTY.COM

DIRECTIONS

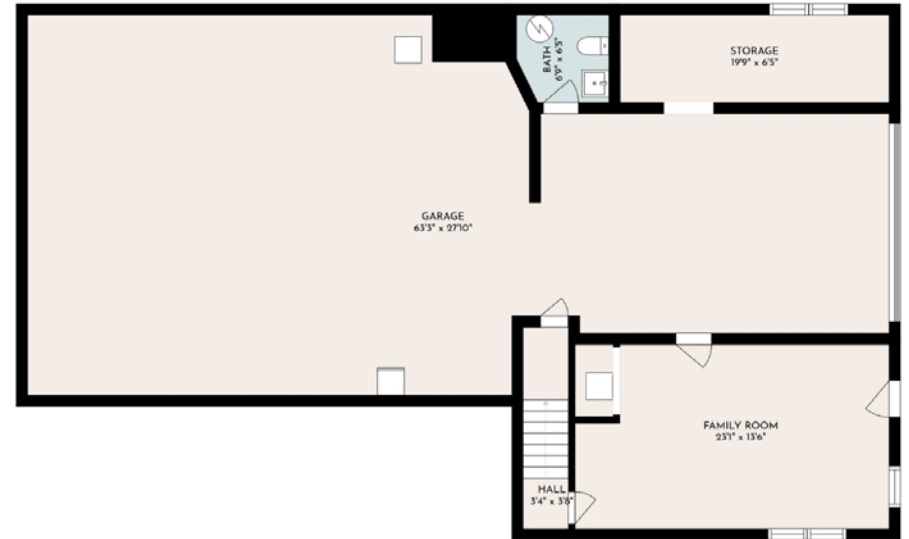
From downtown Asheville go north on Merrimon Avenue to left on Lake Shore Drive. Go .7 of a mile and turn left on Reynolds Place opposite Beaver Lake. 4th house on the right, in cul-de sac.



11 REYNOLDS PLACE



FIRST FLOOR
2203.4 SF



FINISHED BASEMENT
396.1 SF

Heated Living Space

First Floor - 2203.4 sf

Finished Basement - 396.1 sf

Total - 2600 sf (rounded)