



# 38 REESE ROAD

Beautifully Renovated Ranch Home • Haw Creek

 VIRTUAL TOUR



**MOSAIC**  
COMMUNITY LIFESTYLE REALTY

4 Bedrooms, 2 Bathrooms  
1,647 SF • 0.48 Acre  
MLS #3792956



## INFO

38 Reese Road, Asheville, NC 28805


4 Bedrooms, 2 Bathrooms

1,647 Square Feet

(Plus Screened Porch: 266 SF; Laundry/Utility: 110 SF)

0.48 Acre • MLS #3792956

## FEATURES

- Beautifully renovated ranch home in the popular and convenient Haw Creek neighborhood
  - Hike from your house to the Mountains-to-Sea Trail and Blue Ridge Parkway via the neighborhood connector
  - Easy access to East Asheville amenities and within 10 minutes of downtown Asheville
  - Close to Evergreen Charter School, East Asheville Recreation Club (Pool), Penny Cup Coffee, Creekside Tavern, Whole Foods, VA Hospital, the Blue Ridge Parkway, and more
  - Quiet street with great neighbors
  - One-level Western North Carolina living at its best
  - Major renovations in 2017 include a new roof, furnace, air conditioner, hot water heater, renovated kitchen and bathrooms, replacement windows, privacy fence, light fixtures, paint, and more
  - Original wood floors, crown molding, and built-ins throughout most of the home
  - Split-bedroom plan for maximum privacy
- 
- Raised Back Yard for Possible ADU (buyer to confirm setback requirements)
- Inviting entry opens to bright living room with large picture window and oversized doorway connecting with kitchen/dining
  - Renovated kitchen features butcher block countertops, stainless steel appliances, farmer's sink, a five-burner gas range/oven, and lots of cabinet and counter space
  - Dining area has modern pendant light and space for a large table
  - Primary bedroom features beautiful parquet floors, a built-in armoire, sliding barn door, and full ensuite bathroom that includes a walk-in tiled shower and luxury vinyl flooring

## FEATURES (CONTINUED)

- Hallway connects three bedrooms, full bathroom, and linen closet
- Second full bathroom with granite counters, slate-tile floors, a tiled shower with original hardware, and a linen closet
- Bedrooms with private views
- Laundry/utility room with plenty of storage/shelving
- Fresh-air screened porch with ceiling fan is perfect for intimate gatherings with friends and family
- Hard-to-find large and usable yard in the City of Asheville with close to half an acre of flat and gently sloping land
- Gardener's paradise with a large solar window perfect for growing annual and perennial plants
- Edible landscape includes local and native perennials, a variety of herbs, cherry and fig trees, blueberries, goumi berries, pawpaws, a banana tree and more
- Possibility to add accessory dwelling unit in the spacious backyard
- Original brick grill could be restored for backyard barbecues
- Newer privacy fence and a "green" privacy screen using quick-growing evergreens



Open-Air Screened Porch for Afternoon Tea



Al Fresco Dining Awaits



Laundry/Utility Room with Plenty of Storage



Inviting Entry Welcomes You Home



Sun-Filled Living Room with Large Picture Window



Lots of Space for Entertaining



Spacious Living Room



Original Interior Brick Wall Brings Warmth to the Room



Wide Doorway Connects Living Room/Kitchen/Dining



Dining Area off of the Kitchen



Porch Access from the Kitchen

**38 REESE ROAD**  
Renovated Ranch Home in Haw Creek  
Asheville, NC 28805



Updated Kitchen • Butcher Block Counters, Farmer's Sink



Stainless Steel Appliances • Ample Cabinet Space



Primary Suite Features Stunning Parquet Floors



Gorgeous Built-in Armoire



Ensuite Primary Bathroom



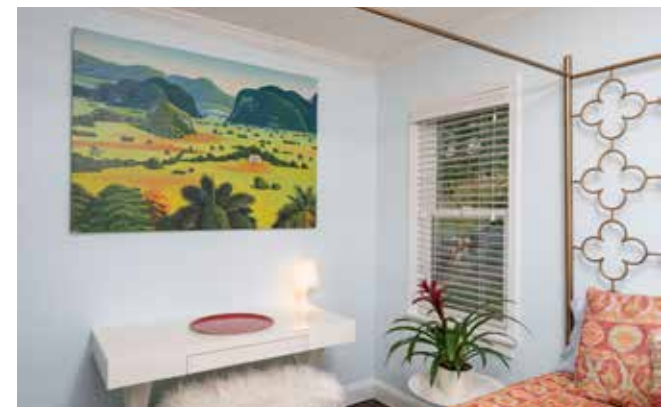
Walk-in Tiled Shower



Hallway Joins Three Bedrooms, Bathroom, Linen Closet



Bedroom with Private View



Crown Molding and Fresh Interior Paint



Bedroom with Space for Desk



Main-Level Bedroom, Perfect for Home Office



Second Bath Is a Mix of Modern and Original Fixtures



Tiled Shower with Original Hardware and a Linen Closet



Open-Air Screened Porch for Afternoon Tea



Al Fresco Dining Awaits



Gentle Slope Connects Lower and Upper Back Yard



Delightful Landscaping Includes Fruit Trees, Edible Shrubs

**38 REESE ROAD**  
Renovated Ranch Home in Haw Creek  
Asheville, NC 28805



Lovely Gathering Space Among Established Organic Garden Beds



Level Outdoor Space Gets Great Sun



Fresh Exterior Paint and a 30-Year Roof



Stacked Stone Plant Beds Adorn the Front of the Home



Great Curb Appeal

Beautifully renovated modern ranch home in Haw Creek with a large sunny yard perfect for gardening and excellent proximity to the best that Asheville has to offer. Hike from your house to the Mountains-to-Sea Trail or hop in your car and be downtown or on the Blue Ridge Parkway in minutes. Major updates in 2017 include a new roof, gas furnace, air conditioning, hot water heater, renovated kitchen and bathrooms, replacement windows, privacy fence, updated fixtures, paint, and more. Original wood floors, crown molding and built-ins. Chef's kitchen features butcher block countertops, stainless appliances, farmer's sink, five-burner gas range and lots of cabinets and counters. Relax with friends or enjoy dinner on the spacious screened porch that opens to the gorgeous and private half-acre yard. Flat and gently sloping yard boasts established perennials and edible landscaping. Space for an accessory dwelling unit. Too many details to name!

YouTube

VIRTUAL  
TOUR



For more information, please contact:

**MIKE FIGURA**

**828.337.8190**

**MIKE@MYMOSAICREALTY.COM**

## DIRECTIONS

FROM DOWNTOWN ASHEVILLE: Take I-240 E. Take exit 7 and turn left onto East Tunnel Road. Turn left onto Crockett Avenue. Turn right onto New Haw Creek Road. Take a left on Reese Road. 38 Reese Road is on the right. Sign in the yard.



## 38 REESE ROAD



SIZES AND DIMENSIONS ARE APPROXIMATE, ACTUAL MAY VARY.