



 **VIRTUAL TOUR**

109 OVERLOOK ROAD

Renovated Mountain Contemporary Home in South Asheville



MOSAIC
COMMUNITY LIFESTYLE REALTY

3 Bedrooms + Bonus Room, 2 Full + 2 Half Baths
3,461 Square Feet • 0.64 Acre
MLS #3855281

INFO

109 Overlook Road, Asheville, NC 28803

3 Bedrooms + Bonus Room, 2 Full + 2 Half Baths

3,461 Square Feet (1802 main + 954 second + 705 basement)

0.64 Acre • MLS #3855281

FEATURES

- Idyllic positioning well off the road allows a tranquil connection to nature
- Stunning mountain contemporary home in popular South Asheville with many updates
- Boasting county taxes with city amenities, and outside of the City's zoning, this home offers excellent potential for a whole-house vacation rental
- Minutes to so many offerings, this home is in the heart of South Asheville with close proximity to Biltmore Park's dining, shopping and entertainment, plus Lake Julian and the Blue Ridge Parkway
- Welcoming entry with full-light front door, parquet floors, and coat closet
- Renovations include a new metal roof, fresh interior and exterior paint, oversized gutters, and new light fixtures throughout the home
- Completely remodeled kitchen features quartz countertops, stainless steel appliances, gorgeous tile backsplash, soft-close drawers, a five-burner gas stove, a breakfast bar island, and lots of extra under-counter storage
- Cozy living room with back balcony access — back balcony is perfect for peaceful moments among the trees
- Entrance from the two-car carport, side patio access, powder room, and second coat closet off of kitchen
- Re-decked sunny patio/lounge deck surrounded by mature trees is ready for gatherings and al fresco dining
- Dining room with original built-in corner cabinet
- Bright sitting room with stone-surround gas fireplace, built-in display shelves, extra "cubby" storage and balcony access



Back Balcony Sits Among Mature Trees

- Mid-century-inspired floating stairs connect main level with upstairs and finished basement
- Three bedrooms and two full bathrooms on second level
- Primary suite feature wooded views, walk-in closet, more built-in closet space + underneath storage drawers, and an ensuite bathroom that includes a dual-flush toilet, walk-in shower, and built-in linen shelves
- Spacious bedroom with two closets, desk nook, and private views
- Extra closet space at second-level landing
- Finished basement features a large bonus room (not a bedroom because of 3 BR septic permit), powder room, sitting area, sunroom (unheated) and floor-to-ceiling windows bringing nature indoors
- Spacious utility room with built-in storage/hobby shelves
- Two-car carport with covered, main-level access
- Over 700 SF of deck for al fresco dining, entertaining, and gathering



Full-Light Front Door, Beautiful Parquet Floors at Entry



Cozy Living Room



Back Balcony Access from the Living Room



Great Space for Entertaining



Great Flow through the Home



Dining Room, Ready for Your Next Gathering



Kitchen Features Quartz Countertops and Tile Backsplash



Stunning Sputnik Hovers above the Island Breakfast Bar



Lots of Cabinet and Counter Space



Carport and Side Patio Access from the Kitchen



Bright Sitting Room with Built-in Display Shelves ...



... and a Stone-Accent Gas Fireplace



Mid-Century Inspired Design with Floating Stairs



Second-Level Hallway Connects Three Bedrooms



Primary Bedroom Features Wooded Views ...



... Built-in Closet and Storage Drawers ...



... and a Remodeled Ensuite Full Bathroom



Second Upstairs Bedroom with Private Views ...



... plus Two Closets and a Desk Nook



Third Bedroom Upstairs ...



... with Space for a Small Desk



Second Upstairs Full Bathroom



Bonus Area in Basement



Sitting Room • Ready for a Good Book



Sunroom (Unheated) with Floor-to-Ceiling Windows



Spacious Basement Bonus Room Overlooks Yard



Powder Room in Basement



Abundance of Outdoor Space • Side Patio Has Lots of Room for Gatherings



Re-Decked Patio Provides the Perfect Spot to Relax



Have Your Morning Coffee with a Side of Birdsong ...



... on the Covered Front Porch



Storage Shed for Tools and Toys

109 OVERLOOK ROAD

Renovated Mountain Contemporary Home

Asheville, NC 28803



Plenty of Parking, Including a Two-Car Carport

Stunning mountain contemporary home in popular South Asheville with many updates in popular South Asheville. Set in an idyllic natural setting with excellent proximity to the best that Asheville has to offer. Mere minutes to downtown, the Blue Ridge Parkway and Biltmore Park, this home is in the county on the edge of city limits, making it perfect potential for a whole-house vacation rental. Renovations include a fully remodeled kitchen with quartz counters and stainless appliances, new metal roof, fresh interior and exterior paint, oversized gutters, and new light fixtures. Designed for entertaining, the main level features the gleaming kitchen, bright dining room, living with back balcony access, and a cozy sitting room with a gas fireplace. Three bedrooms and two full bathrooms on second level include the primary suite with wooded views and ensuite bathroom. The finished basement features a large bonus room (not a bedroom because of 3 BR septic permit), powder room, second bonus room, sitting area, and a sunroom surrounded by nature. Two-car carport with covered main-level access.



For more information, please contact:

MIKE FIGURA

828.337.8190

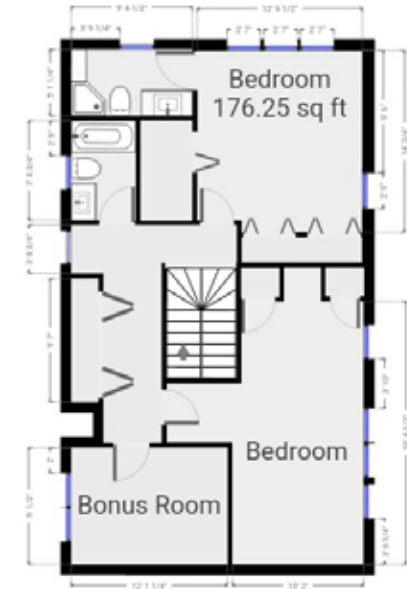
MIKE@MYMOSAICREALTY.COM

DIRECTIONS

FROM DOWNTOWN ASHEVILLE: Follow Biltmore Avenue south. Biltmore Avenue becomes Hendersonville Road at Biltmore Village. Take Hendersonville Road to Overlook Road. Turn right onto Overlook Road. 109 Overlook Road is on the right. Sign in the yard.



**Upper Floor
Approximate
954 HLA SQFT**



**Lower Floor
Approximate
705 HLA SQFT
& 353 NHLA SQFT**

